

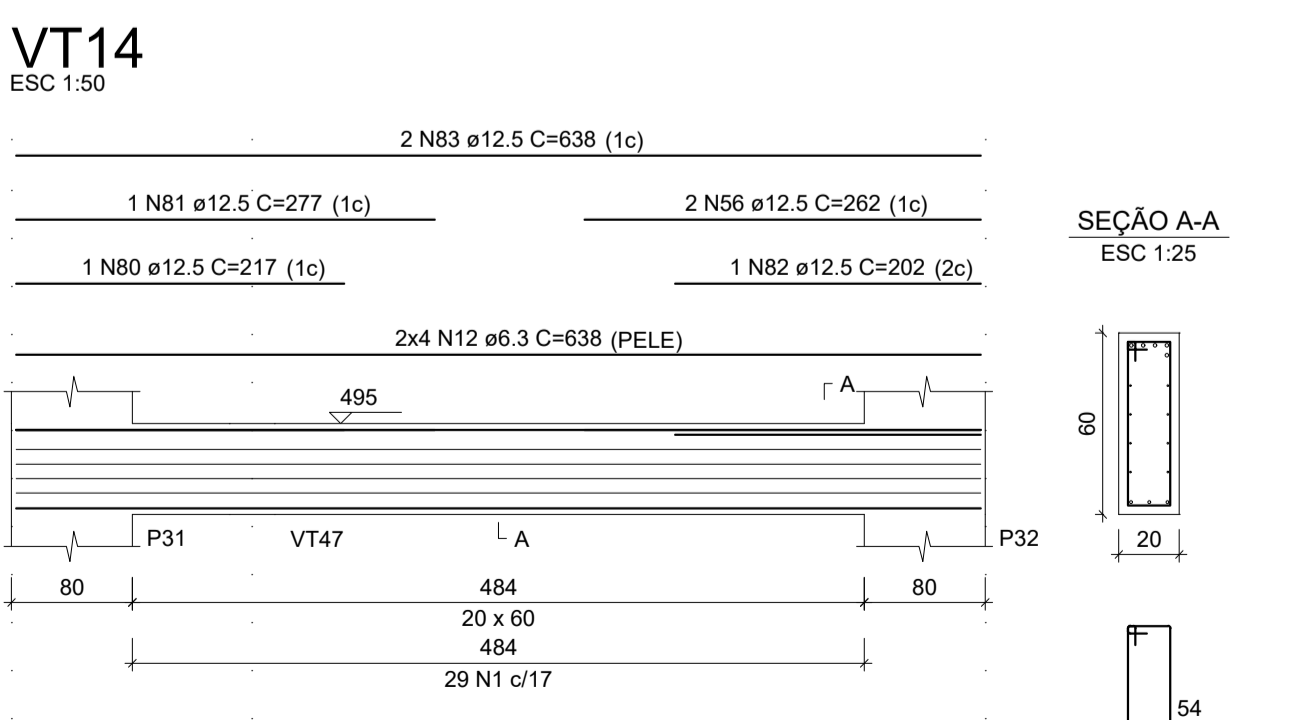
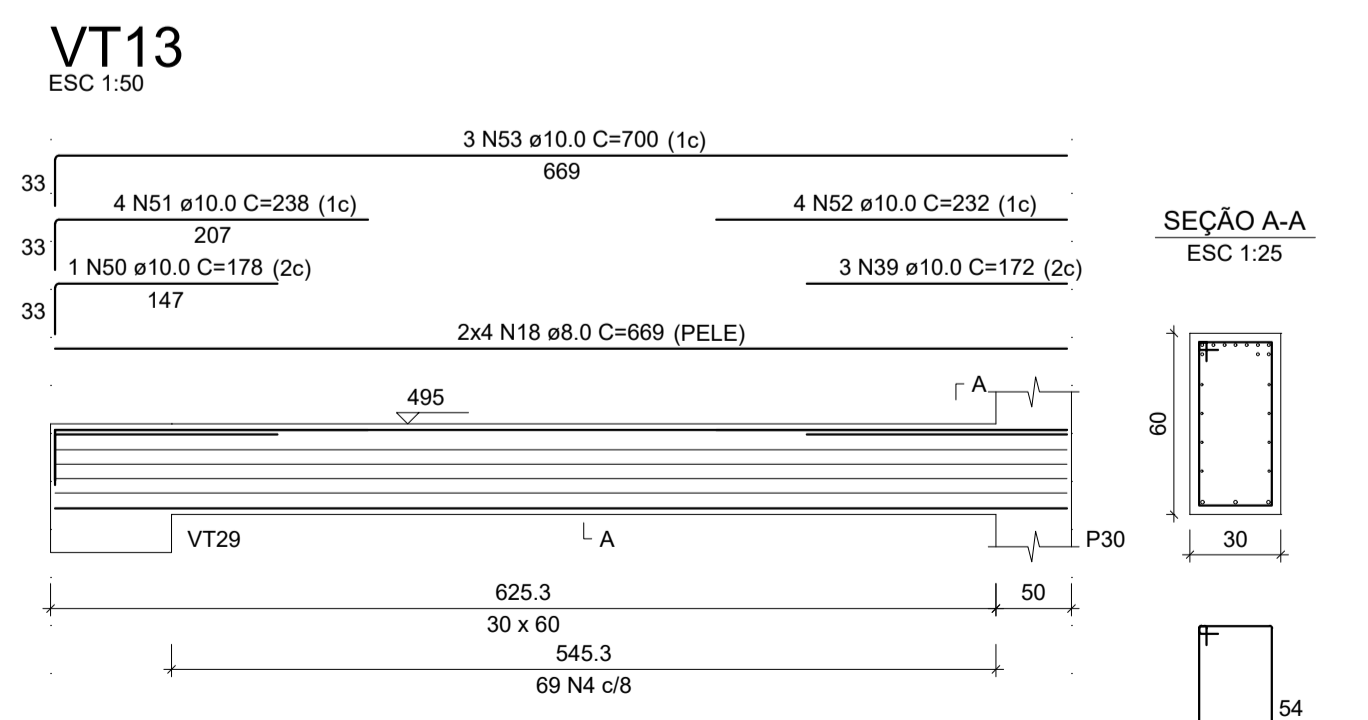
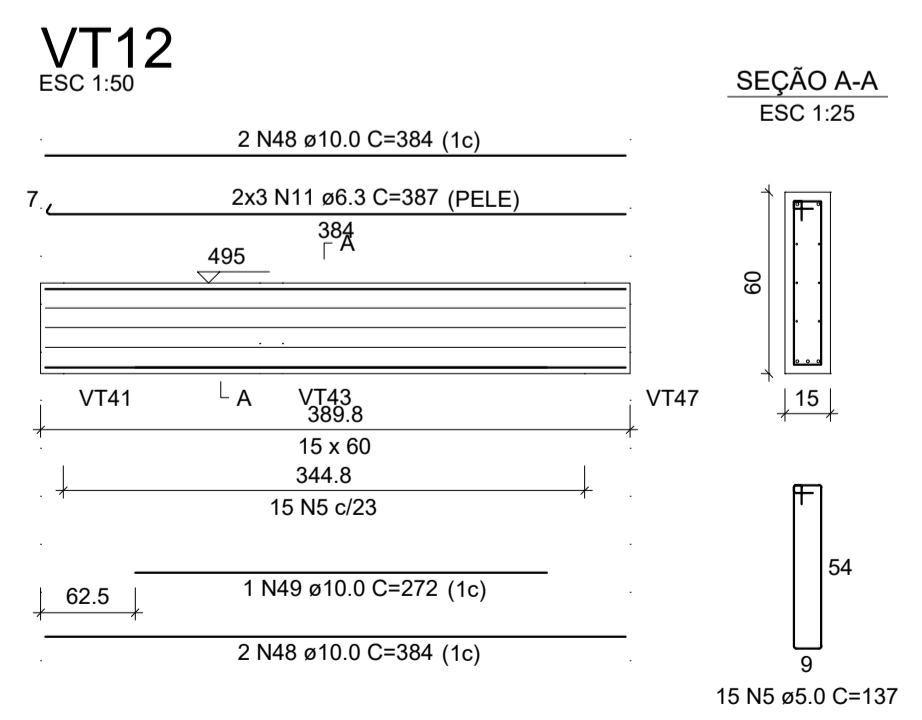
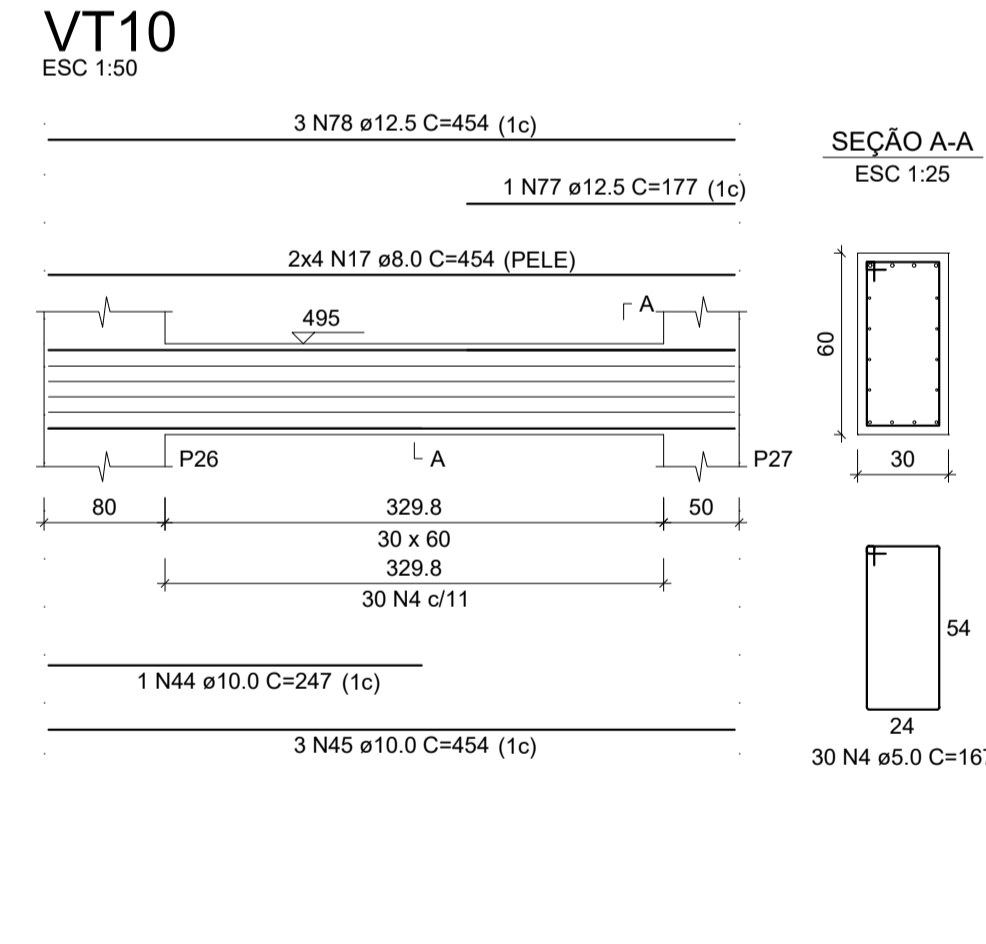
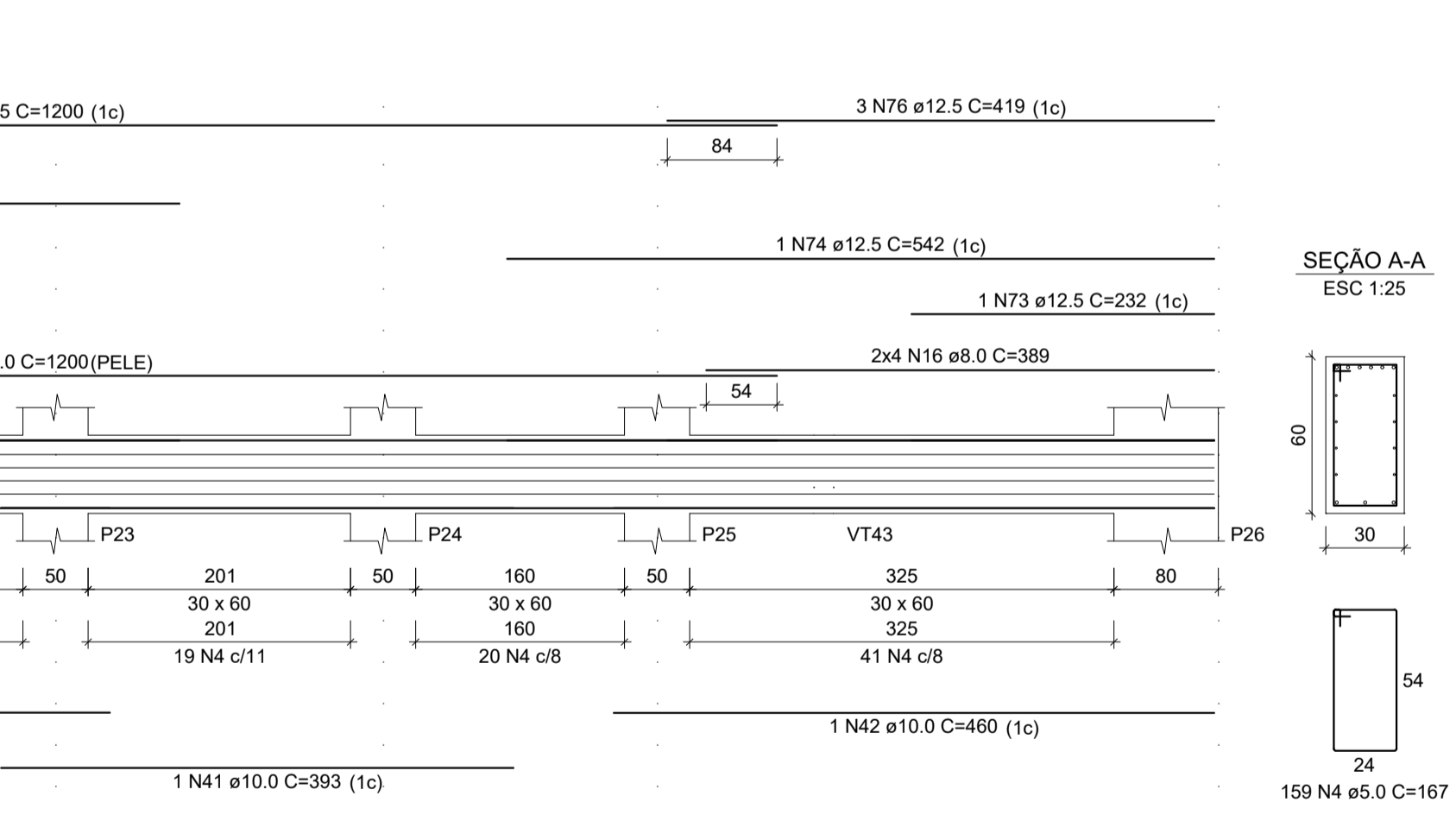
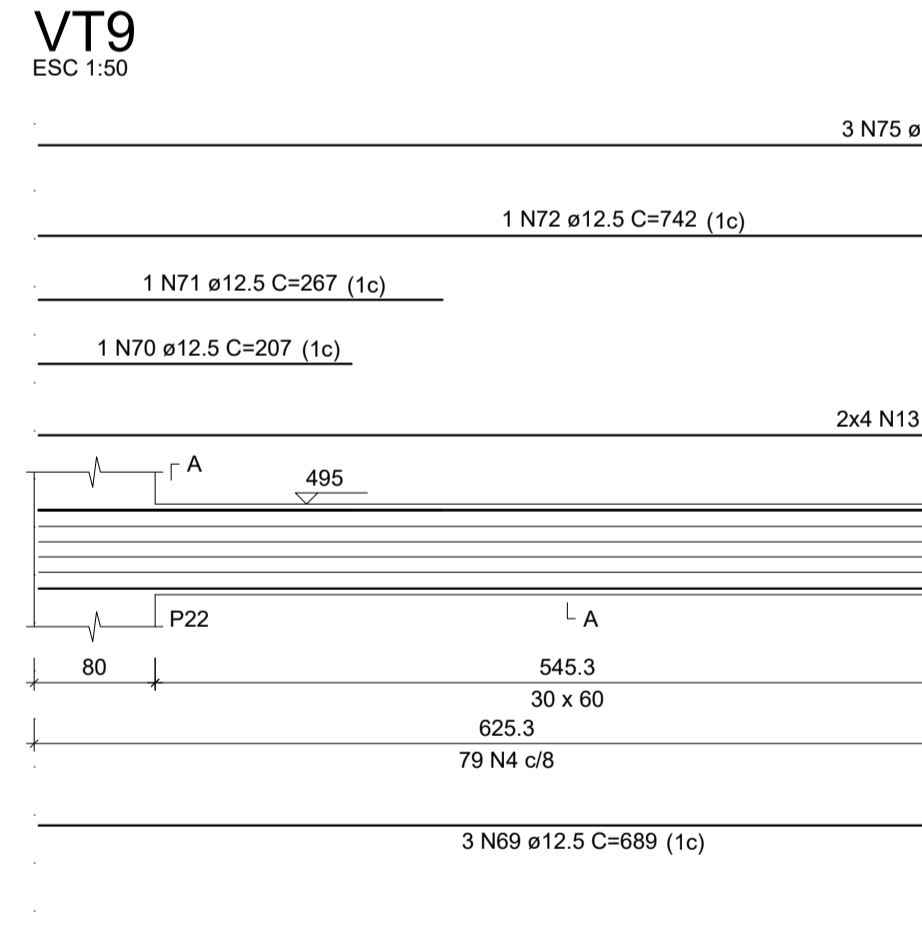
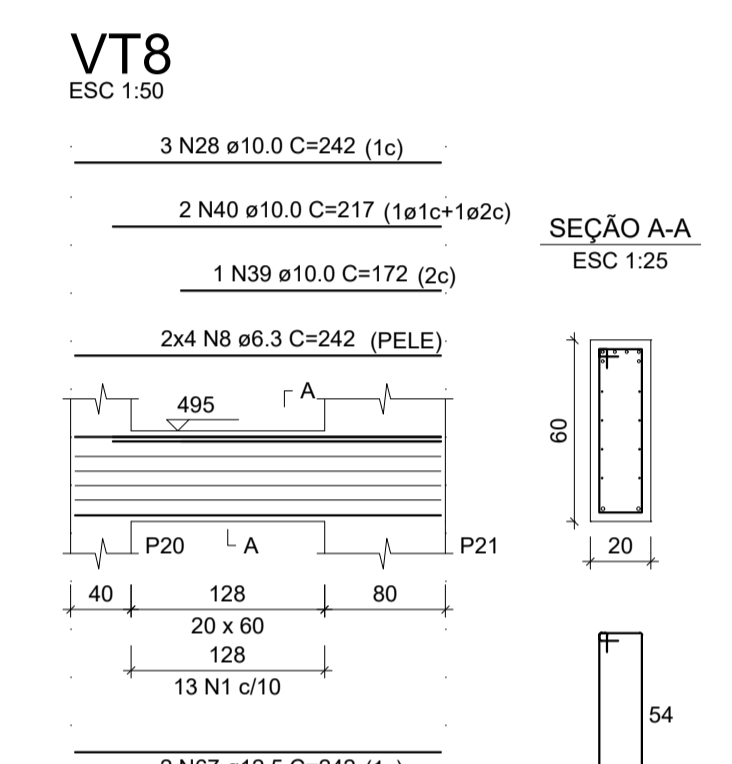
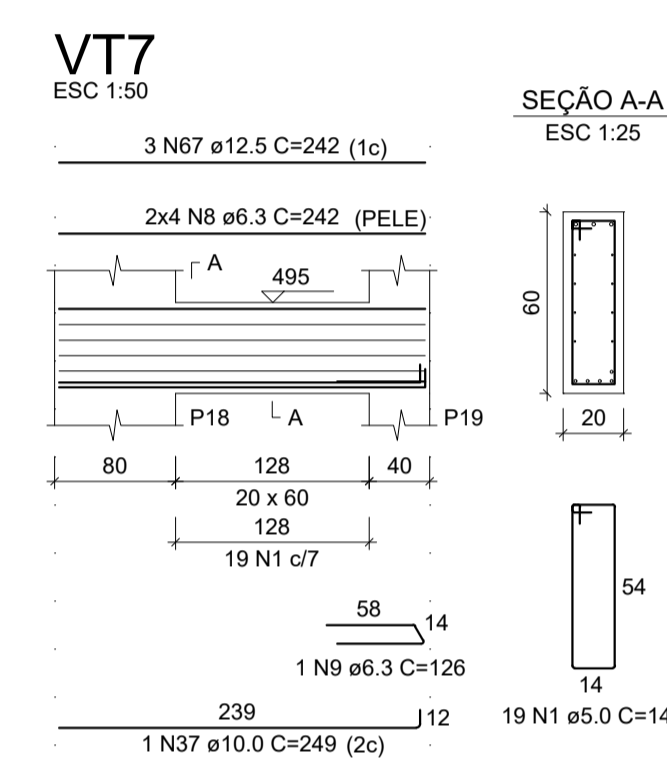
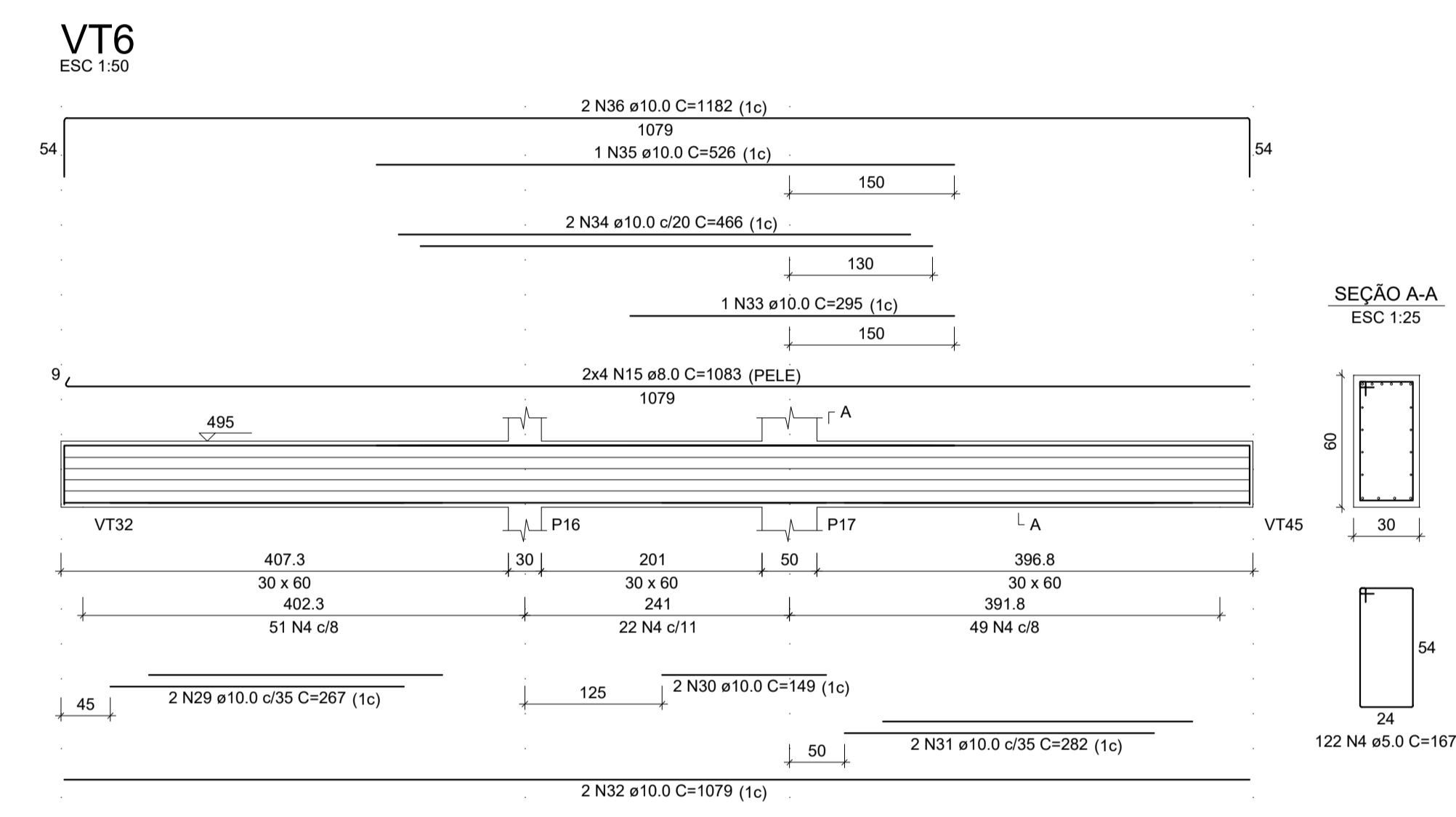
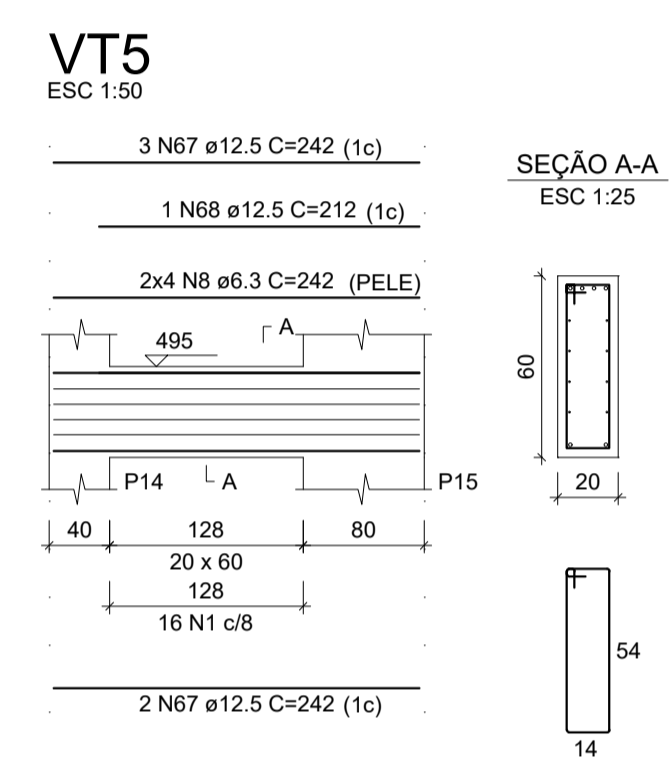
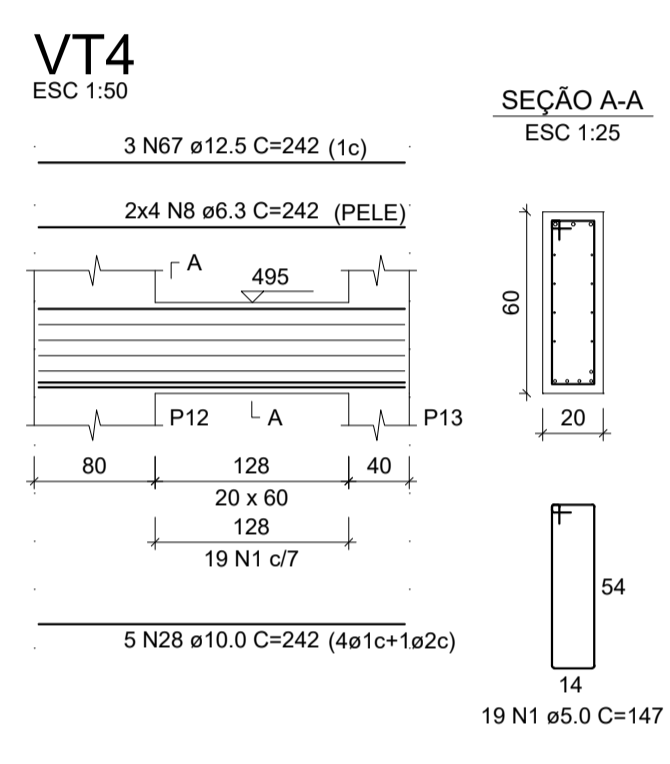
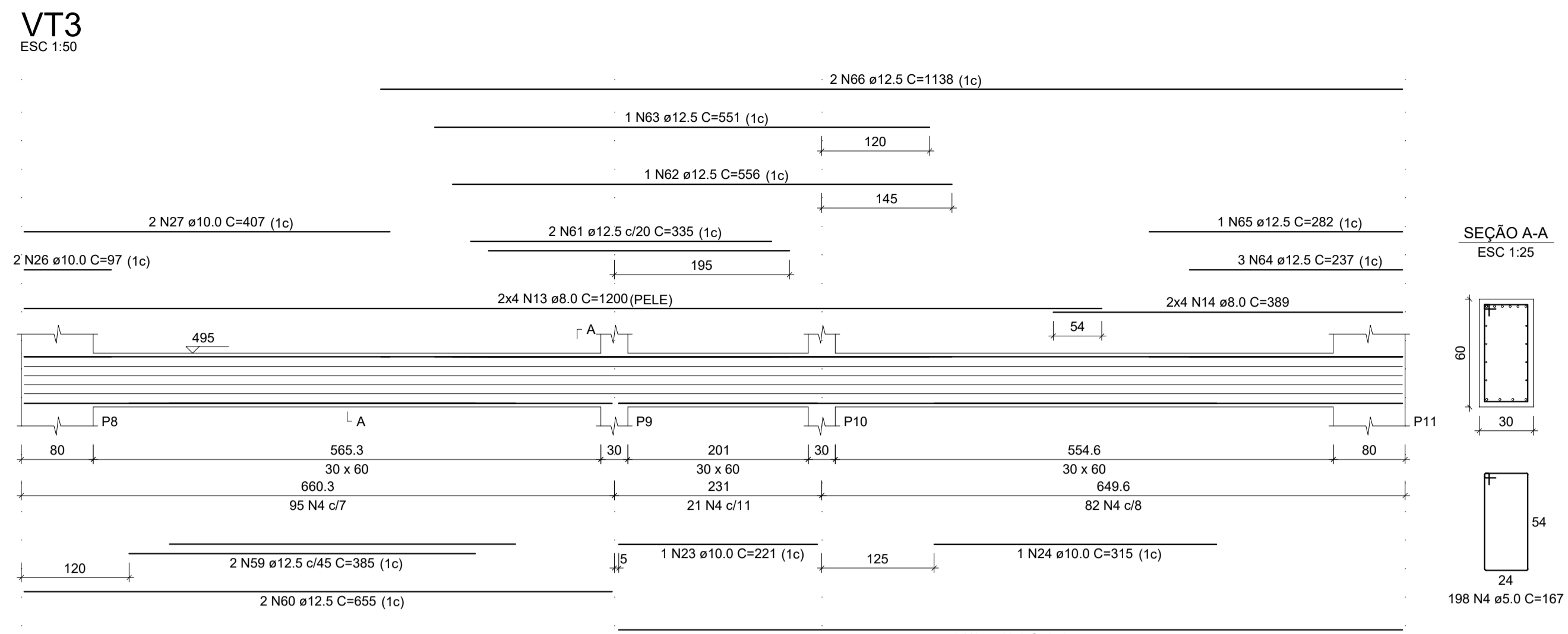
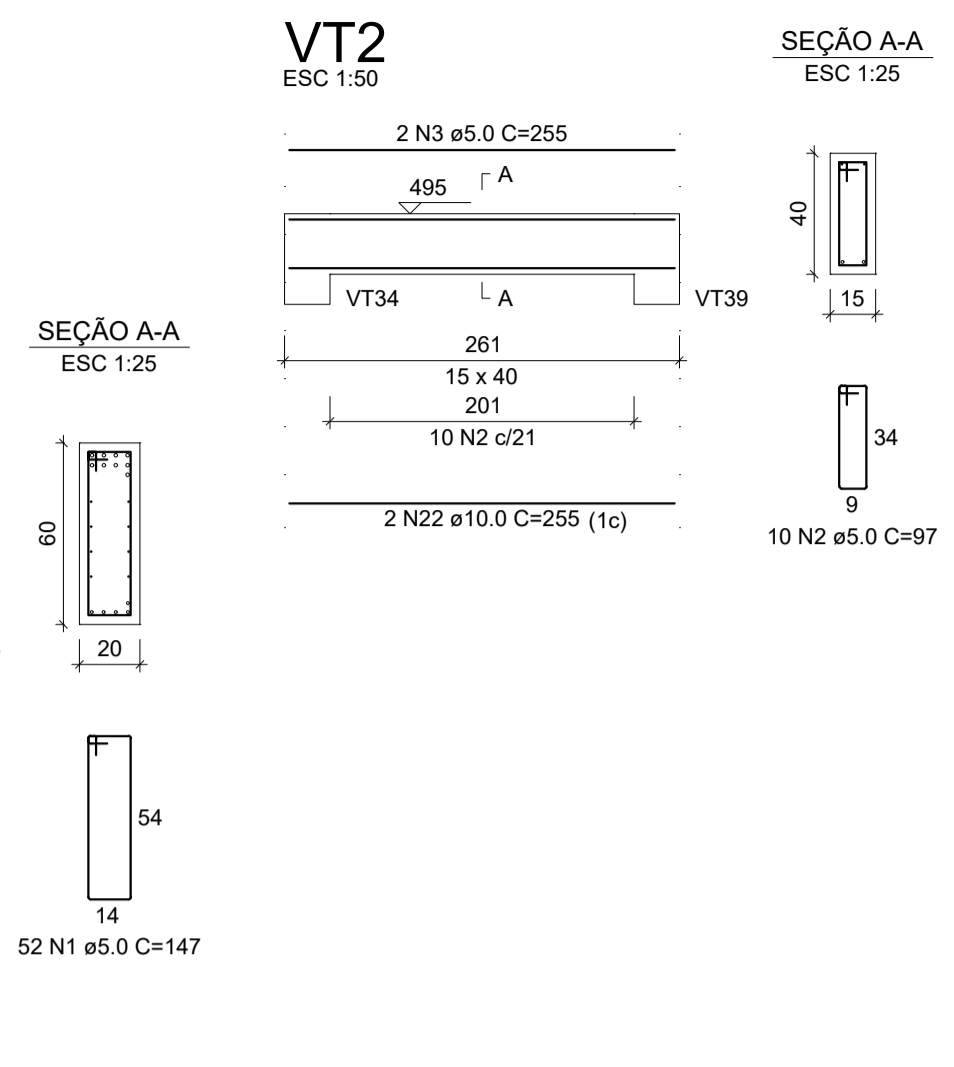
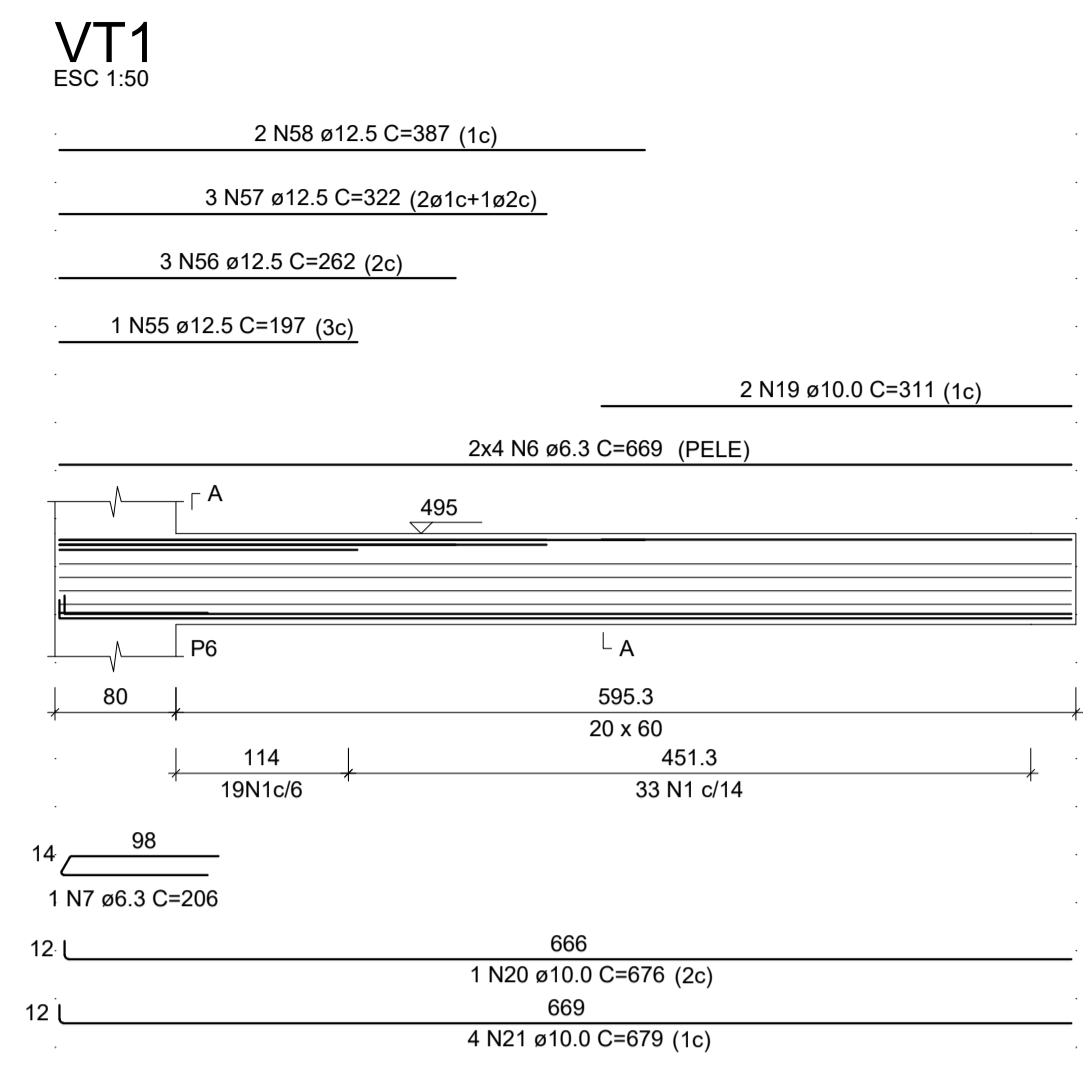
RELAÇÃO DO AÇO

AÇO	N	DIAM (mm)	QUANT	C.UNIT (cm)	C.TOTAL (cm)
VT1					21756
VT4					970
VT7					255
VT10					96526
VT13					3288
VT11					5352
VT12					206
VT14					7744
VT15					126
VT16					219
VT17					387
VT18					5104
VT19					1200
VT20					3112
VT21					8664
VT22					3112
VT23					454
VT24					669
VT25					5352
VT26					676
VT27					2716
VT28					510
VT29					122
VT30					676
VT31					315
VT32					873
VT33					2619
VT34					194
VT35					814
VT36					242
VT37					1936
VT38					534
VT39					298
VT40					149
VT41					282
VT42					564
VT43					2158
VT44					655
VT45					932
VT46					526
VT47					2364
VT48					249
VT49					1008
VT50					252
VT51					888
VT52					3112
VT53					438
VT54					219
VT55					458
VT56					1536
VT57					272
VT58					178
VT59					952
VT60					928
VT61					2100
VT62					638
VT63					1914
VT64					197
VT65					282
VT66					1310
VT67					966
VT68					774
VT69					385
VT70					770
VT71					1310
VT72					655
VT73					335
VT74					670
VT75					556
VT76					551
VT77					711
VT78					711
VT79					282
VT80					2276
VT81					3146
VT82					212
VT83					2067
VT84					207
VT85					267
VT86					742
VT87					232
VT88					542
VT89					3600
VT90					1257
VT91					177
VT92					1362
VT93					2007
VT94					217
VT95					277
VT96					202
VT97					638
VT98					1276

RESUMO DO AÇO

AÇO	DIAM (mm)	C.TOTAL (m)	PESO + 10% (kg)
CA50	6.3	221.7	59.7
CA50	8.0	430.7	187
CA50	10.0	347	235.3
CA50	12.5	281.6	288.4
CA50	5.0	1230.5	208.6
<b>PESO TOTAL</b>			<b>780.4</b>
CA50			780.4
CA60			208.6

Volume de concreto (C-30) = 10.94 m³  
 Área de forma = 82.51 m²



**CONSTRUTORA STONE**  
 Tudo pelo gol do cliente!

**CONSTRUTORA STONE** (CNPJ: 05.041.063/0001-11)

OBRA: NÚCLEO INFANTIL CANTINHO DO CÉU

ÁREA EXISTENTE: 0,00 m²

ÁREA A CONSTRUIR: 1.199,17 m²

LOCAL: BOM JESUS DO AMPARO - MG

EQUIPE TÉCNICA: CLAUDIONOR RODRIGUES (CREA-MG 165.439/0)

PROPRIETÁRIO: PREFEITURA MUNICIPAL DE BOM JESUS DO AMPARO-MG (CNPJ: 18.317.693/0001-06)

RESP. TÉCNICO - ENGENHEIRO CIVIL: CLAUDIONOR RODRIGUES (STONE) CREA-MG 347/119

CONTEÚDO: VIGAS TÉRREO

PROJETO: PROJETO ESTRUTURAL

ESCALA: INDICADA

DESENHISTA: STONE

DATA: FEV/2023

FOLHA: 33/66

DIREITOS AUTORAIS RESERVADOS. PROIBIDA A REPRODUÇÃO TOTAL OU PARCIAL.