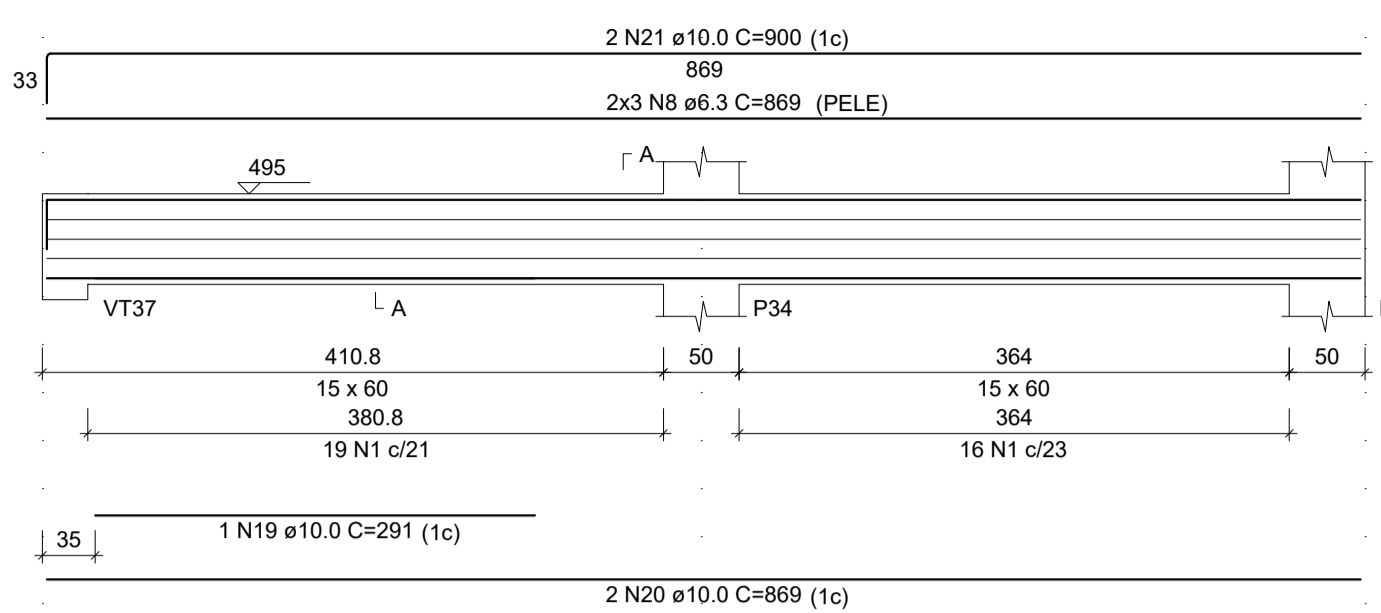


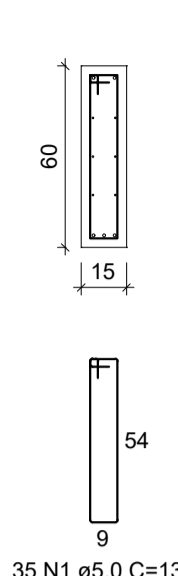
VT15

ESC 1:50



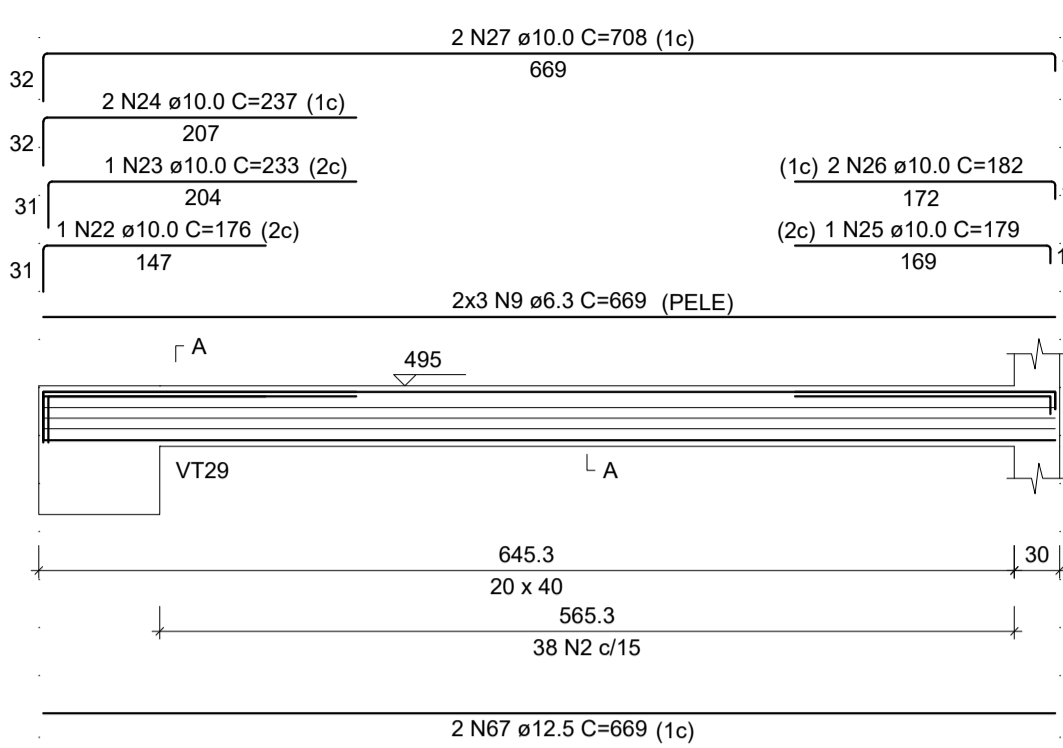
SEÇÃO A-A

ESC 1:25



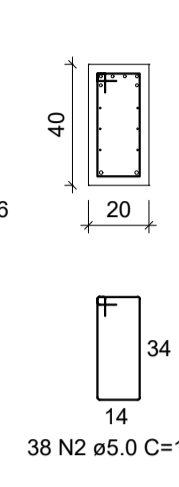
VT16

ESC 1:50



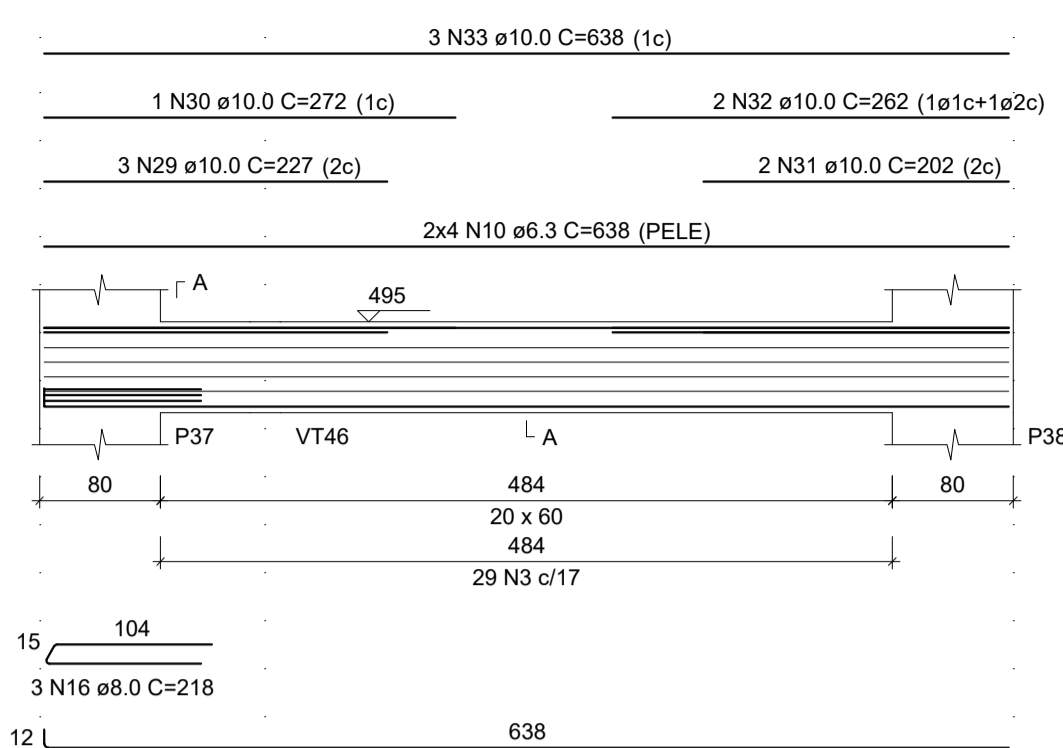
SEÇÃO A-A

ESC 1:25



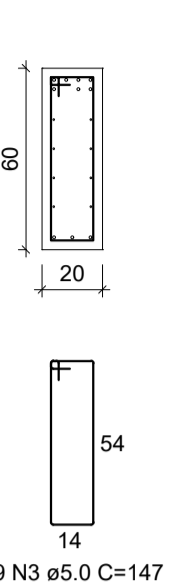
VT17

ESC 1:50



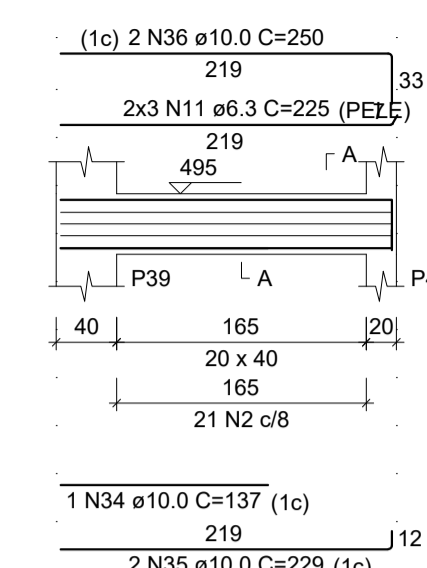
SEÇÃO A-A

ESC 1:25



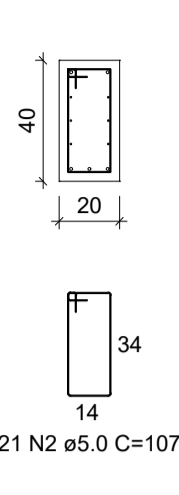
VT18

ESC 1:50



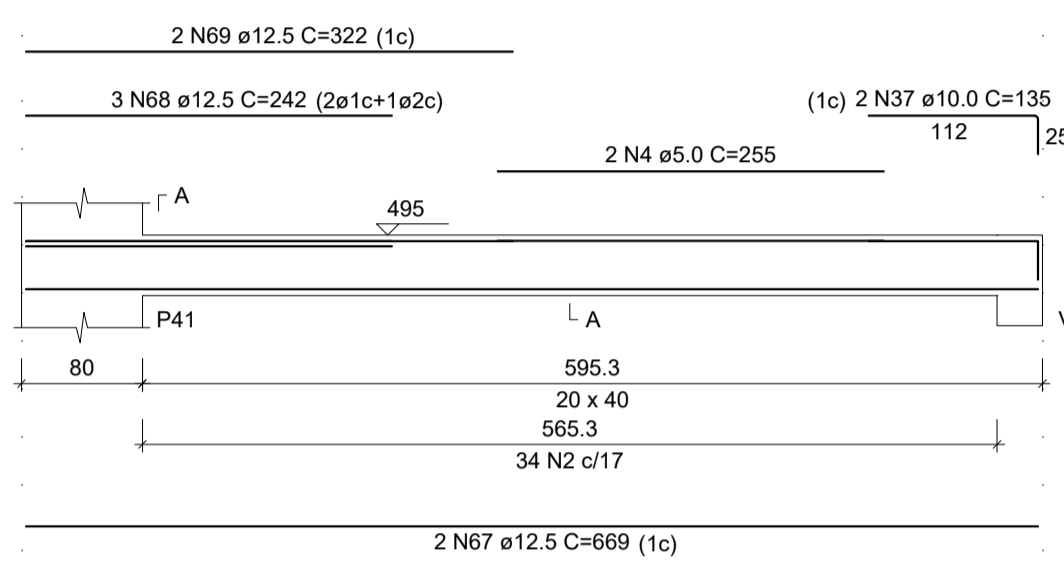
SEÇÃO A-A

ESC 1:25



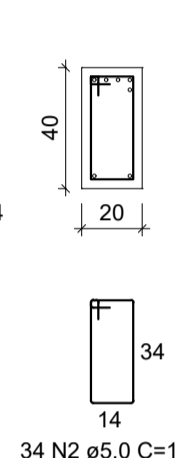
VT19

ESC 1:50



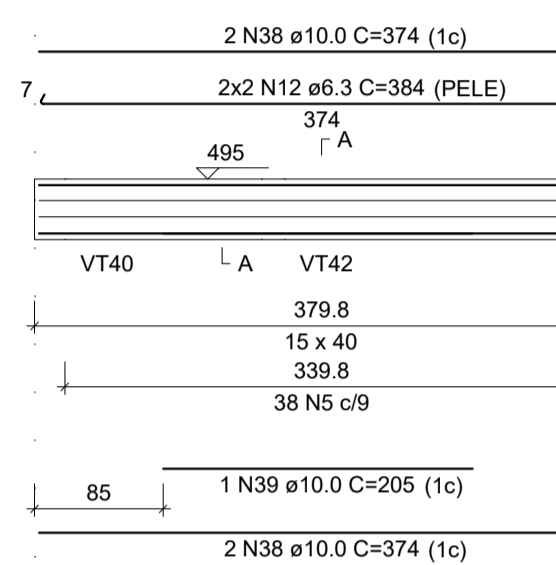
SEÇÃO A-A

ESC 1:25



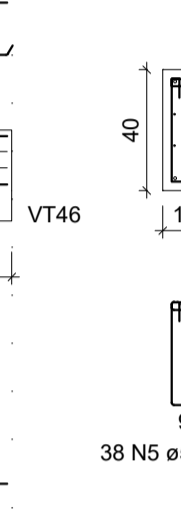
VT20

ESC 1:50



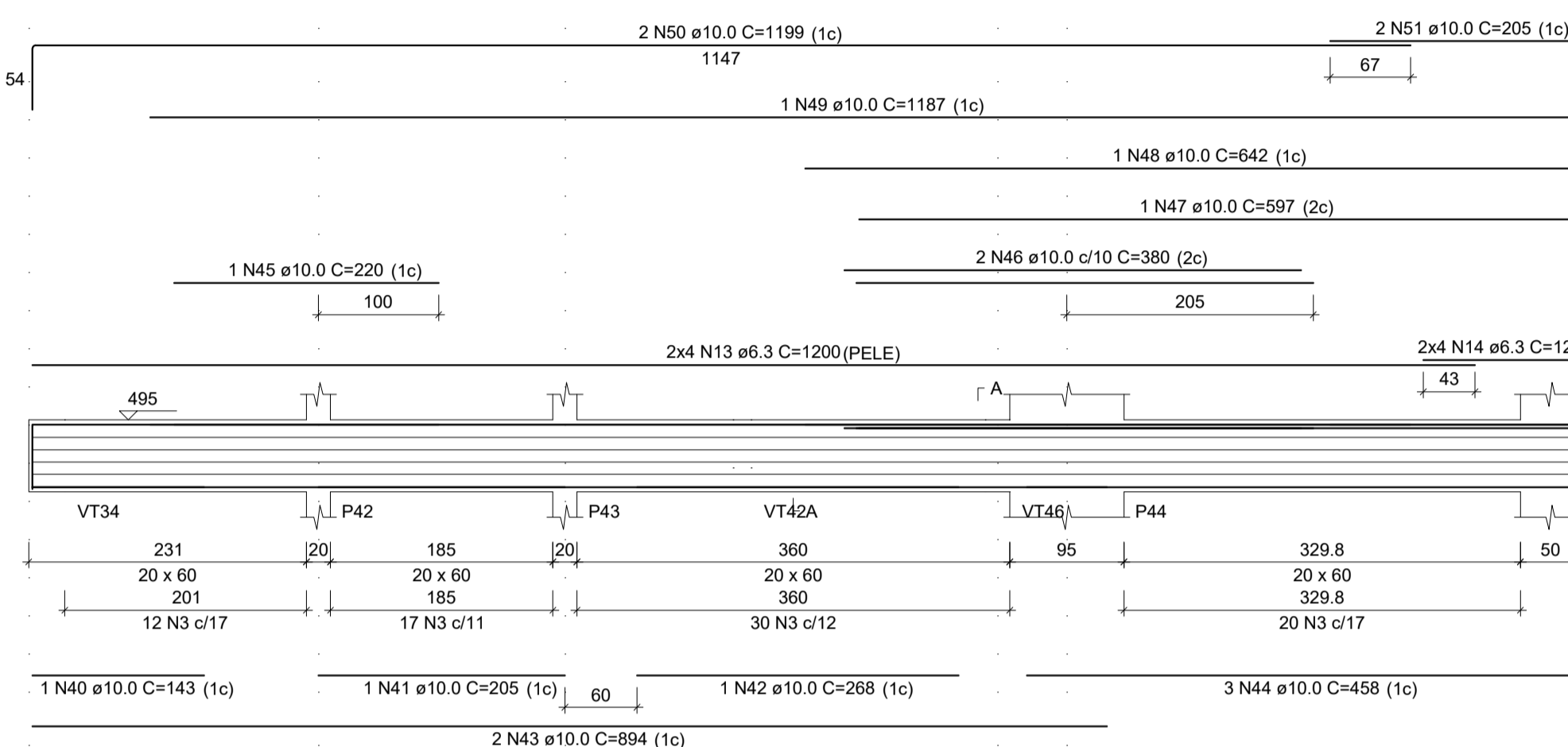
SEÇÃO A-A

ESC 1:25



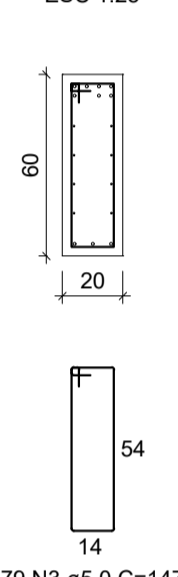
VT21

ESC 1:50



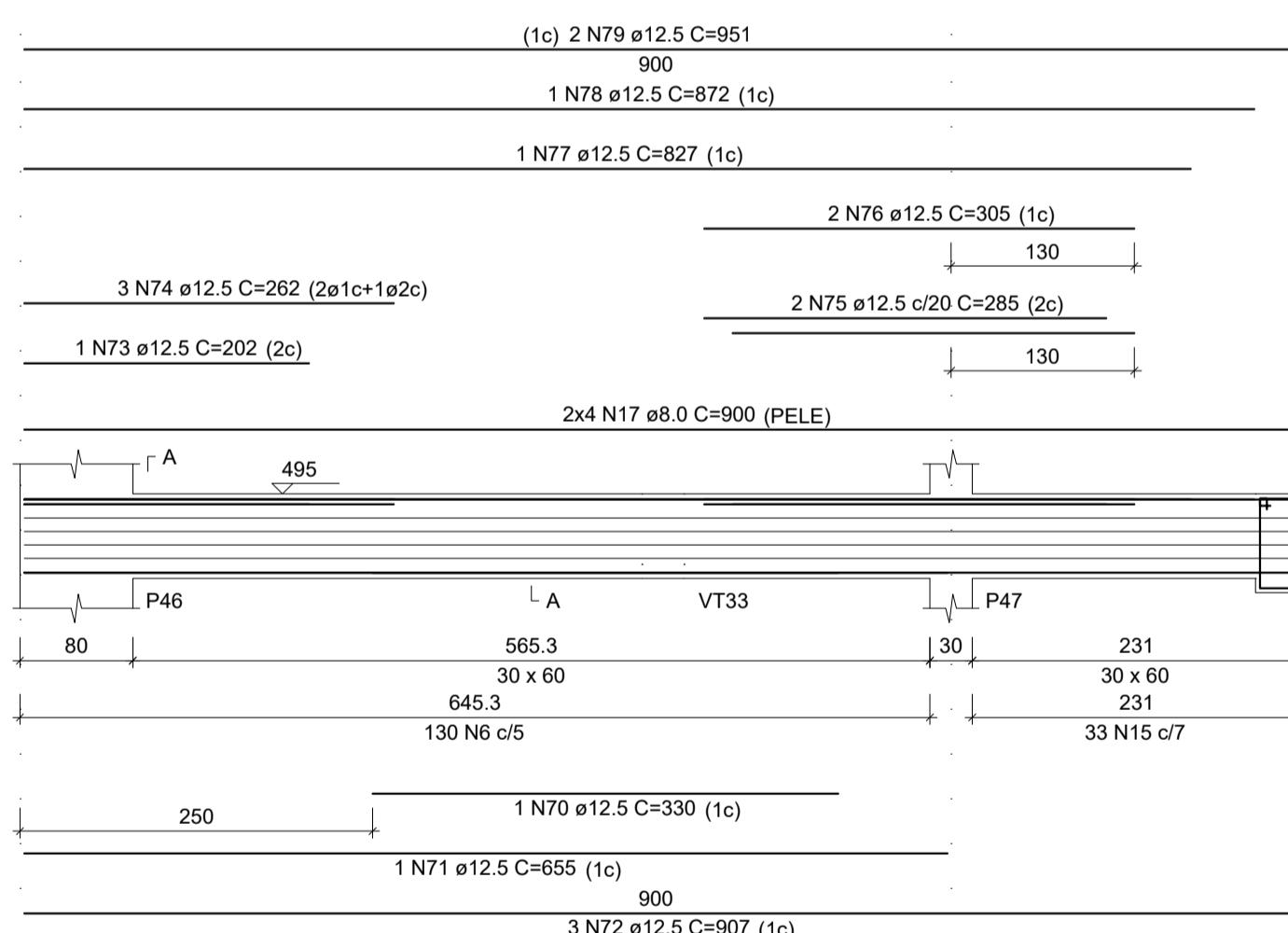
SEÇÃO A-A

ESC 1:25



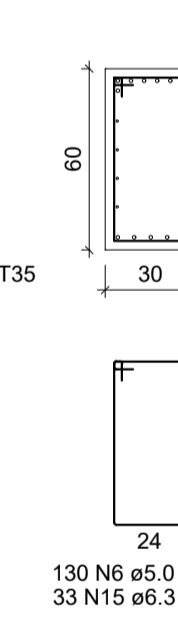
VT22

ESC 1:50



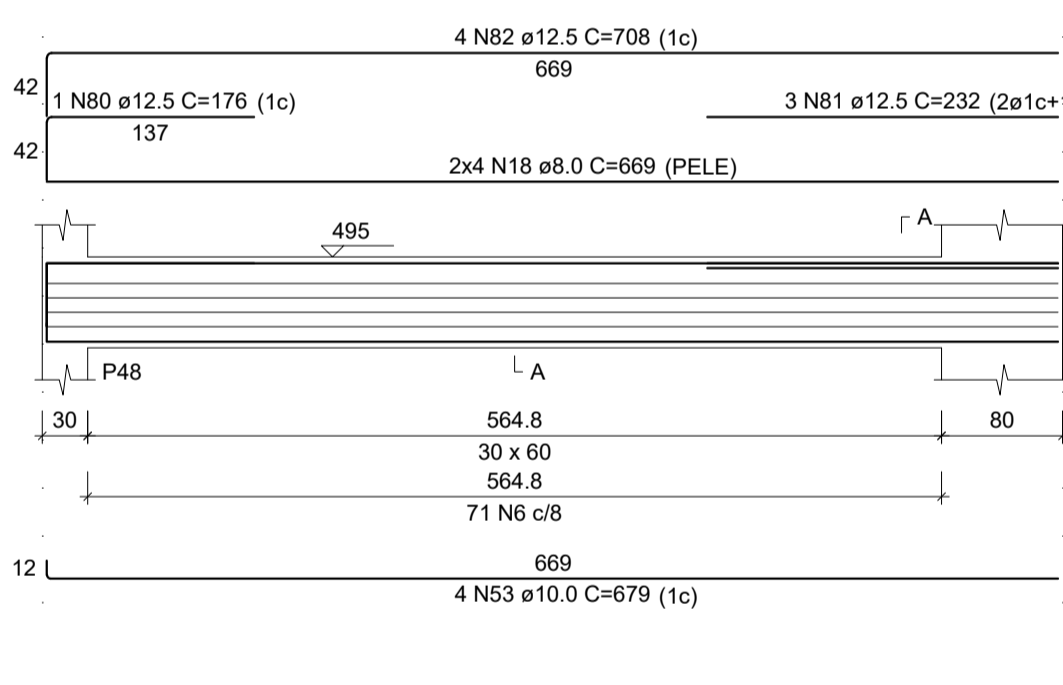
SEÇÃO A-A

ESC 1:25



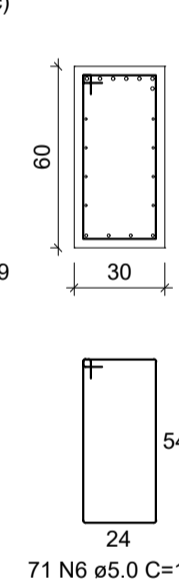
VT23

ESC 1:50



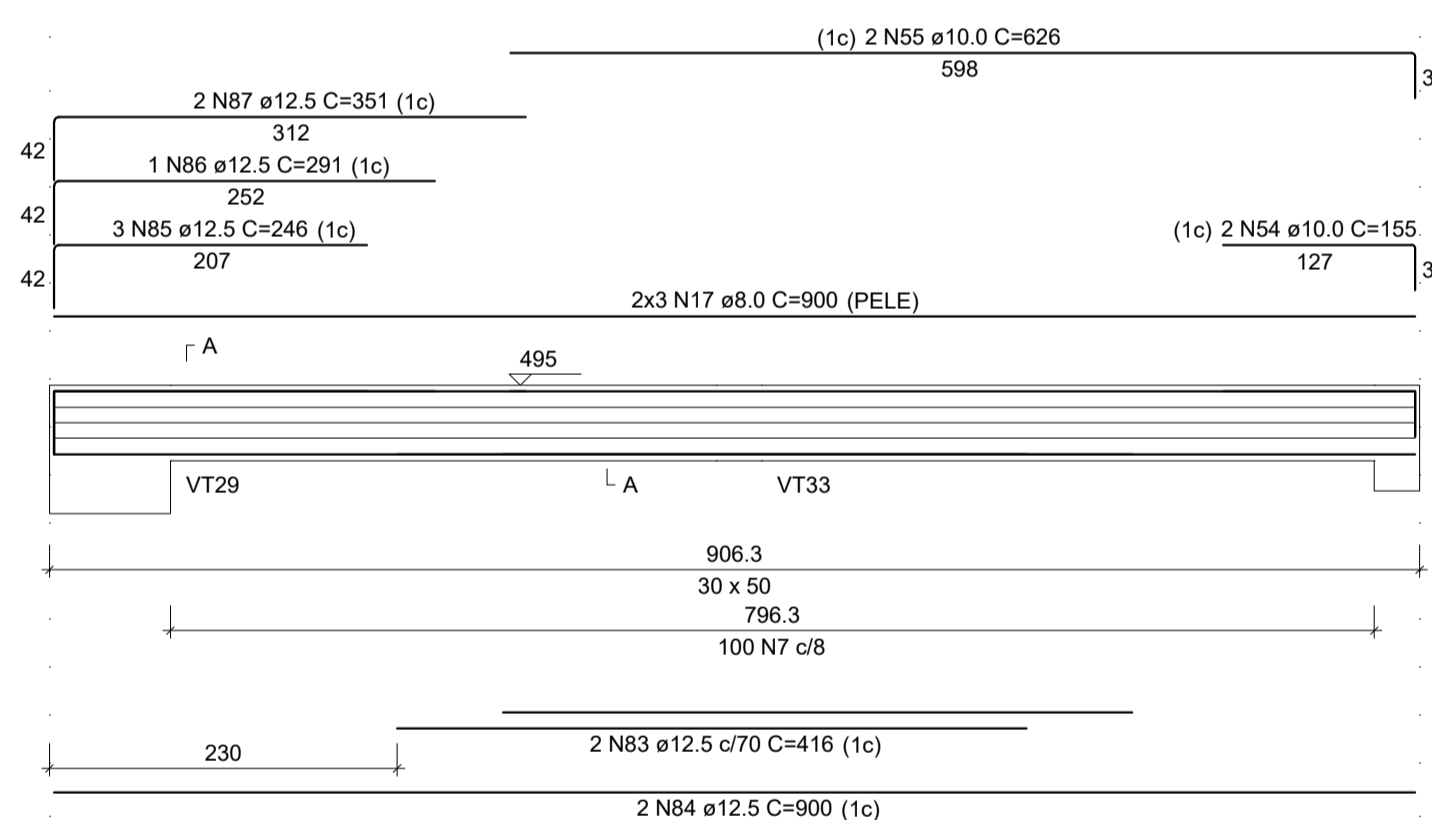
SEÇÃO A-A

ESC 1:25



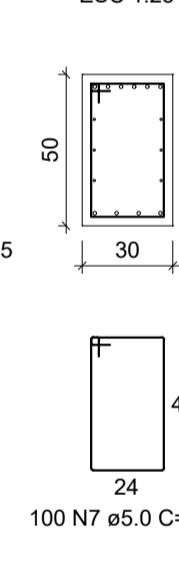
VT24

ESC 1:50



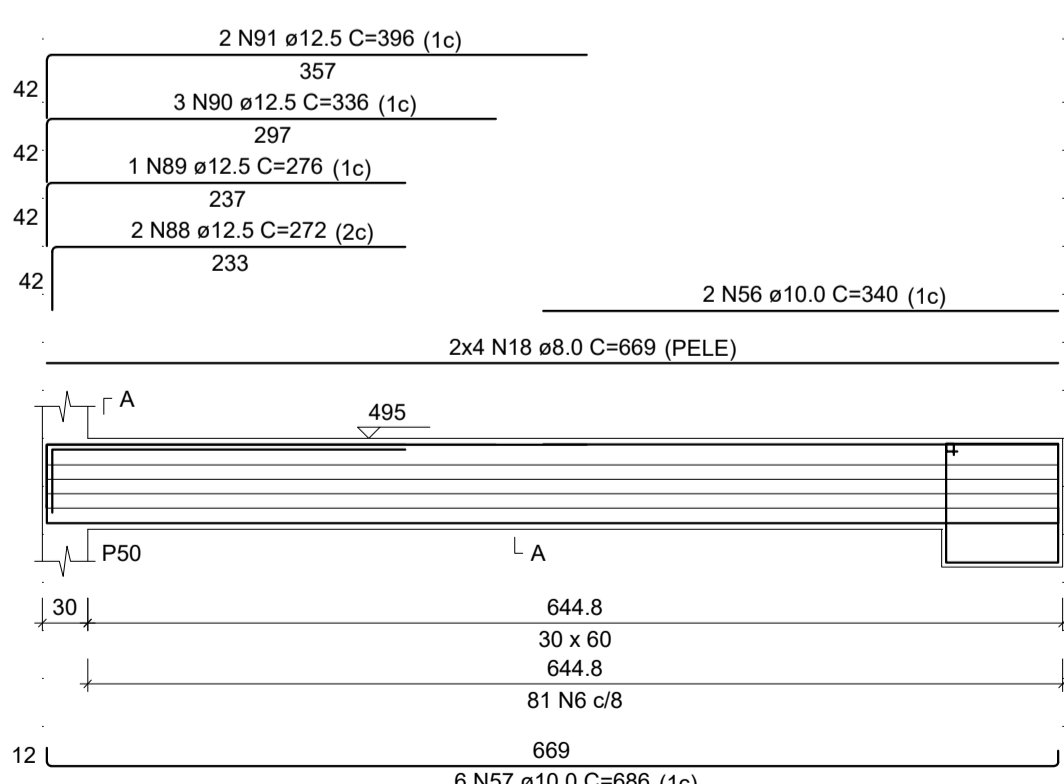
SEÇÃO A-A

ESC 1:25



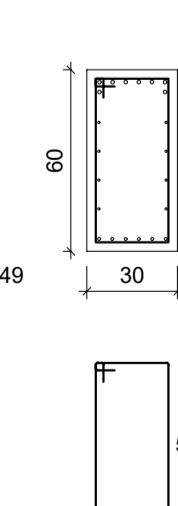
VT25

ESC 1:50



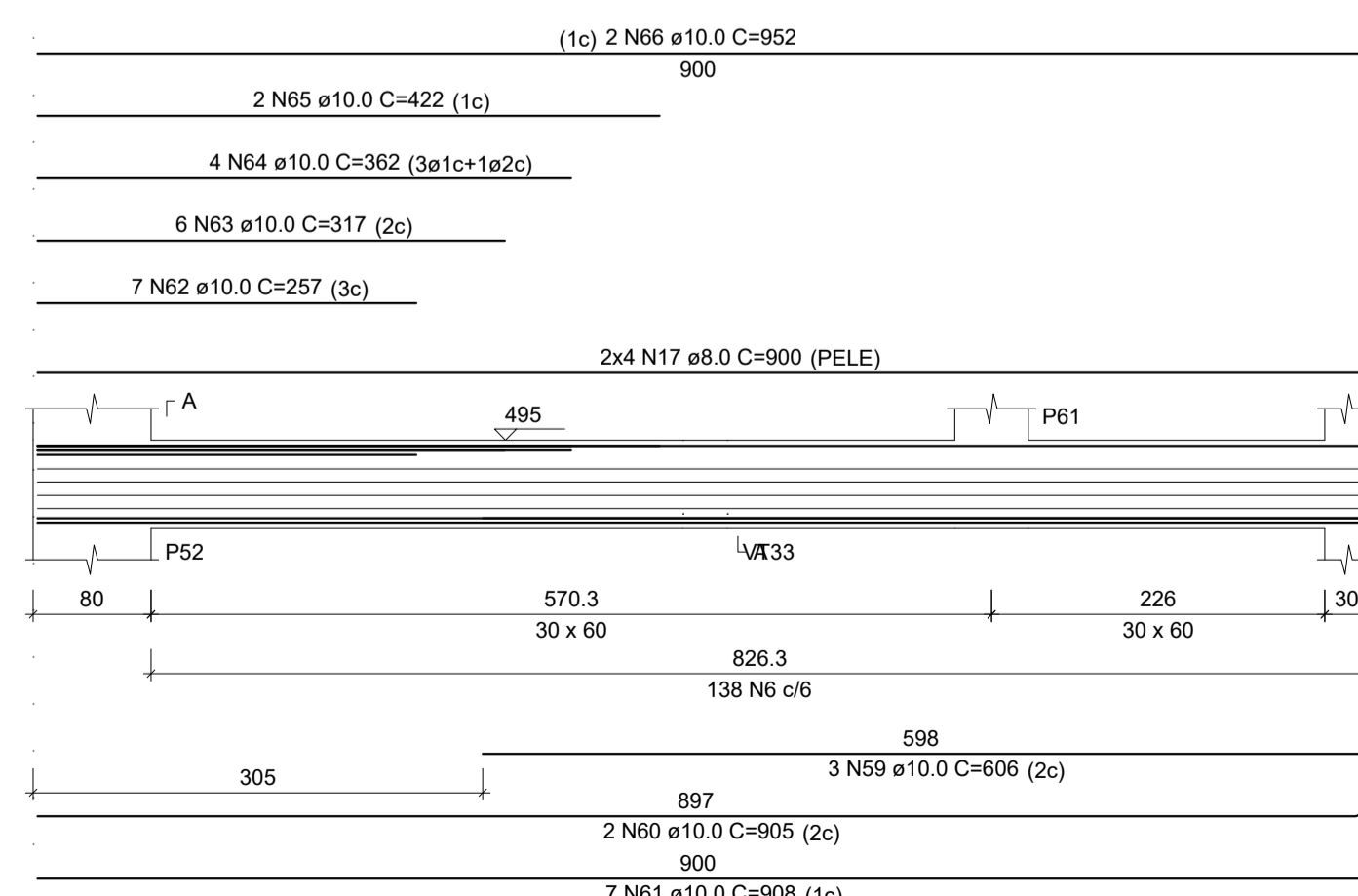
SEÇÃO A-A

ESC 1:25



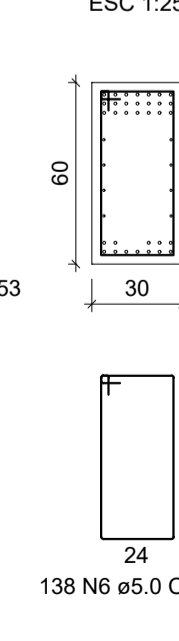
VT26

ESC 1:50



SEÇÃO A-A

ESC 1:25



RELAÇÃO DO AÇO

AÇO	N	DIAM (mm)	QUANT	C.UNIT (cm)	C.TOTAL (cm)
CA60	1	5.0	35	137	4795
CA60	2	5.0	93	107	9951
CA60	3	5.0	108	147	15876
CA60	4	5.0	2	252	510
CA60	5	5.0	38	97	3686
CA60	6	5.0	420	167	70140
CA60	7	5.0	100	147	14700
CA60	8	6.3	6	869	5214
CA60	9	6.3	6	669	4014
CA60	10	6.3	8	638	5104
CA60	11	6.3	2	275	1350
CA60	12	6.3	4	384	1536
CA60	13	6.3	8	1200	9600
CA60	14	6.3	8	128	1024
CA60	15	6.3	33	168	5544
CA60	16	8.0	3	218	654
CA60	17	8.0	22	900	19800
CA60	18	8.0	16	669	10704
CA60	19	10.0	1	291	291
CA60	20	10.0	2	869	1738
CA60	21	10.0	2	900	1800
CA60	22	10.0	1	176	176
CA60	23	10.0	1	233	233
CA60	24	10.0	2	237	474
CA60	25	10.0	1	179	179
CA60	26	10.0	2	182	364
CA60	27	10.0	2	708	1416
CA60	28	10.0	3	648	1944
CA60	29	10.0	3	227	681
CA60	30	10.0	1	272	272
CA60	31	10.0	2	202	404
CA60	32	10.0	1	179	179
CA60	33	10.0	3	638	1914
CA60	34	10.0	1	137	137
CA60	35	10.0	7	257	1799
CA60	36	10.0	2	250	500
CA60	37	10.0	2	135	270
CA60	38	10.0	4	374	1496
CA60	39	10.0	1	205	205
CA60	40	10.0	1	143	143
CA60	41	10.0	1	205	205
CA60	42	10.0	1	268	268
CA60	43	10.0	2	894	1788
CA60	44	10.0	3	458	1374
CA60	45	10.0	2	220	440
CA60	46	10.0	2	380	760
CA60	47	10.0	1	597	597
CA60	48	10.0	1	642	642
CA60	49	10.0	1	1187	1187
CA60	50	10.0	2	1199	2398
CA60	51	10.0	2	205	410
CA60	52	10.0	1	189	189
CA60	53	10.0	4	679	2716
CA60	54	10.0	2	155	310
CA60	55	10.0	2	626	1252
CA60	56	10.0	2	340	680
CA60	57	10.0	6	686	4116
CA60	58	10.0	1	319	319
CA60	59	10.0	3	606	1818
CA60	60	10.0	2	905	1810
CA60	61	10.0	7	908	6356
CA60	62	10.0	2	257	514
CA60	63	10.0	6	317	1902
CA60	64	10.0	4	362	1448
CA60	65	10.0	2	422	844
CA60	66	10.0	2	952	1904
CA60	67	12.5	4	669	2676
CA60	68	12.5	3	242	726
CA60	69	12.5	2	322	644
CA60	70	12.5	1	330	330
CA60	71	12.5	1	655	655
CA60	72	12.5	3	907	2721
CA60	73	12.5	1	202	202
CA60	74	12.5	3	262	786
CA60	75	12.5	2	285	570
CA60	76	12.5	2	305	610
CA60	77	12.5	1	827	827
CA60	78	12.5	1	872	872
CA60	79	12.5	2	951	1902
CA60	80	12.5	1	176	176
CA60	81	12.5	3	232	696
CA60	82	12.5	4	708	2832
CA60	83	12.5	2	416	832
CA60	84	12.5	2	900	1800
CA60	85	12.5	3	246	738
CA60	86	12.5	1	291	291
CA60	87	12.5	2	351	702
CA60	88	12.5	2	272	544
CA60	89	12.5	1	276	276
CA60	90	12.5	3	336	1008
CA60	91	12.5	2	396	792

RESUMO DO AÇO

AÇO	DIAM (mm)	C.TOTAL (m)	PESO + 10% (kg)
CA50	6.3	333.9	89.9
CA50	8.0	311.6	135.2
CA50	10.0	529.3	339
CA50	12.5	242.1	256.5
CA50	5.0	1196.6	202.9
PESO TOTAL (kg)			
CA50		840.6	
CA60		202.9	

Volume de concreto (C-30) = 10.10 m³
Área de forma = 81.80 m²

CONSTRUTORA STONE CONSTRUTORA STONE CONSTRUTORA STONE

Tudo pelo gol do cliente!

OBRA: NÚCLEO INFANTIL CANTINHO DO CÉU

ÁREA EXISTENTE: 0,00 m²

ÁREA A CONSTRUIR: 1.199,17 m²

LOCAL: BOM JESUS DO AMPARO - MG

EQUIPE TÉCNICA: CLAUDIONOR RODRIGUES (CREA-MG 347/119)

PROPRIETÁRIO: PREFEITURA MUNICIPAL DE BOM JESUS DO AMPARO-MG

RESP. TÉCNICO - ENGENHEIRO CIVIL: CLAUDIONOR RODRIGUES (STONE) CREA-MG 347/119

CONTEÚDO: VIGAS TÉRREO

PROJETO: PROJETO ESTRUTURAL

ESCALA: INDICADA

DESENHISTA: STONE

DATA: FEV/2023

FOLHA: 34/66

DIREITOS AUTORAIS RESERVADOS. PROIBIDA A REPRODUÇÃO TOTAL OU PARCIAL.