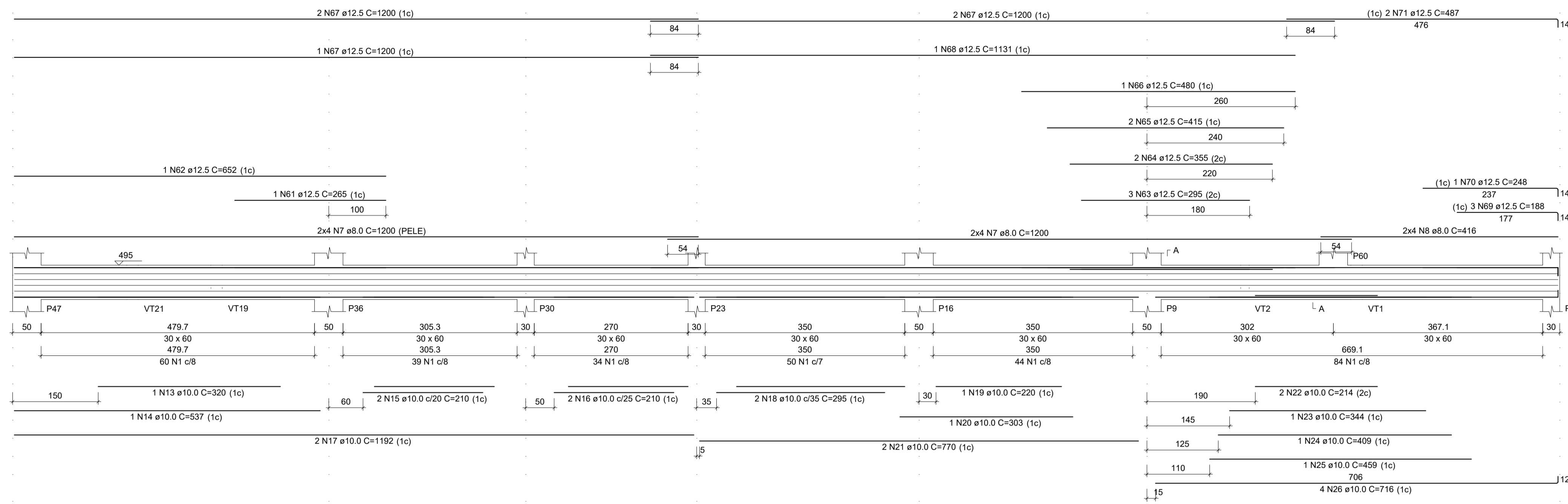
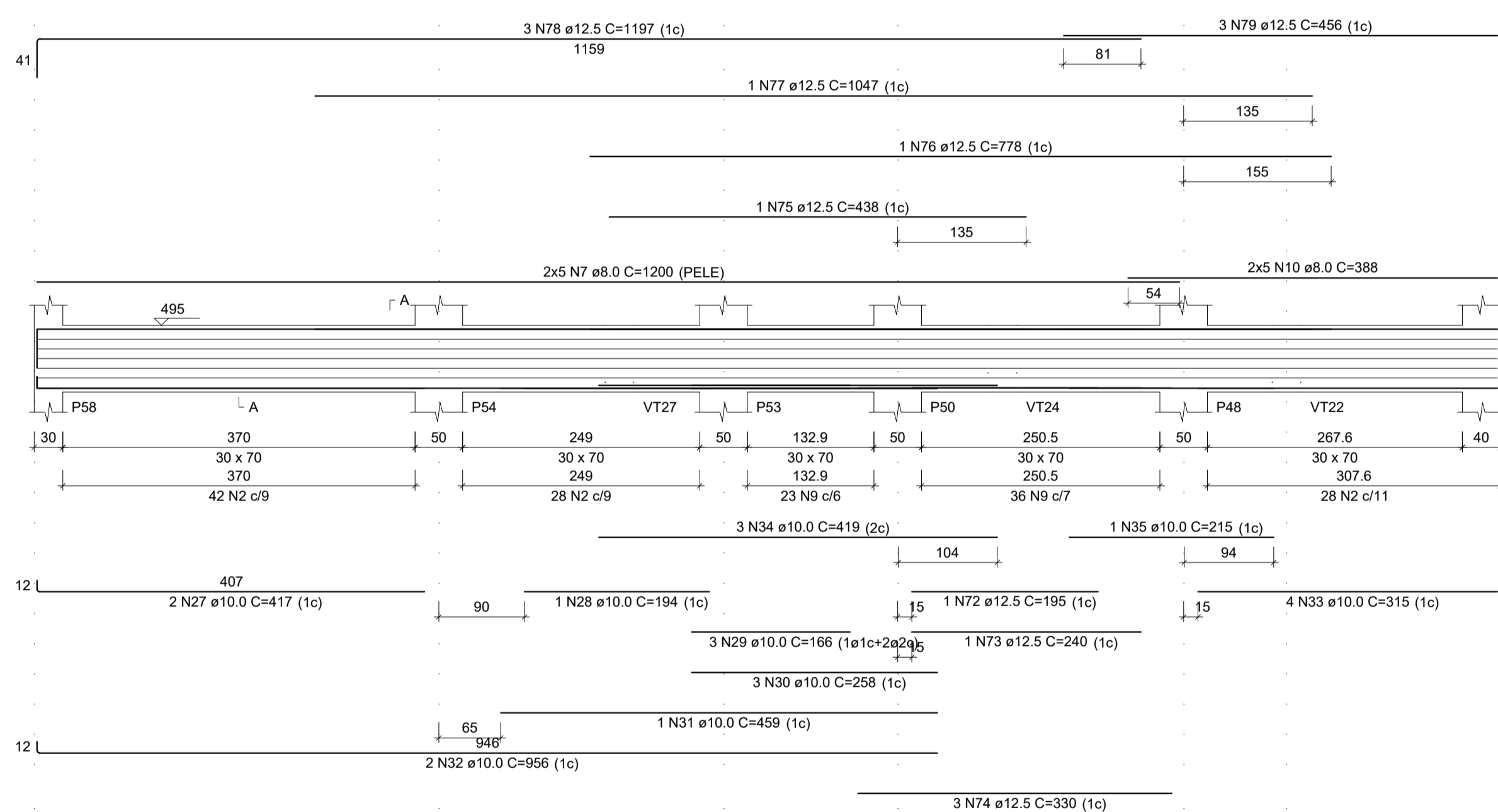


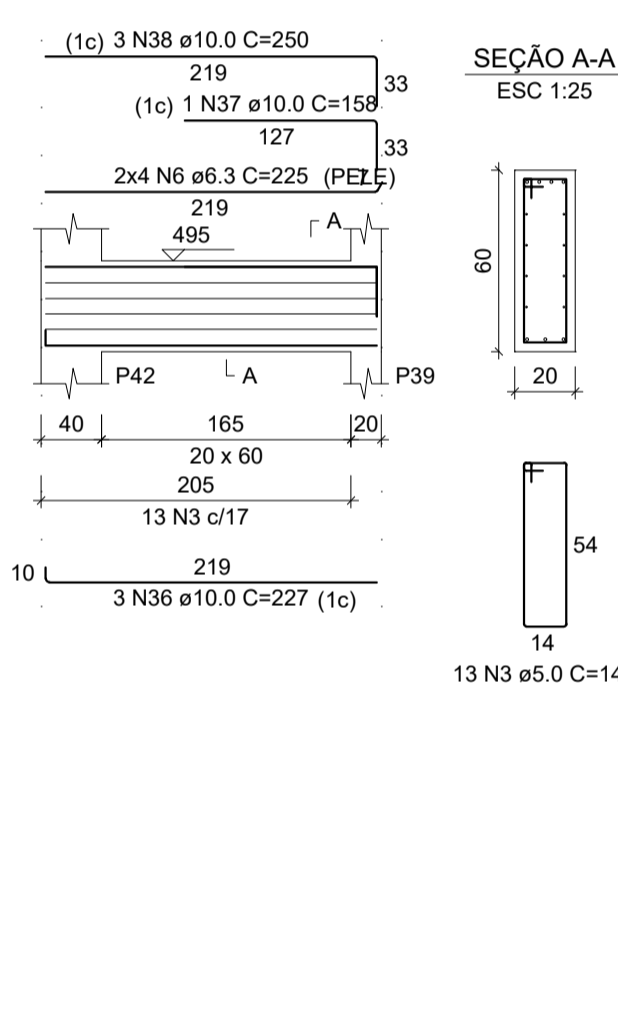
VT34
ESC 1:50



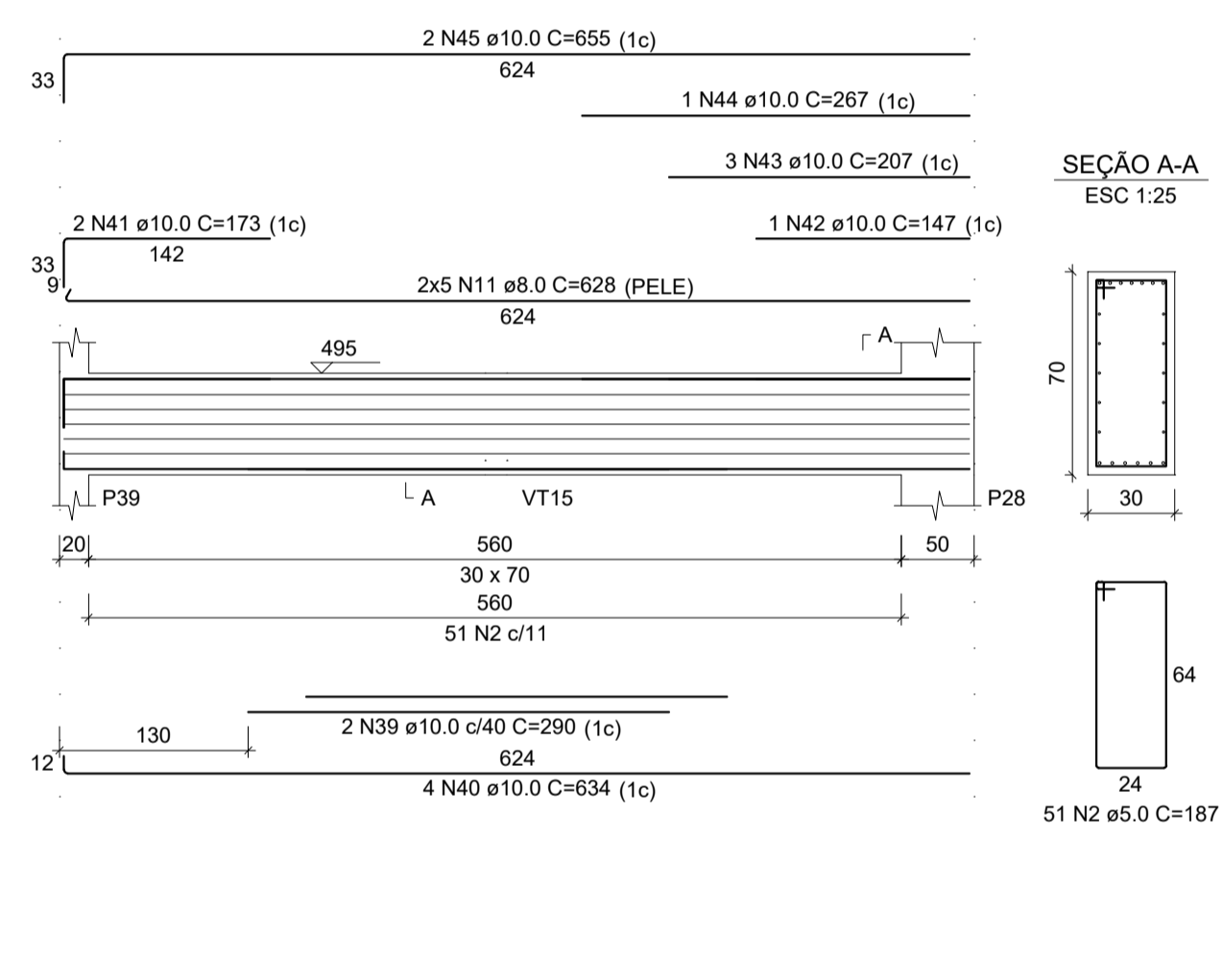
VT35
ESC 1:50



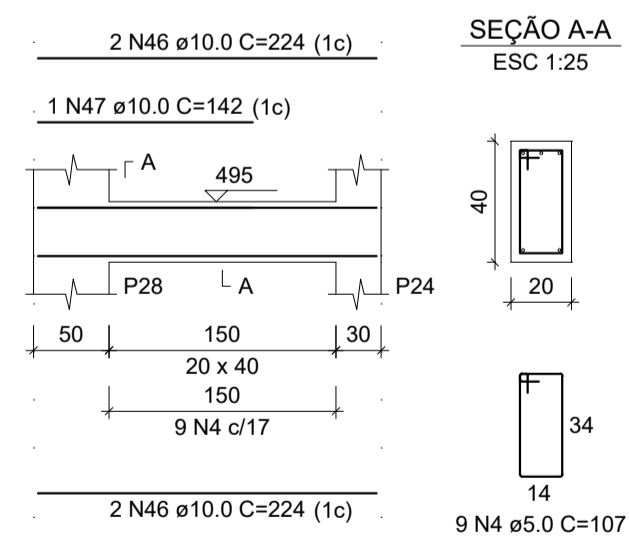
VT36
ESC 1:50



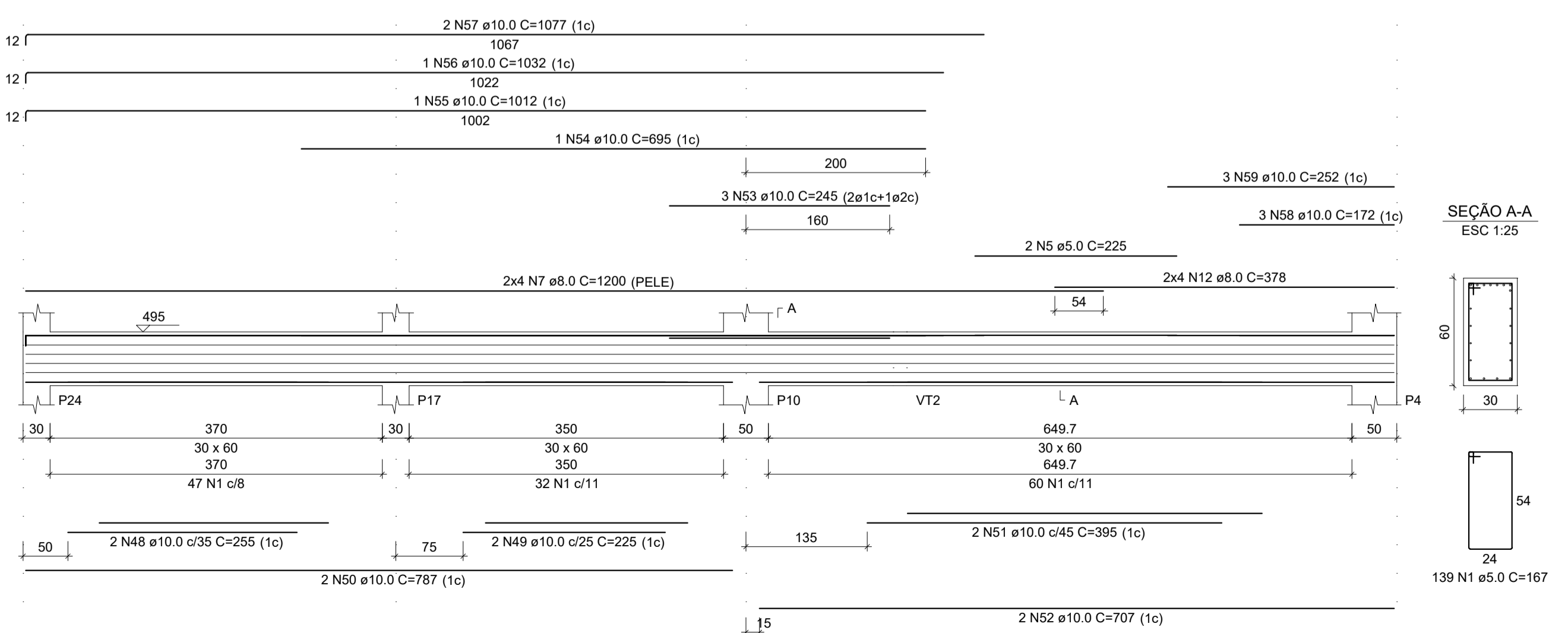
VT37
ESC 1:50



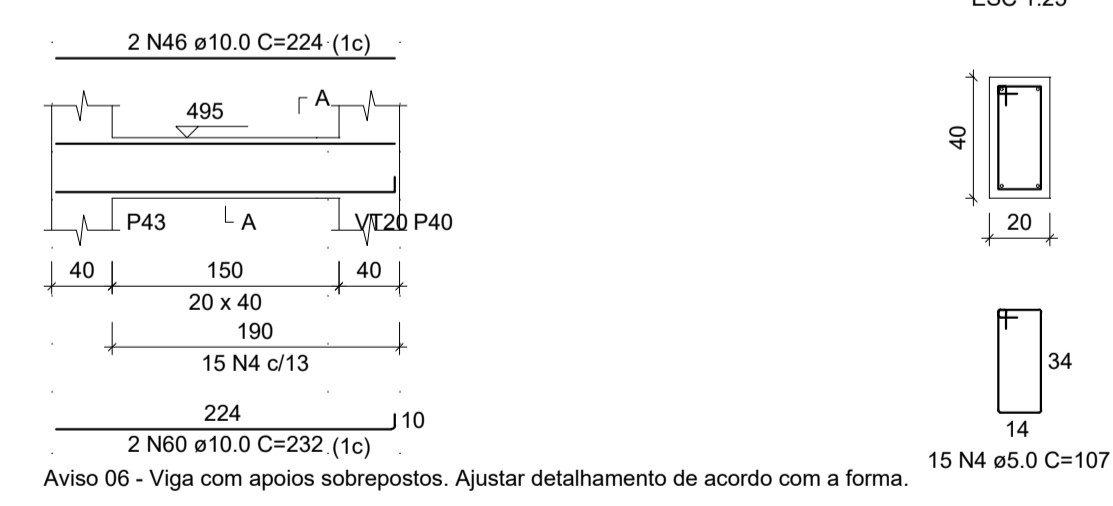
VT38
ESC 1:50



VT39
ESC 1:50



VT40
ESC 1:50



RELAÇÃO DO AÇO

VT34 VT37 VT40	VT35 VT38	VT36 VT39			
AÇO	N	DIAM (mm)	QUANT	C. UNIT (cm)	C. TOTAL (cm)
CA60	1	5.0	450	167	75150
	2	5.0	149	187	27863
	3	5.0	13	147	1911
	4	5.0	24	107	2568
	5	5.0	2	225	450
	6	6.3	8	225	1800
	7	8.0	34	1200	40800
	8	8.0	8	416	3328
	9	8.0	59	188	11092
	10	8.0	10	388	3880
	11	8.0	10	628	6280
	12	8.0	8	378	3024
	13	10.0	1	320	320
	14	10.0	1	537	537
	15	10.0	2	210	420
	16	10.0	2	210	420
	17	10.0	2	1192	2384
	18	10.0	2	295	590
	19	10.0	1	220	220
	20	10.0	1	303	303
	21	10.0	2	770	1540
	22	10.0	2	214	428
	23	10.0	1	344	344
	24	10.0	1	409	409
	25	10.0	1	459	459
	26	10.0	4	716	2864
	27	10.0	2	417	834
	28	10.0	1	194	194
	29	10.0	3	166	498
	30	10.0	3	258	774
	31	10.0	1	459	459
	32	10.0	2	956	1912
	33	10.0	4	315	1260
	34	10.0	3	419	1257
	35	10.0	1	215	215
	36	10.0	3	227	681
	37	10.0	1	158	158
	38	10.0	3	250	750
	39	10.0	2	290	580
	40	10.0	4	634	2536
	41	10.0	2	173	346
	42	10.0	1	147	147
	43	10.0	3	207	621
	44	10.0	1	267	267
	45	10.0	2	655	1310
	46	10.0	6	224	1344
	47	10.0	1	142	142
	48	10.0	2	255	510
	49	10.0	2	225	450
	50	10.0	2	787	1574
	51	10.0	2	395	790
	52	10.0	2	707	1414
	53	10.0	3	245	735
	54	10.0	1	695	695
	55	10.0	1	1012	1012
	56	10.0	1	1032	1032
	57	10.0	2	1077	2154
	58	10.0	3	172	516
	59	10.0	3	252	756
	60	10.0	2	232	464
	61	12.5	1	265	265
	62	12.5	1	652	652
	63	12.5	3	295	885
	64	12.5	2	355	710
	65	12.5	2	415	830
	66	12.5	1	480	480
	67	12.5	5	1200	6000
	68	12.5	1	1131	1131
	69	12.5	3	188	564
	70	12.5	1	248	248
	71	12.5	2	487	974
	72	12.5	1	195	195
	73	12.5	1	240	240
	74	12.5	3	330	990
	75	12.5	1	438	438
	76	12.5	1	778	778
	77	12.5	1	1047	1047
	78	12.5	3	1197	3591
	79	12.5	3	456	1368

RESUMO DO AÇO

AÇO	DIAM (mm)	C. TOTAL (m)	PESO + 10% (kg)
CA50	6.3	18	4.8
	8.0	684	296.9
	10.0	396.3	268.7
	12.5	213.9	229.6
	5.0	1079.4	183
PESO TOTAL (kg)			
CA50		797.1	
CA60		183	

Volume de concreto (C-30) = 11.11 m³
Área de forma = 77.21 m²



OBRA: NÚCLEO INFANTIL CANTINHO DO CÉU		ÁREA EXISTENTE: 0,00 m²	ÁREA A CONSTRUIR: 1.199,17m²
LOCAL: BOM JESUS DO AMPARO - MG	EQUIPE TÉCNICA: CLAUDIONOR RODRIGUES Eng. Civil CREA - MG 347.119	RESP. TÉCNICO - ENGENHEIRO CIVIL: CLAUDIONOR RODRIGUES (STONE) CREA -MG 347/119	
PROPRIETÁRIO: PREFEITURA MUNICIPAL DE BOM JESUS DO AMPARO-MG CNPJ: 18.317.693/0001-06	CONTEÚDO: VIGAS TÉRREO		
ESCALA: INDICADA	DESENHISTA: STONE	DATA: FEV/2023	FOLHA: 36/ 66
DIREITOS AUTORAIS RESERVADOS. PROIBIDA A REPRODUÇÃO TOTAL OU PARCIAL.			