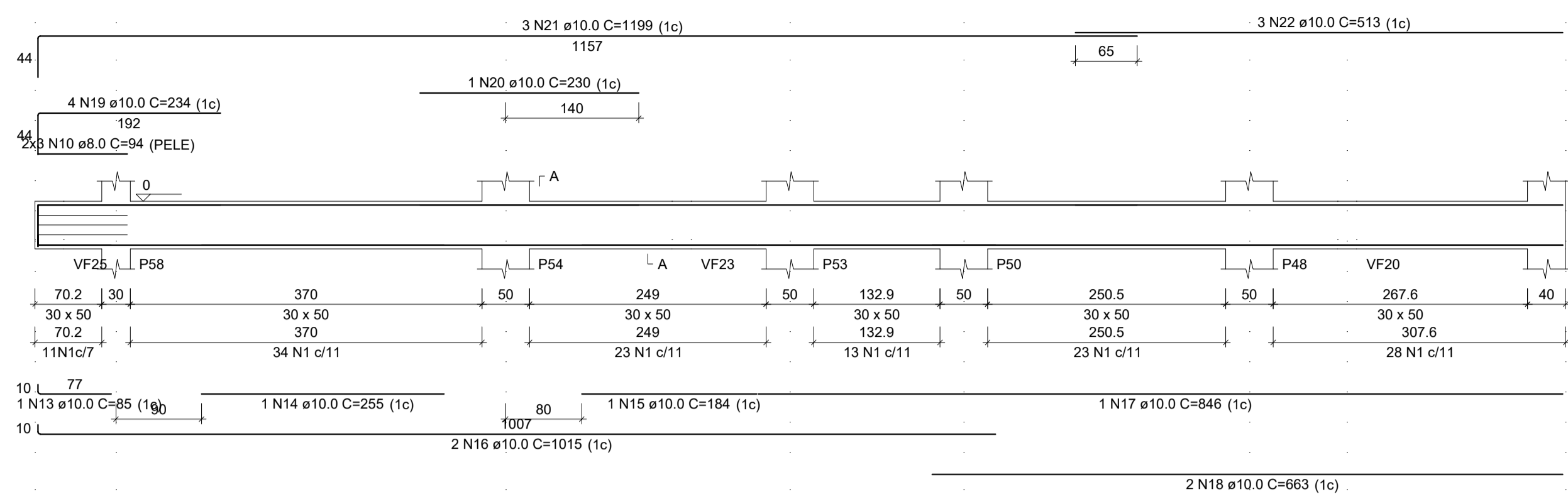


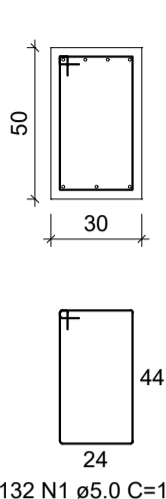
VF34

ESC 1:50



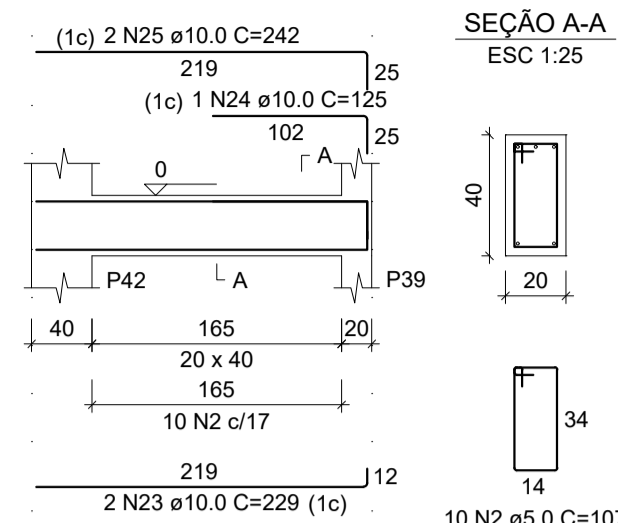
SEÇÃO A-A

ESC 1:25



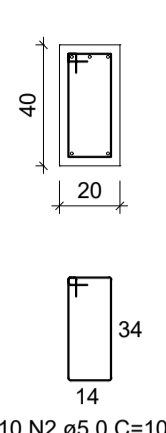
VF35

ESC 1:50



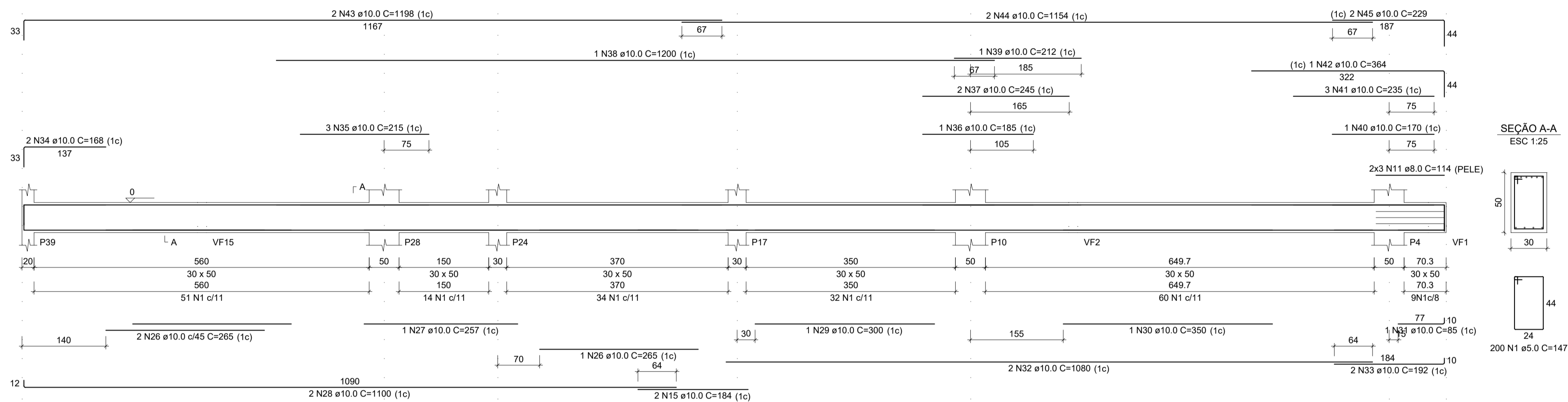
SEÇÃO A-A

ESC 1:25



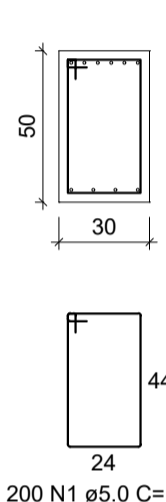
VF36

ESC 1:50



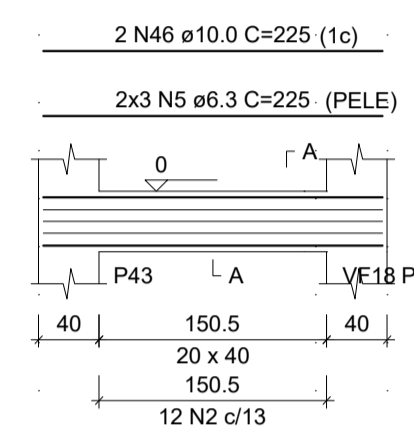
SEÇÃO A-A

ESC 1:25



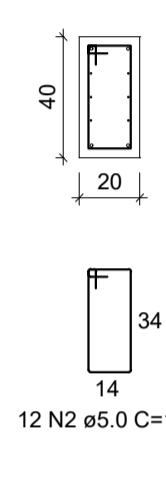
VF37

ESC 1:50



SEÇÃO A-A

ESC 1:25



2 N46 ø10.0 C=225 (1c)

2x3 N5 ø6.3 C=225 (PELE)

2 N46 ø10.0 C=225 (1c)

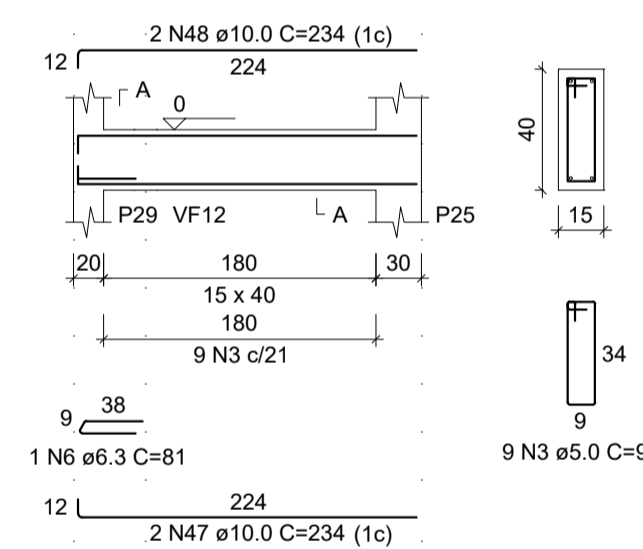
Aviso 06 - Viga com apoios sobrepostos. Ajustar detalhamento de acordo com a forma.

2 N46 ø10.0 C=225 (1c)

12 N2 ø5.0 C=107

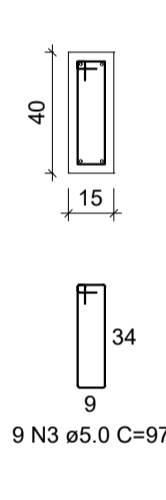
VF38

ESC 1:50



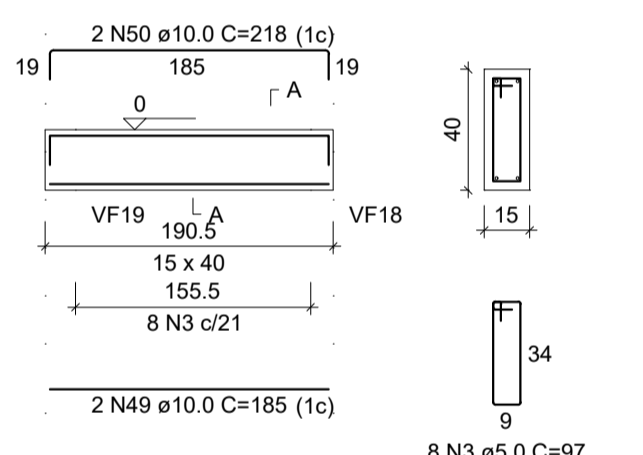
SEÇÃO A-A

ESC 1:25



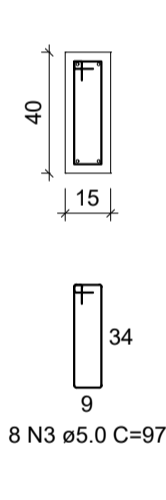
VF39

ESC 1:50



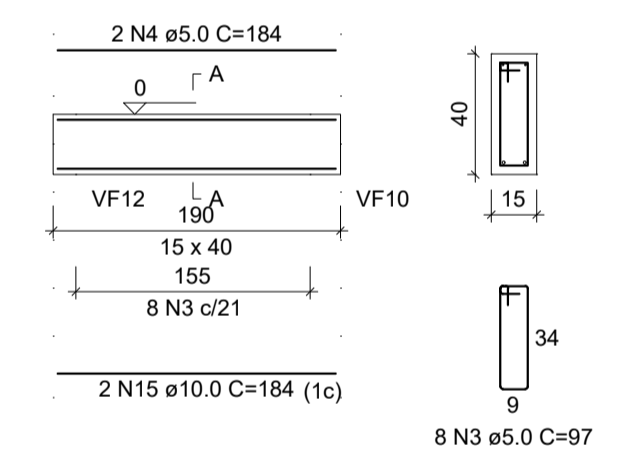
SEÇÃO A-A

ESC 1:25



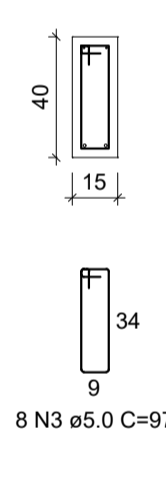
VF40

ESC 1:50



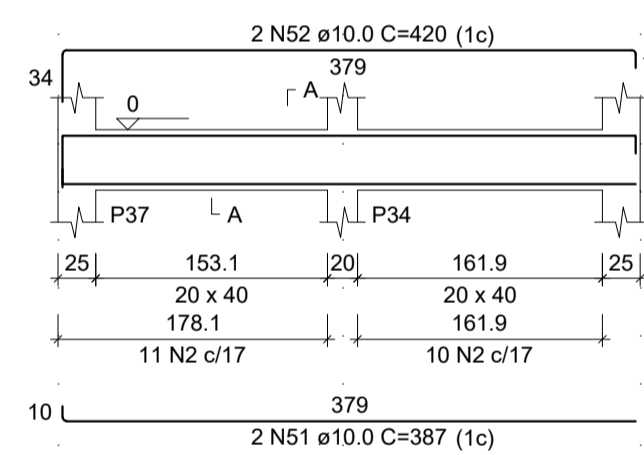
SEÇÃO A-A

ESC 1:25



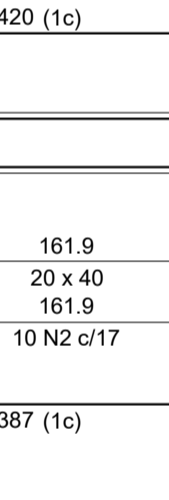
VF41

ESC 1:50



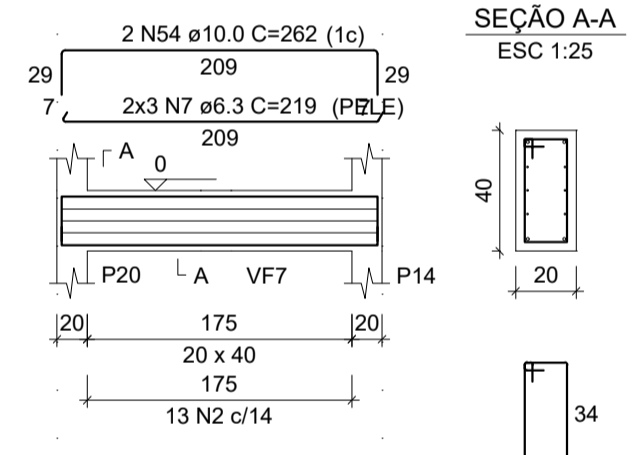
SEÇÃO A-A

ESC 1:25



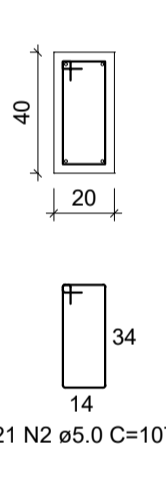
VF42

ESC 1:50



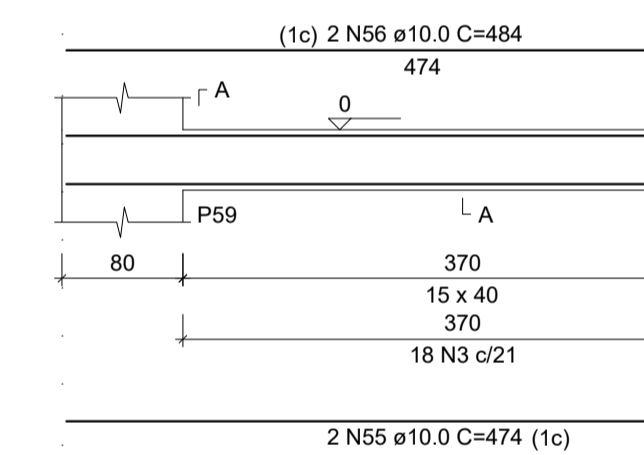
SEÇÃO A-A

ESC 1:25



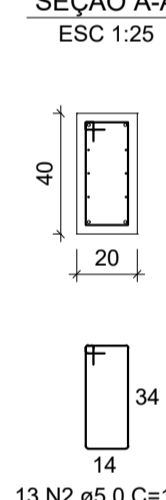
VF43

ESC 1:50



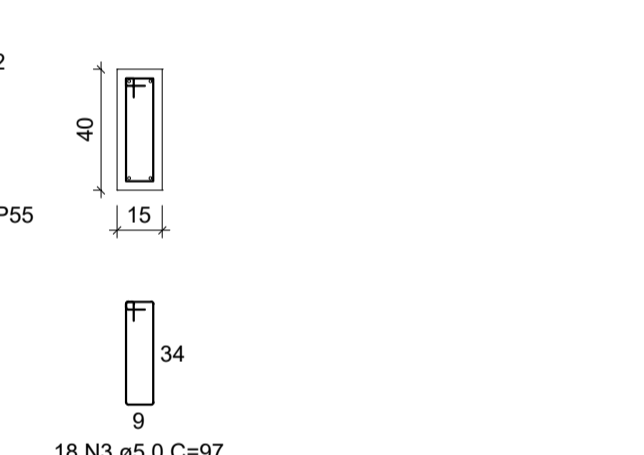
SEÇÃO A-A

ESC 1:25



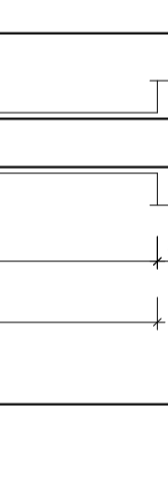
VF48

ESC 1:50



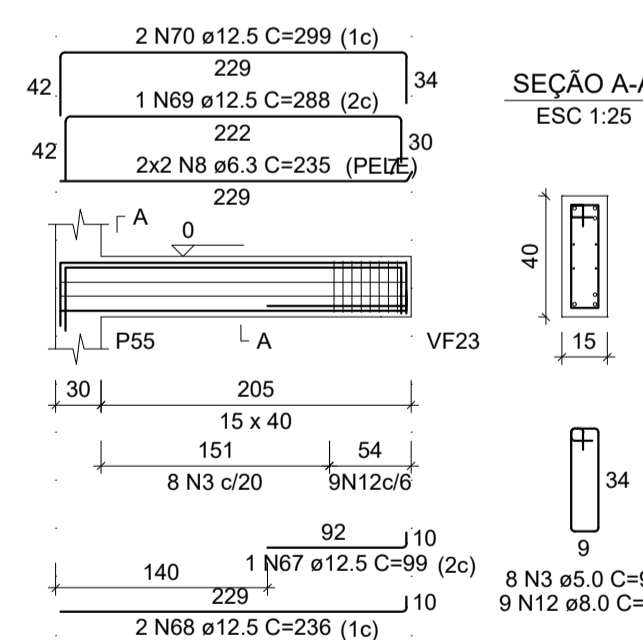
SEÇÃO A-A

ESC 1:25



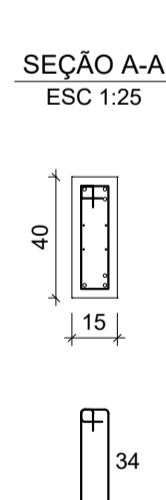
VF44

ESC 1:50



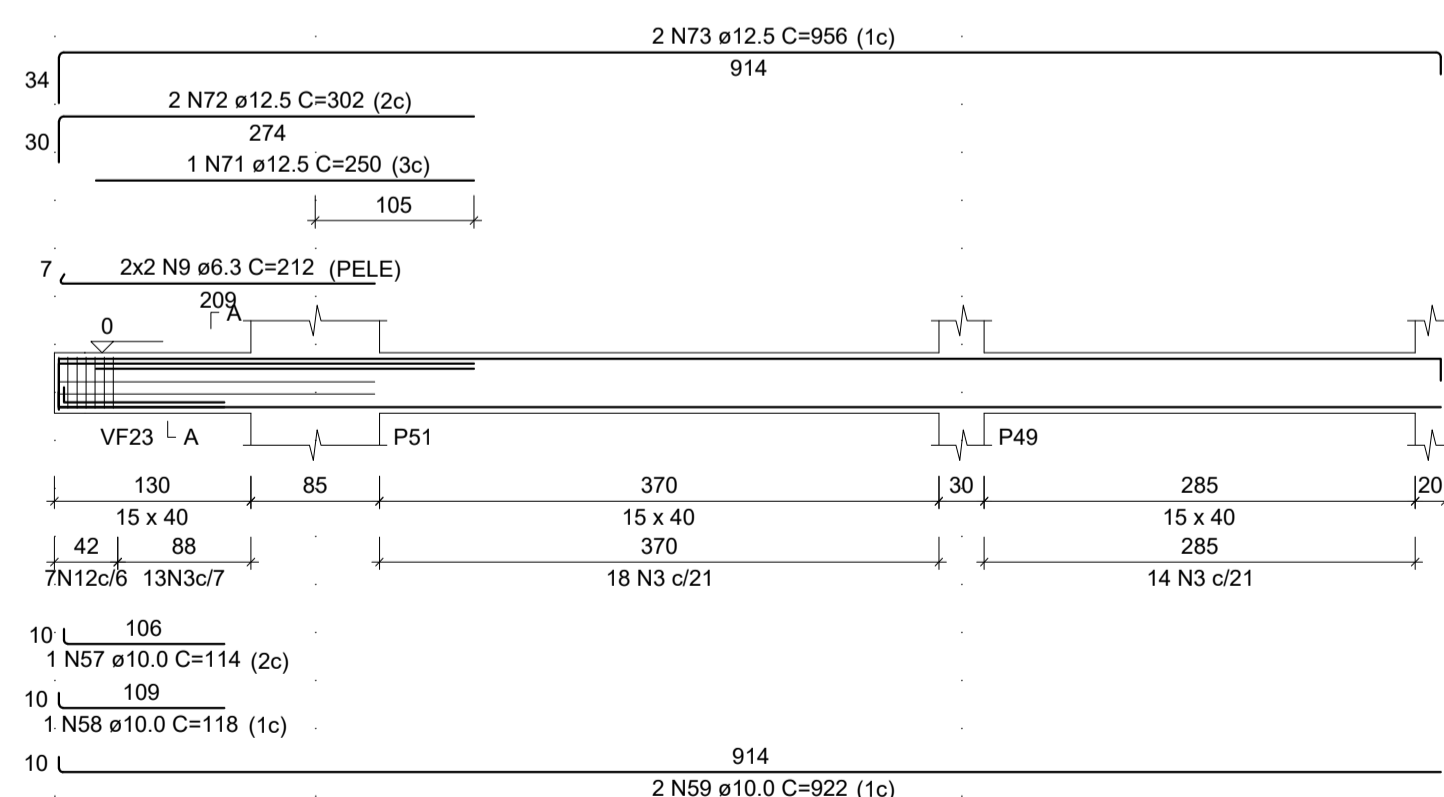
SEÇÃO A-A

ESC 1:25



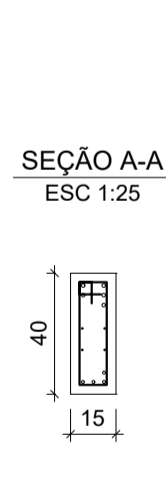
VF45

ESC 1:50



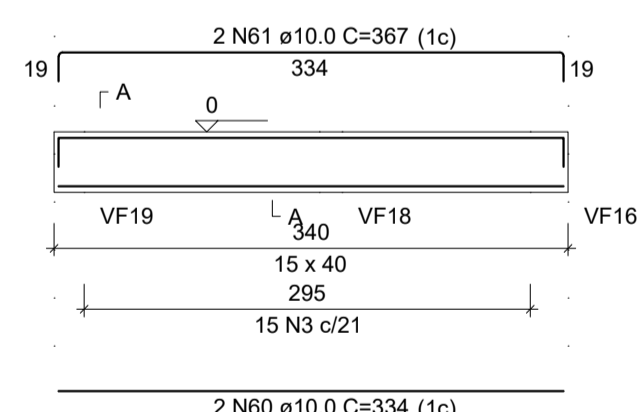
SEÇÃO A-A

ESC 1:25



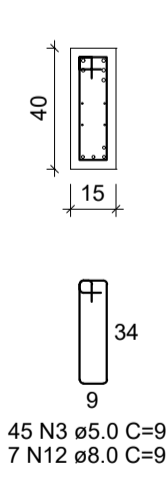
VF46

ESC 1:50



SEÇÃO A-A

ESC 1:25



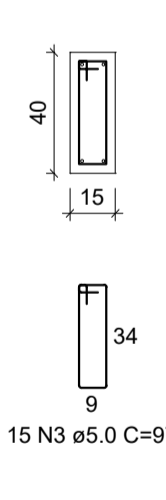
VF47

ESC 1:50



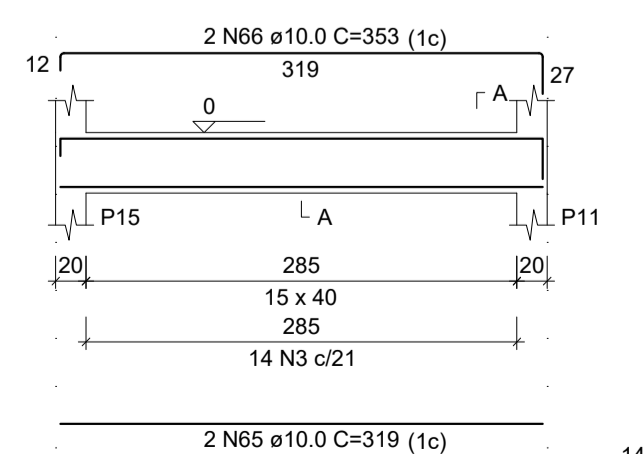
SEÇÃO A-A

ESC 1:25



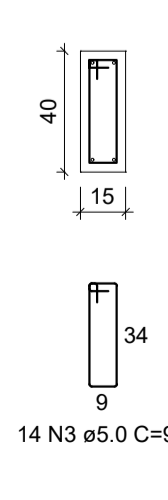
VF49

ESC 1:50



SEÇÃO A-A

ESC 1:25



RELAÇÃO DO AÇO

Table with columns: AÇO, N, DIAM (mm), QUANT, C. UNIT (cm), C. TOTAL (cm). Lists materials for beams VF34 through VF49.

RESUMO DO AÇO

Summary table with columns: AÇO, DIAM (mm), C. TOTAL (m), PESO + 10% (kg). Shows totals for CA50 and CA60.

Volume de concreto (C-30) = 7.75 m³
Área de forma = 82.13 m²



Project information table including: OBRA, NÚCLEO, LOCAL, PROPRIETÁRIO, CONTEÚDO, ESCALA, DESENHISTA, DATA, FOLHA, and other project details.