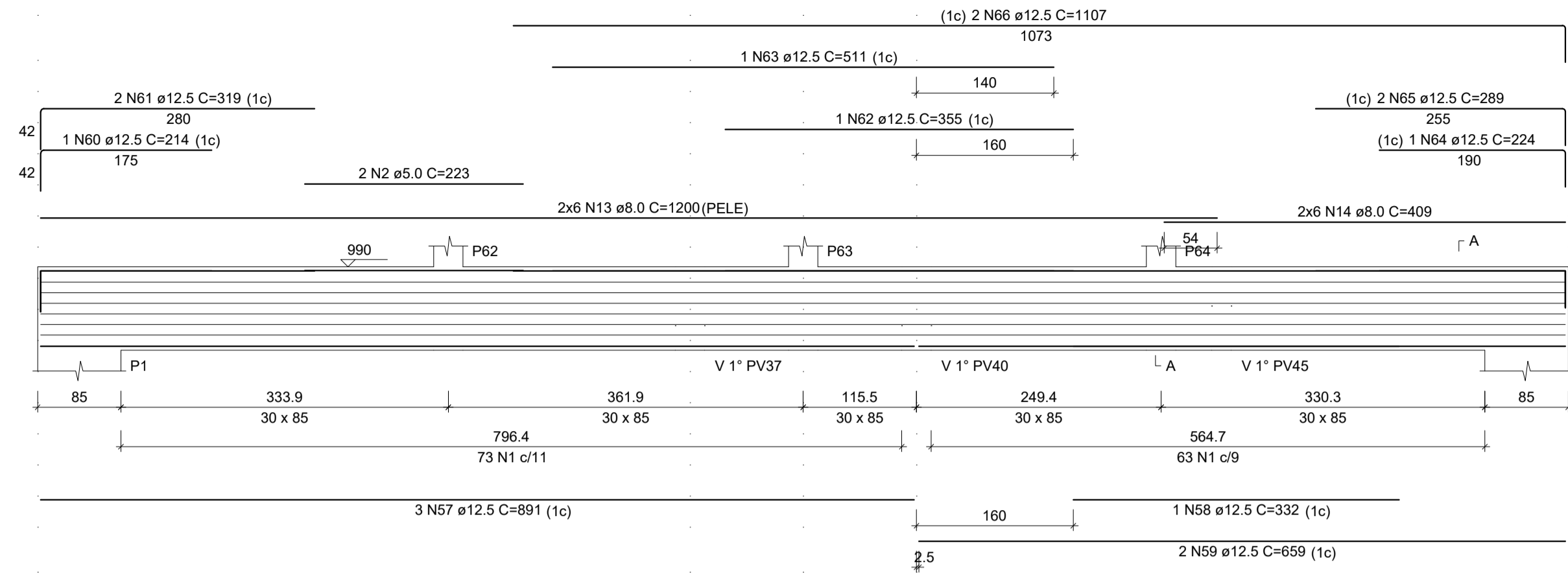
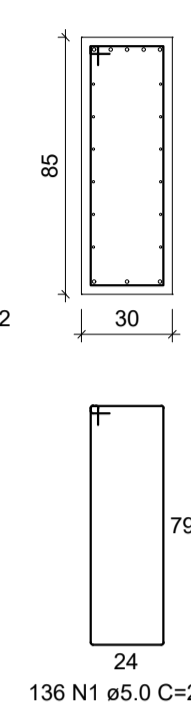


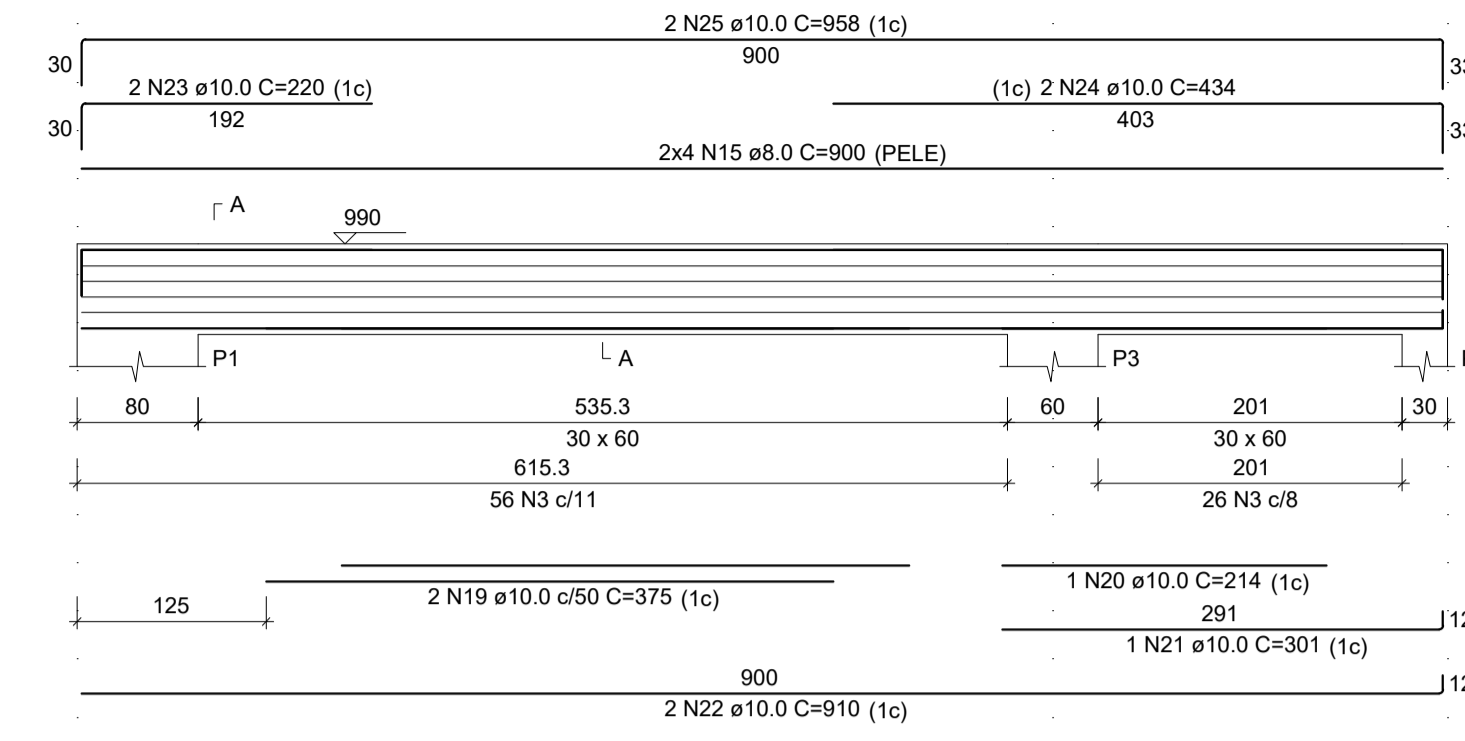
V 1° PV1
ESC 1:50



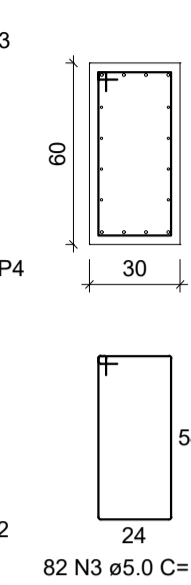
SEÇÃO A-A
ESC 1:25



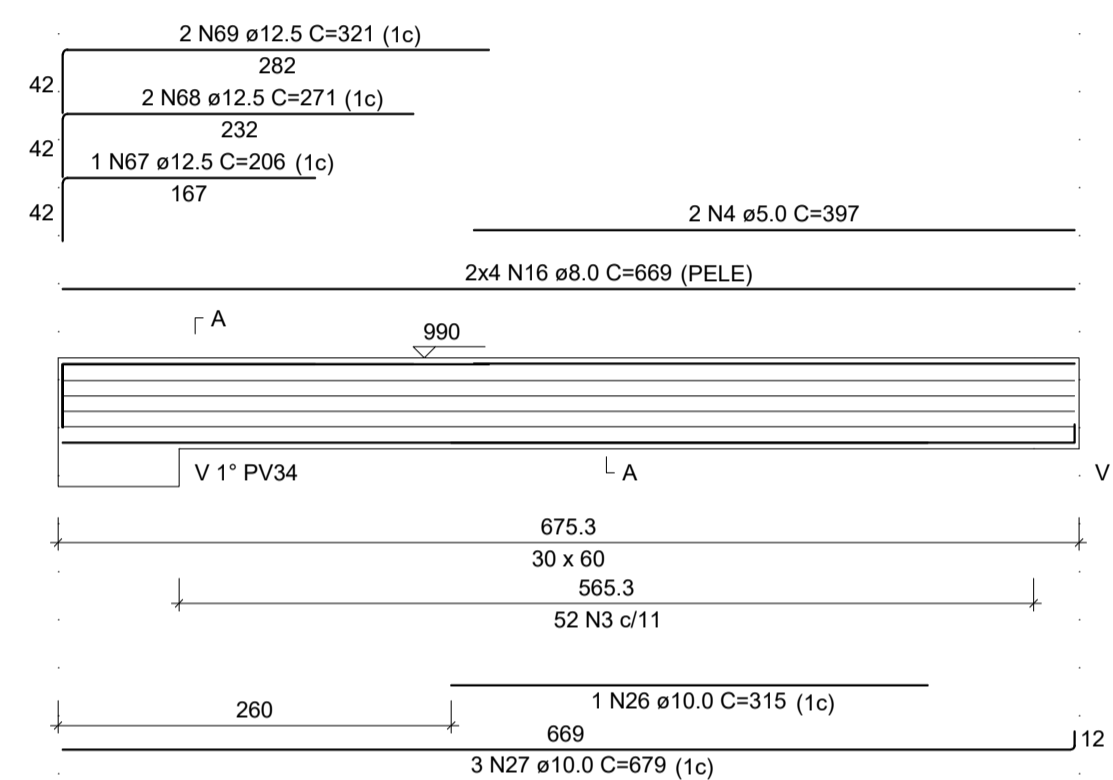
V 1° PV2
ESC 1:50



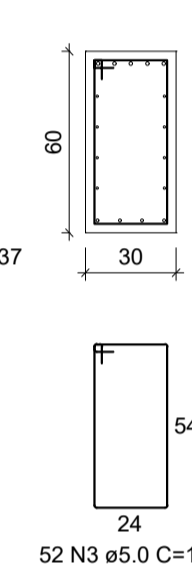
SEÇÃO A-A
ESC 1:25



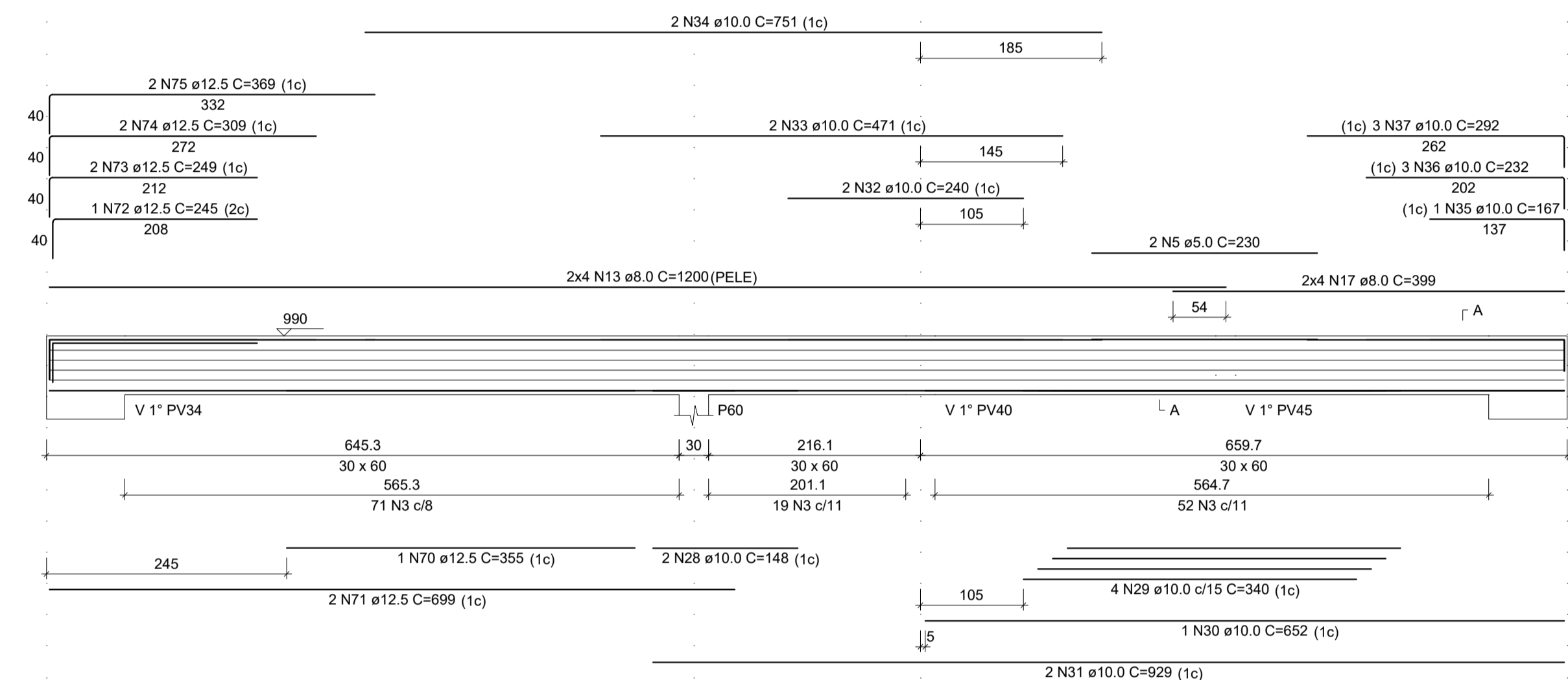
V 1° PV3
ESC 1:50



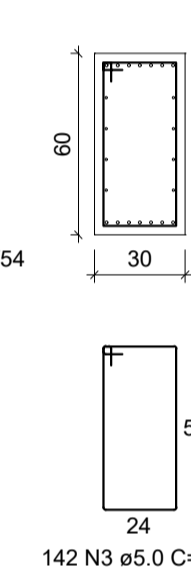
SEÇÃO A-A
ESC 1:25



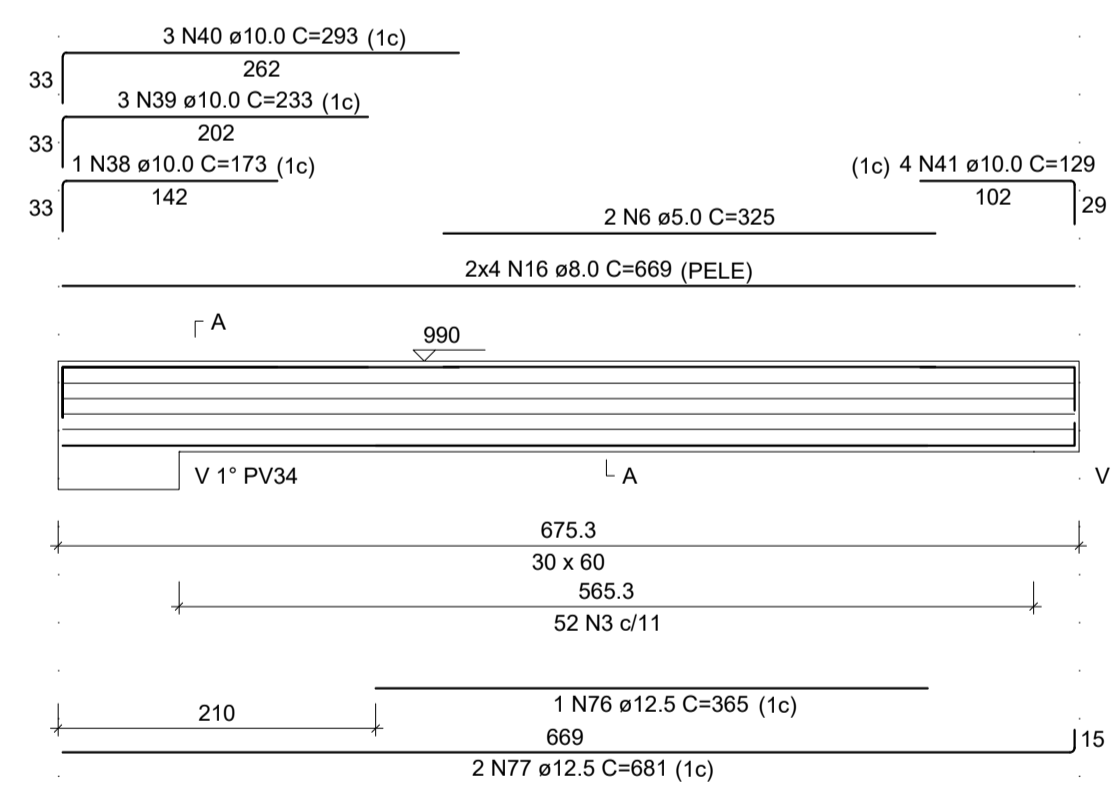
V 1° PV4
ESC 1:50



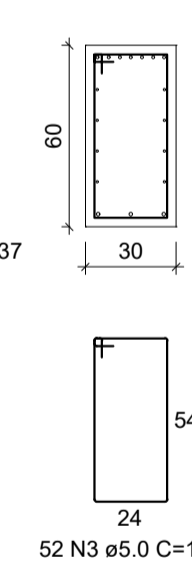
SEÇÃO A-A
ESC 1:25



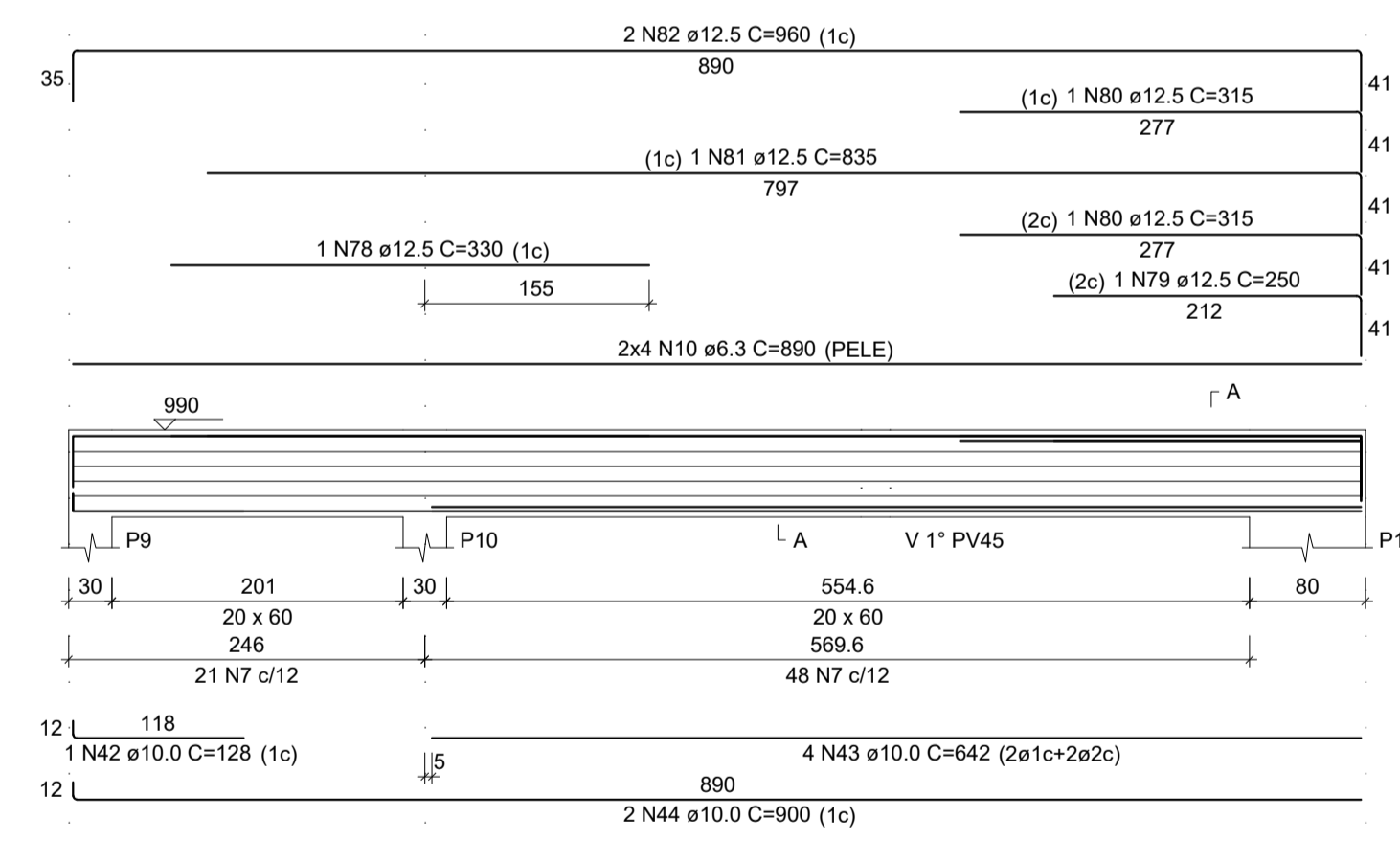
V 1° PV5
ESC 1:50



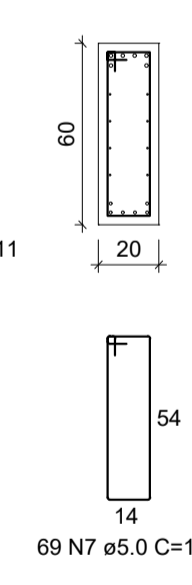
SEÇÃO A-A
ESC 1:25



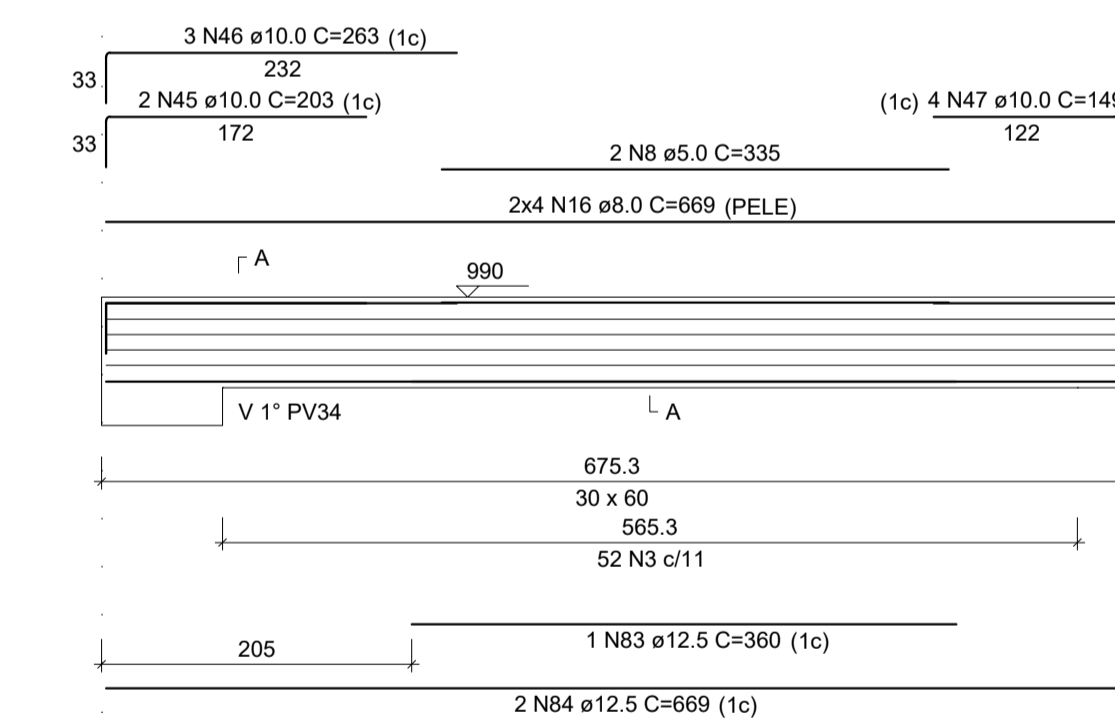
V 1° PV6
ESC 1:50



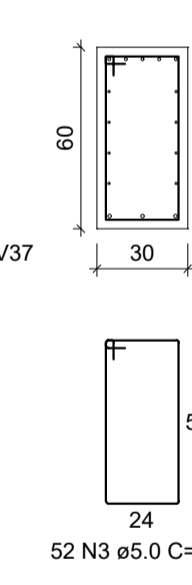
SEÇÃO A-A
ESC 1:25



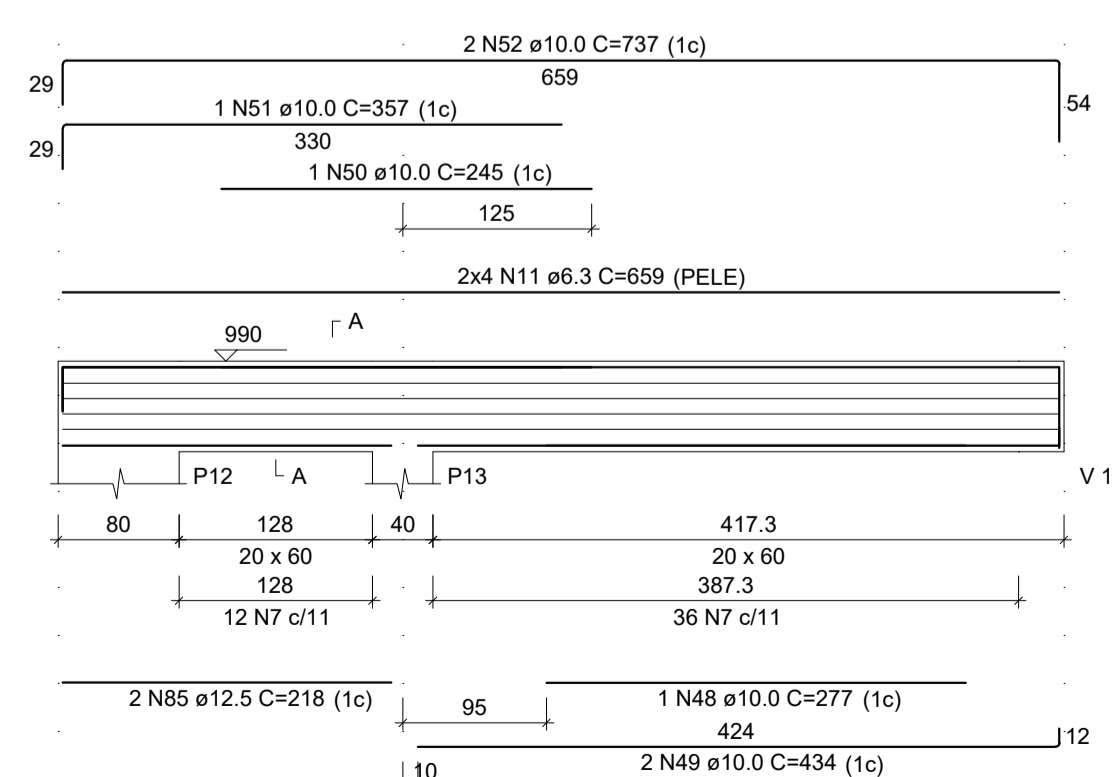
V 1° PV7
ESC 1:50



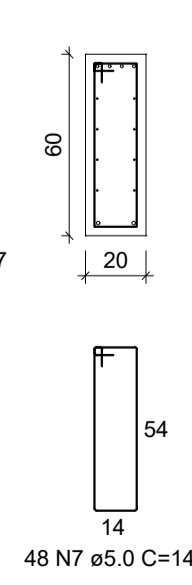
SEÇÃO A-A
ESC 1:25



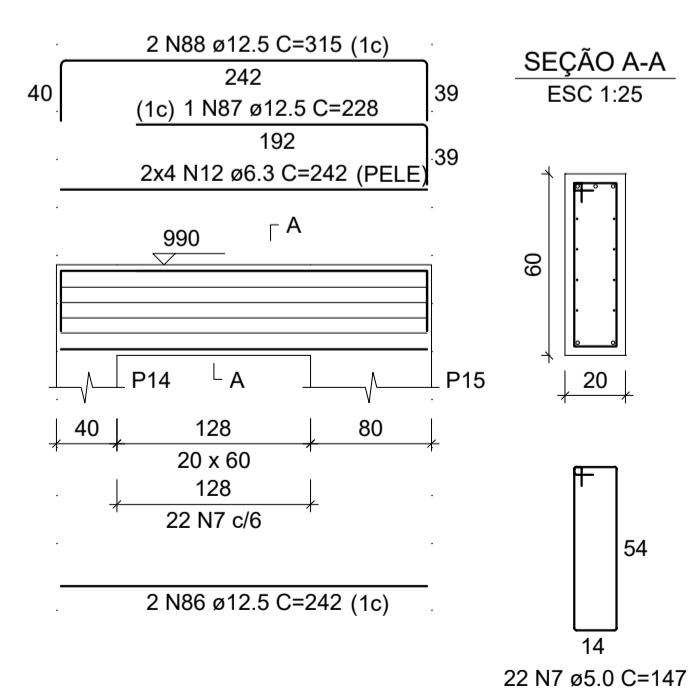
V 1° PV8
ESC 1:50



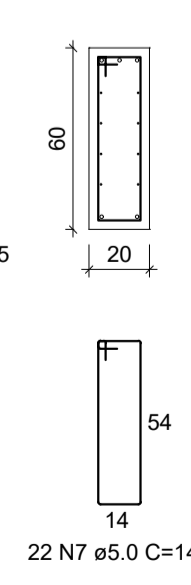
SEÇÃO A-A
ESC 1:25



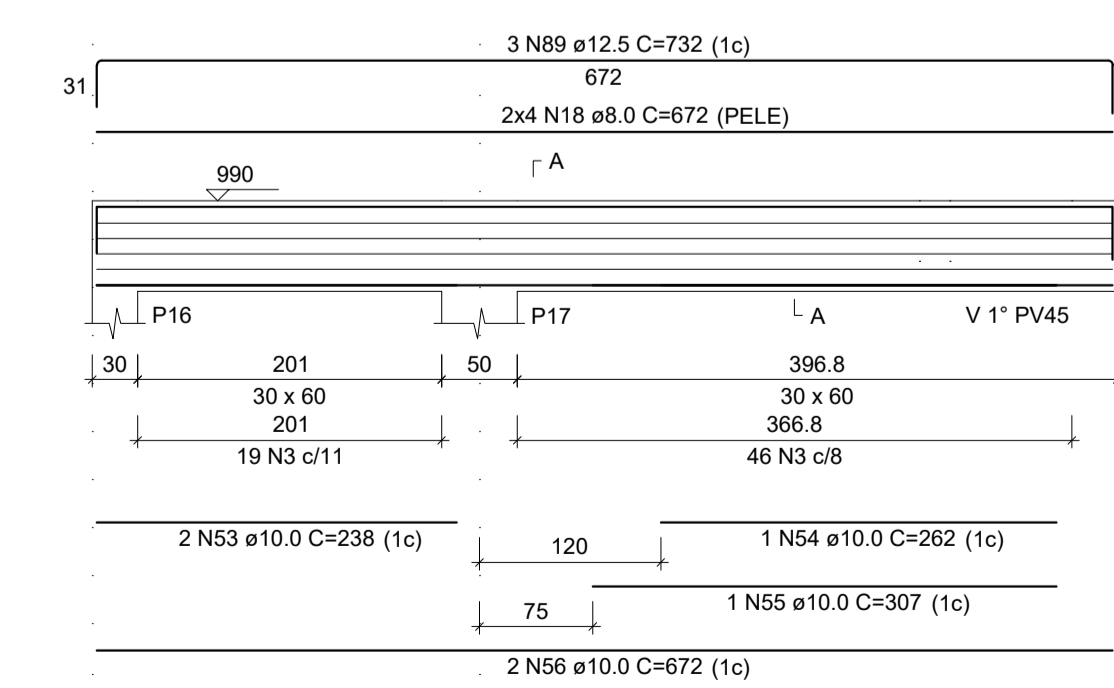
V 1° PV9
ESC 1:50



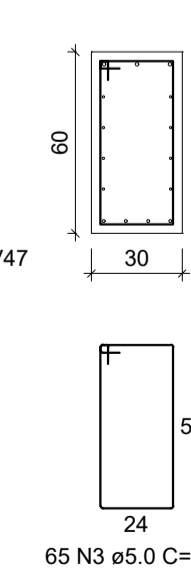
SEÇÃO A-A
ESC 1:25



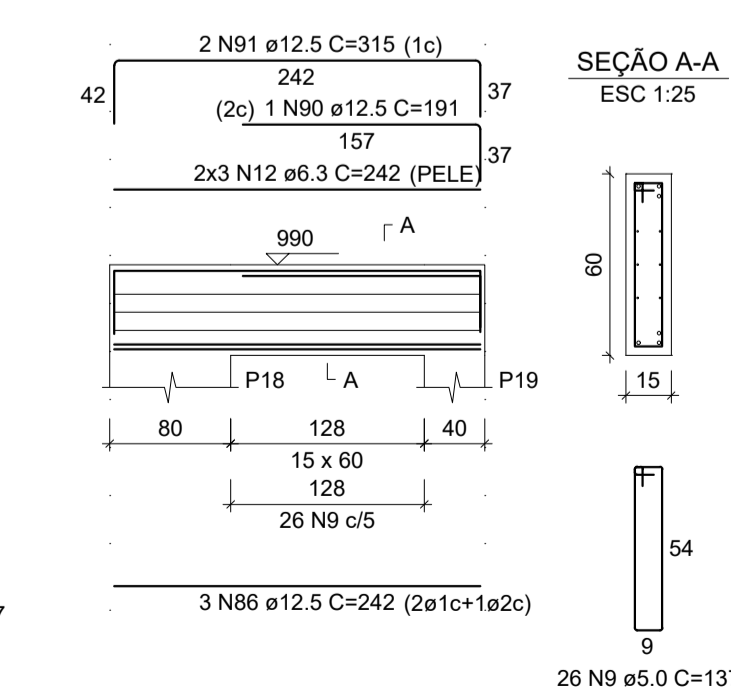
V 1° PV10
ESC 1:50



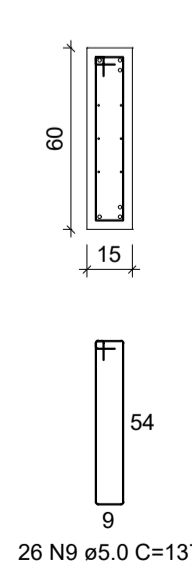
SEÇÃO A-A
ESC 1:25



V 1° PV11
ESC 1:50



SEÇÃO A-A
ESC 1:25



RELAÇÃO DO AÇO

ACO	N	DIAM (mm)	QUANT	C.UNIT (cm)	C.TOTAL (cm)
CA80	1	5.0	136	217	29512
	2	5.0	2	223	446
	3	5.0	445	167	74315
	4	5.0	2	397	794
	5	5.0	2	230	460
	6	5.0	2	325	650
	7	5.0	139	147	20433
	8	5.0	2	335	670
	9	5.0	26	137	3562
	10	6.3	8	890	7120
	11	6.3	8	659	5272
	12	6.3	14	242	3388
	13	8.0	20	1200	24000
	14	8.0	12	409	4908
	15	8.0	8	900	7200
	16	8.0	24	669	16056
	17	8.0	8	399	3192
	18	8.0	8	672	5376
	19	10.0	2	375	750
	20	10.0	1	214	214
	21	10.0	1	301	301
	22	10.0	2	910	1820
	23	10.0	2	220	440
	24	10.0	2	434	868
	25	10.0	2	958	1916
	26	10.0	1	315	315
	27	10.0	3	679	2037
	28	10.0	2	148	296
	29	10.0	4	340	1360
	30	10.0	1	652	652
	31	10.0	2	929	1858
	32	10.0	2	240	480
	33	10.0	2	471	942
	34	10.0	2	751	1502
	35	10.0	1	167	167
	36	10.0	3	232	696
	37	10.0	3	292	876
	38	10.0	1	173	173
	39	10.0	3	233	699
	40	10.0	3	293	879
	41	10.0	4	129	516
	42	10.0	1	128	128
	43	10.0	4	642	2568
	44	10.0	2	900	1800
	45	10.0	2	203	406
	46	10.0	3	263	789
	47	10.0	4	149	596
	48	10.0	1	277	277
	49	10.0	2	434	868
	50	10.0	1	245	245
	51	10.0	1	357	357
	52	10.0	1	737	1474
	53	10.0	2	238	476
	54	10.0	1	262	262
	55	10.0	1	307	307
	56	10.0	1	672	1344
	57	12.5	3	891	2673
	58	12.5	1	332	332
	59	12.5	2	659	1318
	60	12.5	1	214	214
	61	12.5	2	319	638
	62	12.5	1	355	355
	63	12.5	1	511	511
	64	12.5	1	224	224
	65	12.5	2	289	578
	66	12.5	2	1107	2214
	67	12.5	1	206	206
	68	12.5	2	271	542
	69	12.5	2	321	642
	70	12.5	1	355	355
	71	12.5	2	699	1398
	72	12.5	1	245	245
	73	12.5	2	249	498
	74	12.5	2	309	618
	75	12.5	2	369	738
	76	12.5	1	365	365
	77	12.5	2	681	1362
	78	12.5	1	330	330
	79	12.5	1	250	250
	80	12.5	2	315	630
	81	12.5	1	835	835
	82	12.5	2	960	1920
	83	12.5	1	360	360
	84	12.5	2	669	1338
	85	12.5	2	218	436
	86	12.5	5	242	1210
	87	12.5	1	228	228
	88	12.5	2	315	630
	89	12.5	3	732	2196
	90	12.5	1	191	191
	91	12.5	2	315	630

RESUMO DO AÇO

ACO	DIAM (mm)	C.TOTAL (m)	PESO + 10% (kg)
CA50	6.3	157.8	42.5
	8.0	607.3	263.6
	10.0	316.5	214.7
	12.5	272.1	288.3
	5.0	1308.4	221.8
PESO TOTAL (kg)			
CA50		809.1	
CA60		221.8	

Volume de concreto (C-30) = 13.84 m³
Área de forma = 99.17 m²

CONSTRUTORA STONE CONSTRUTORA STONE
Tudo pelo gol do cliente!

OBRA: NÚCLEO INFANTIL CANTINHO DO CÉU

ÁREA EXISTENTE: 0,00 m²

ÁREA A CONSTRUIR: 1.199,17 m²

LOCAL: BOM JESUS DO AMPARO - MG

PROPRIETÁRIO: PREFEITURA MUNICIPAL DE BOM JESUS DO AMPARO-MG
CNPJ: 18.317.693/0001-06

RESP. TÉCNICO - ENGENHEIRO CIVIL: CLAUDIONOR RODRIGUES (STONE) CREA-MG 347/119

CONTEÚDO: VIGAS 1° PV

PROJETO: PROJETO ESTRUTURAL

ESCALA: INDICADA

DESENHISTA: STONE

DATA: FEV/2023

FOLHA: 45/66

DIREITOS AUTORAIS RESERVADOS. PROIBIDA A REPRODUÇÃO TOTAL OU PARCIAL.