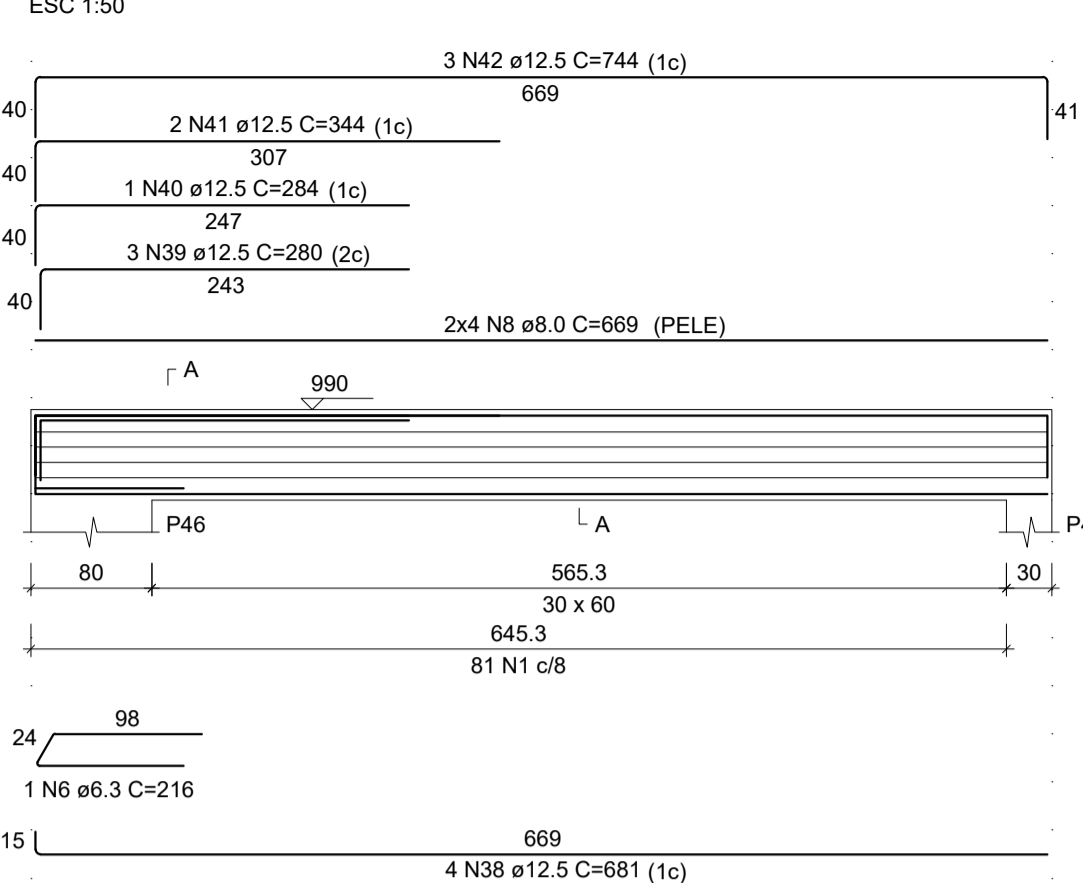
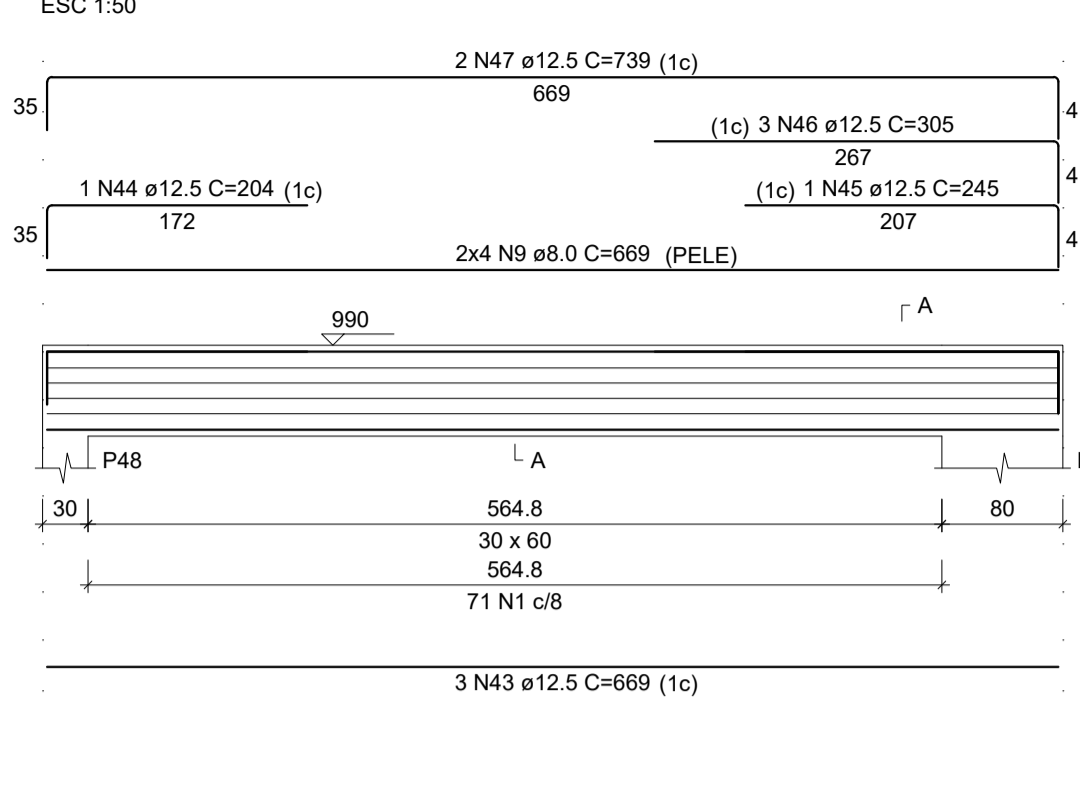


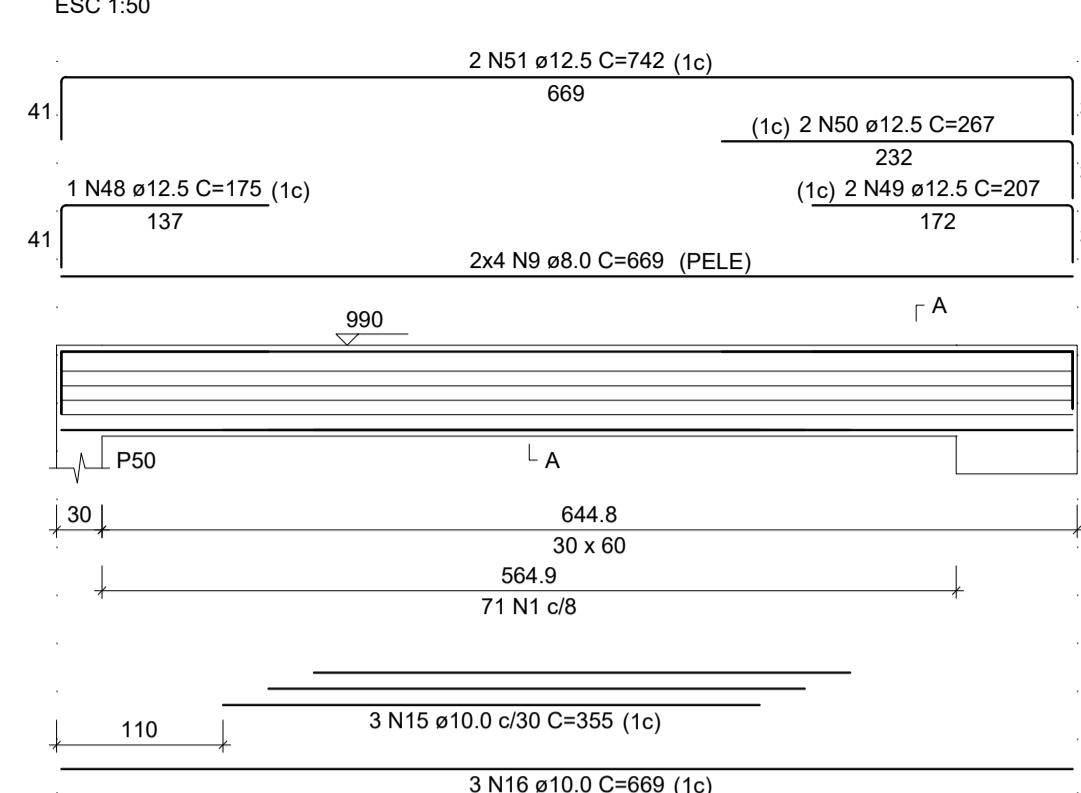
V 1° PV24



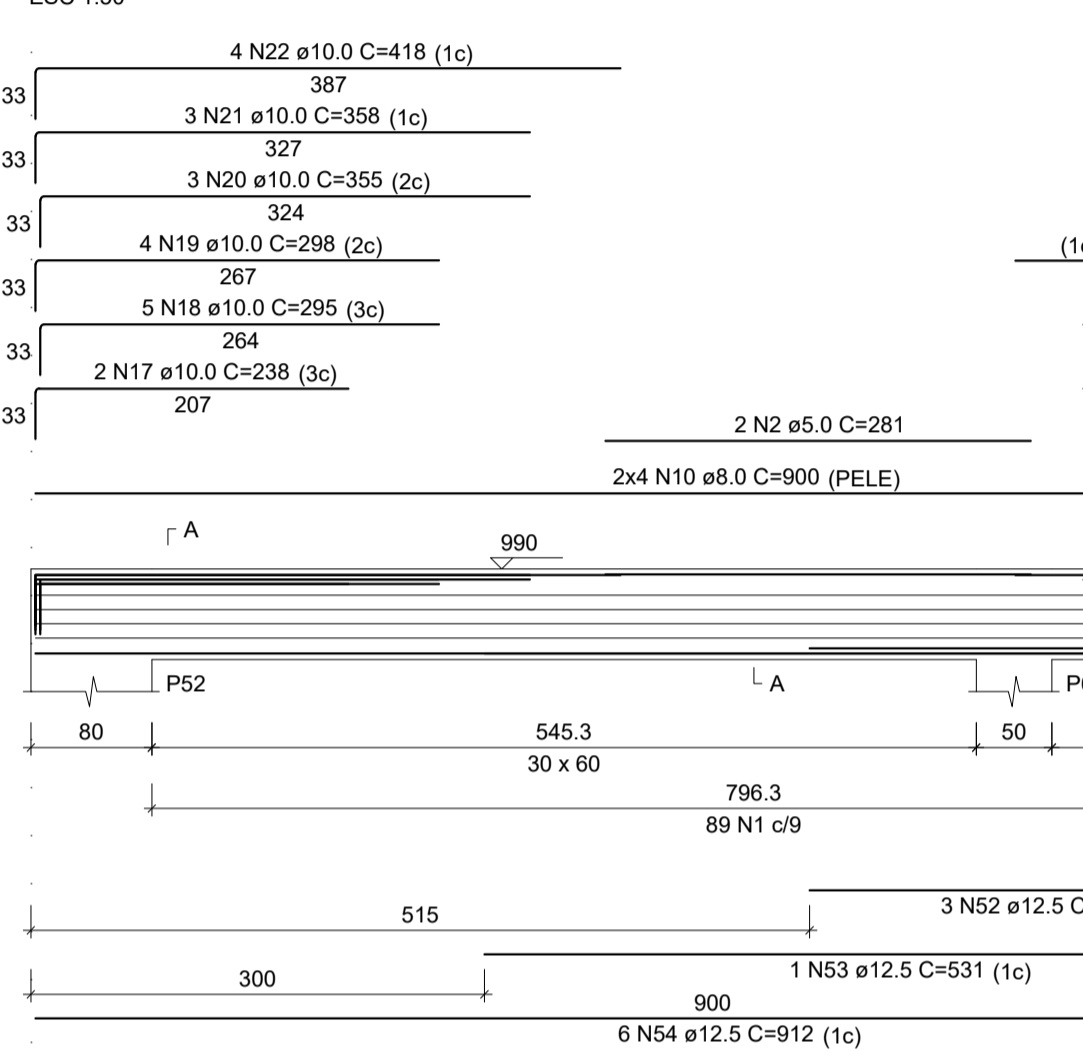
V 1° PV25



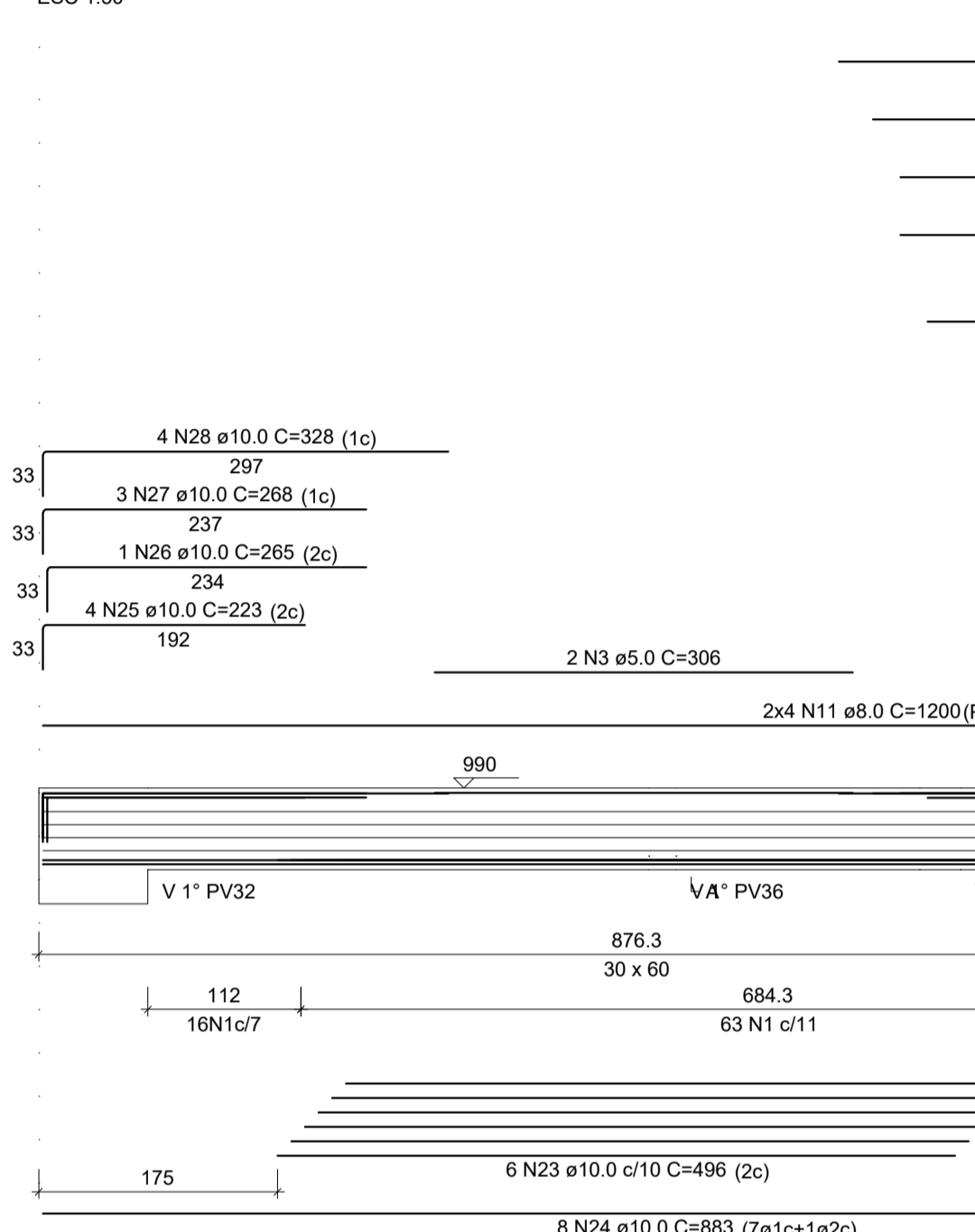
V 1° PV26



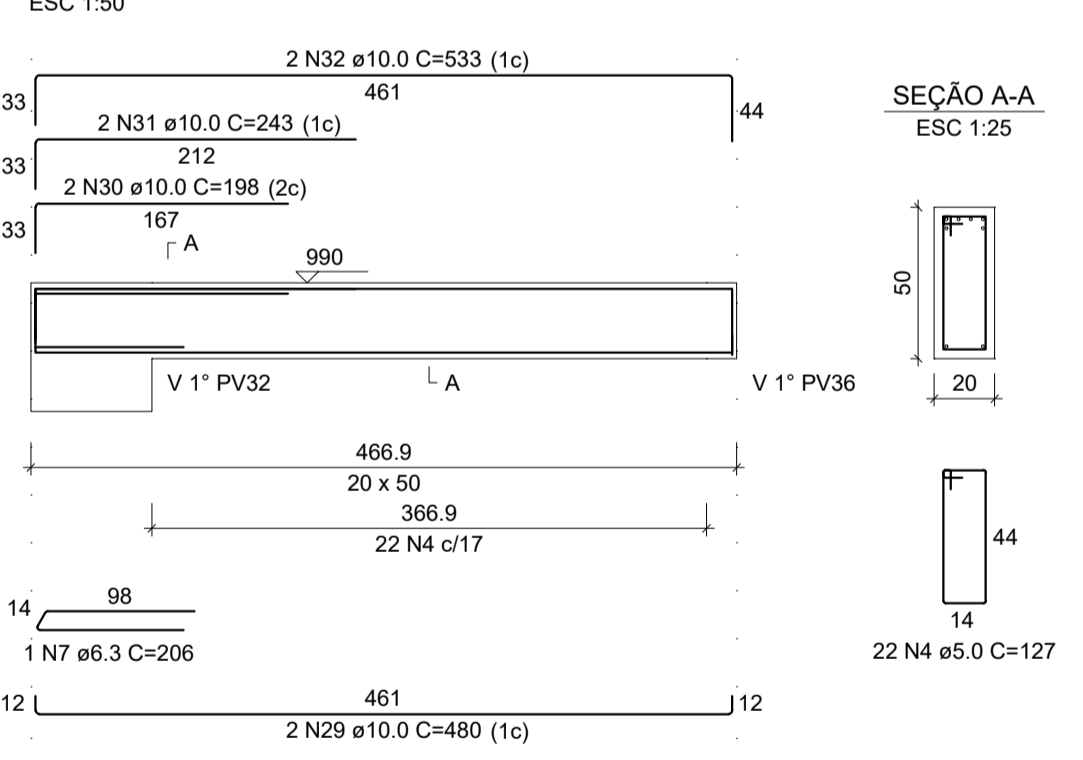
V 1° PV27



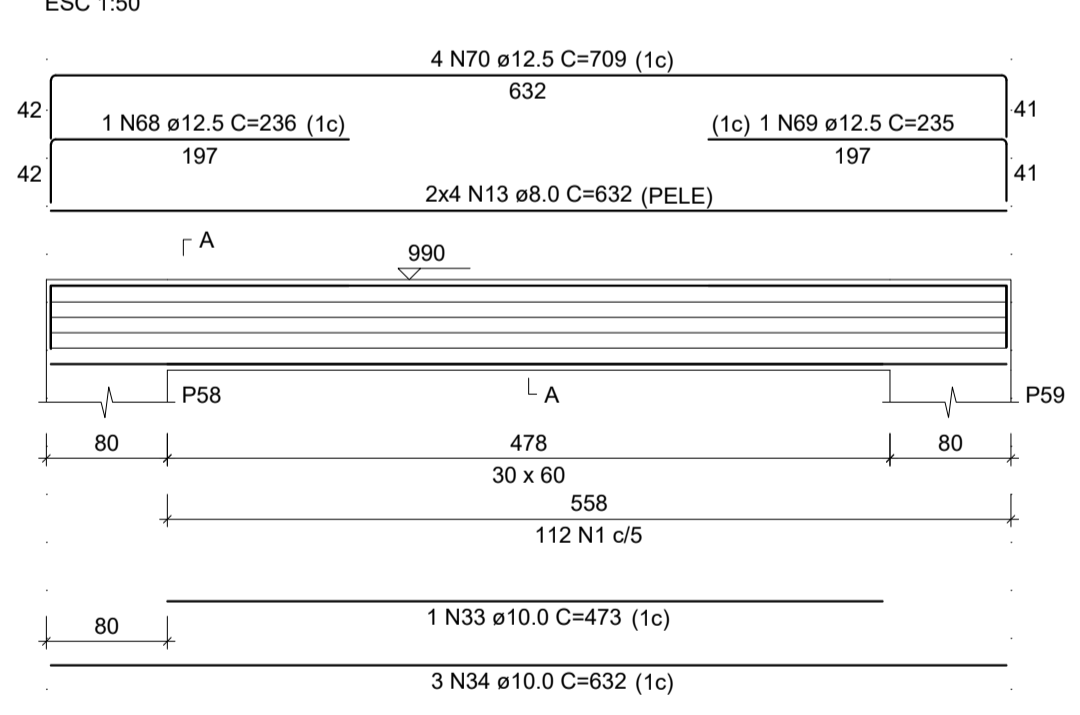
V 1° PV28



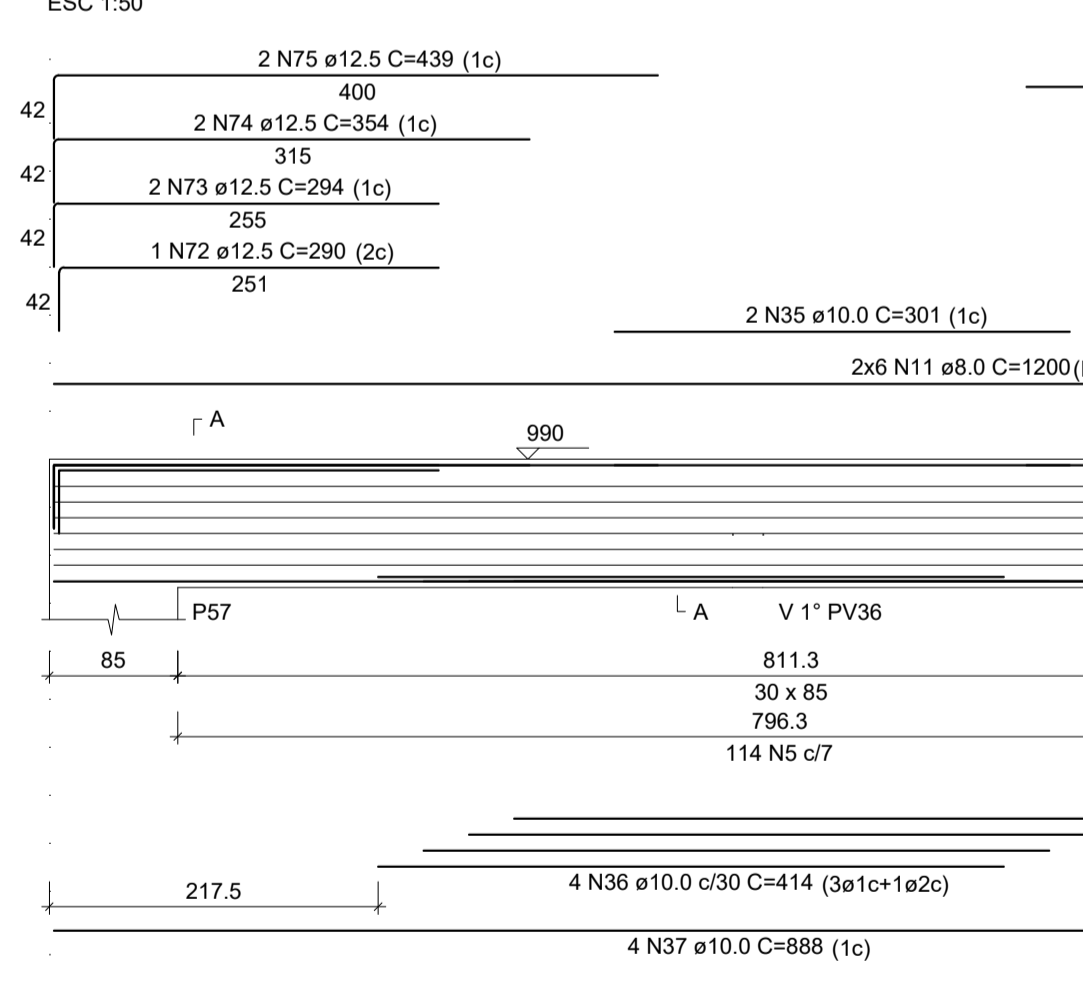
V 1° PV29



V 1° PV30



V 1° PV31



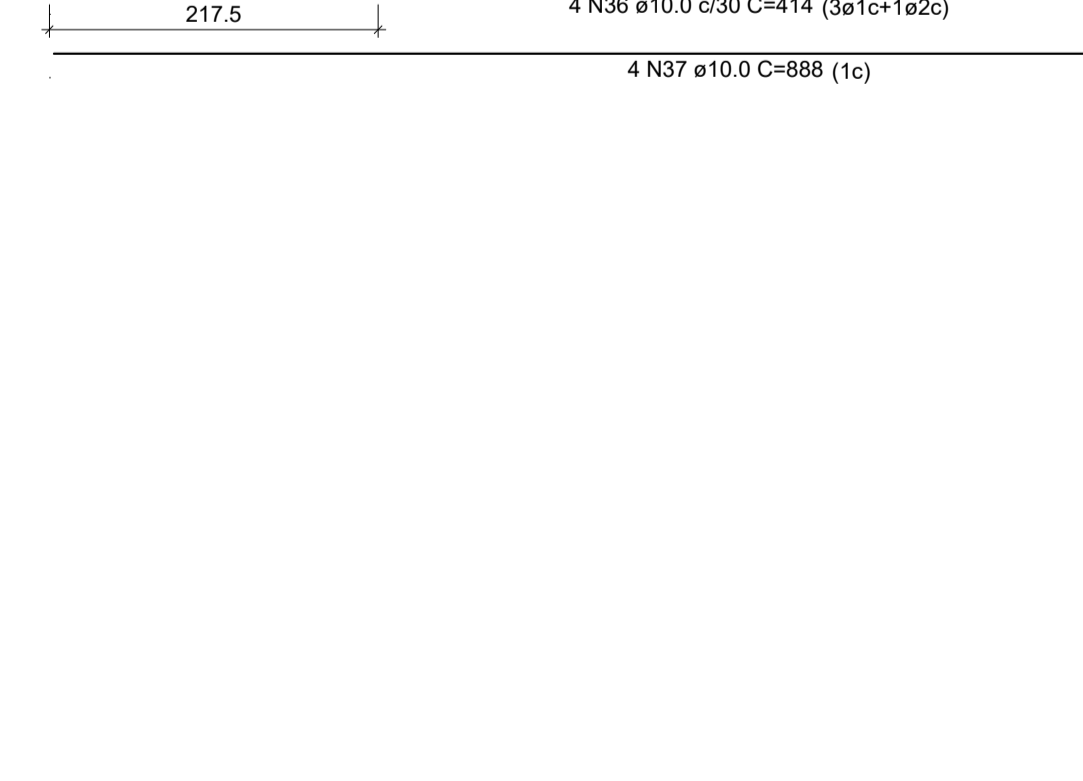
V 1° PV29



V 1° PV30



V 1° PV31



RELAÇÃO DO AÇO

AÇO	N	DIAM (mm)	QUANT	C.UNIT (cm)	C.TOTAL (cm)
CA60	1	5.0	632	167	105544
	2	5.0	2	281	562
	3	5.0	2	306	612
	4	5.0	22	127	2794
	5	5.0	166	217	36022
	6	6.3	1	216	216
	7	6.3	1	206	206
	8	8.0	8	669	5352
	9	8.0	16	669	10704
	10	8.0	8	900	7200
	11	8.0	20	1200	24000
	12	8.0	8	399	3192
	13	8.0	8	632	5056
	14	8.0	12	409	4908
	15	10.0	3	355	1065
	16	10.0	3	669	2007
	17	10.0	2	298	476
	18	10.0	5	295	1475
	19	10.0	4	298	1192
	20	10.0	3	355	1065
	21	10.0	3	355	1074
	22	10.0	4	418	1672
	23	10.0	6	496	2976
	24	10.0	8	883	7064
	25	10.0	4	223	892
	26	10.0	1	265	265
	27	10.0	1	268	268
	28	10.0	4	328	1312
	29	10.0	2	480	960
	30	10.0	2	198	396
	31	10.0	1	175	175
	32	10.0	2	533	1066
	33	10.0	1	473	473
	34	10.0	2	632	1264
	35	10.0	2	301	602
	36	10.0	4	414	1656
	37	10.0	4	805	3220
	38	12.5	4	681	2724
	39	12.5	3	280	840
	40	12.5	1	284	284
	41	12.5	2	344	688
	42	12.5	3	744	2332
	43	12.5	3	669	2007
	44	12.5	1	204	204
	45	12.5	1	245	245
	46	12.5	3	305	915
	47	12.5	2	739	1478
	48	12.5	1	175	175
	49	12.5	2	207	414
	50	12.5	2	267	534
	51	12.5	2	742	1484
	52	12.5	3	301	903
	53	12.5	1	531	531
	54	12.5	6	912	5472
	55	12.5	1	242	242
	56	12.5	4	246	984
	57	12.5	2	291	582
	58	12.5	1	325	325
	59	12.5	2	654	1308
	60	12.5	2	315	630
	61	12.5	1	335	335
	62	12.5	2	380	760
	63	12.5	2	460	920
	64	12.5	1	520	520
	65	12.5	1	951	951
	66	12.5	1	971	971
	67	12.5	2	996	1992
	68	12.5	1	236	236
	69	12.5	1	235	235
	70	12.5	4	709	2836
	71	12.5	3	659	1977
	72	12.5	1	290	290
	73	12.5	2	294	588
	74	12.5	2	354	708
	75	12.5	2	439	878
	76	12.5	3	370	1110
	77	12.5	1	911	911
	78	12.5	2	951	1902

RESUMO DO AÇO

AÇO	DIAM (mm)	C.TOTAL (m)	PESO + 10% (kg)
CA50	6.3	4.2	1.1
	8.0	604.1	262.2
	10.0	344.3	233.5
	12.5	433.2	459.1
CA60	5.0	1455.3	246.7

PESO TOTAL (kg)	
CA50	955.9
CA60	246.7

Volume de concreto (C-30) = 11.82 m³
Área de forma = 81.57 m²

CONSTRUTORA STONE
OPF 25.041.063/0001-11

OBRA:
NÚCLEO INFANTIL CANTINHO DO CÉU

LOCAL:
BOM JESUS DO AMPARO - MG

PROPRIETÁRIO:
PREFEITURA MUNICIPAL DE BOM JESUS DO AMPARO-MG
CNPJ: 18.317.693/0001-06

CONTEÚDO:
VIGAS 1º PV

ESCALA:
INDICADA

ÁREA EXISTENTE:
0,00 m²

ÁREA A CONSTRUIR:
1.199,17 m²

EQUIPE TÉCNICA:
CLAUDIONOR RODRIGUES
Eng. Civil - CRG 165.439/0

RESP. TÉCNICO - ENGENHEIRO CIVIL:
CLAUDIONOR RODRIGUES
(STONE) CREA -MG 347/119

PROJETO:
PROJETO ESTRUTURAL

DESENHISTA:
STONE

DATA:
FEV/2023

FOLHA:
47/66

DIREITOS AUTORAIS RESERVADOS. PROIBIDA A REPRODUÇÃO TOTAL OU PARCIAL.