

RELAÇÃO DO AÇO

VT57 VT60	VT58 VT61	VT59 VT62			
AÇO	N	DIAM (mm)	QUANT	C. UNIT (cm)	C. TOTAL (cm)
CA60	1	5.0	251	217	54467
	2	5.0	78	147	11466
	3	5.0	31	137	4247
CA50	4	6.3	16	638	10208
	5	6.3	6	458	2748
	6	6.3	6	389	2334
	7	6.3	8	379	3032
	8	8.0	12	1200	14400
	9	8.0	12	788	9456
	10	10.0	2	479	958
	11	10.0	12	638	7656
	12	10.0	2	202	404
	13	10.0	1	187	187
	14	10.0	1	247	247
	15	10.0	2	458	916
	16	10.0	1	167	167
	17	10.0	2	217	217
	18	10.0	2	398	796
	19	10.0	1	240	240
	20	10.0	2	432	864
	21	10.0	3	379	1137
	22	10.0	3	398	1194
	23	12.5	1	502	502
	24	12.5	2	1200	2400
	25	12.5	2	240	480
	26	12.5	3	662	1986
	27	12.5	2	231	462
	28	12.5	2	306	612
	29	12.5	1	351	351
	30	12.5	1	401	401
	31	12.5	2	476	952
	32	12.5	1	335	335
	33	12.5	2	380	760
	34	12.5	1	450	450
	35	12.5	2	250	500
	36	12.5	1	925	925
	37	12.5	1	975	975
	38	12.5	1	980	980
	39	12.5	2	1075	2150
	40	12.5	2	458	916

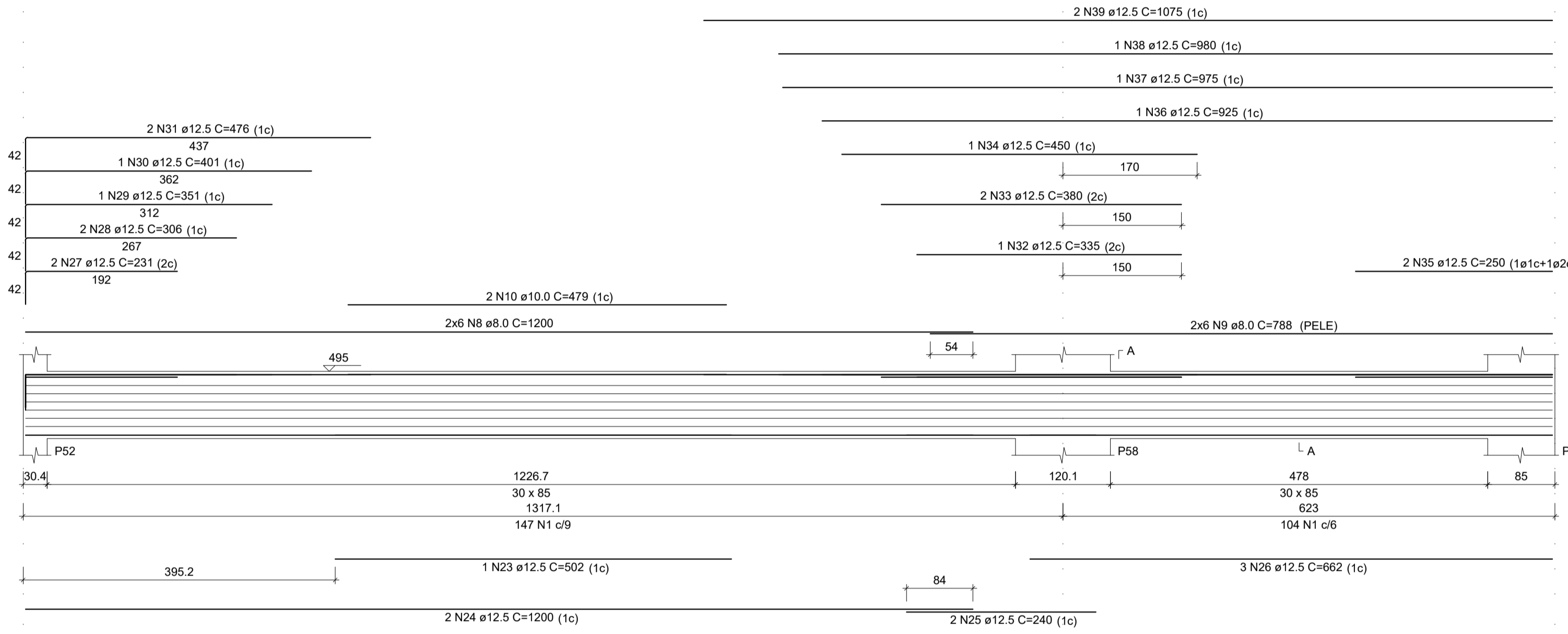
RESUMO DO AÇO

AÇO	DIAM (mm)	C. TOTAL (m)	PESO + 10% (kg)
CA50	6.3	183.2	49.3
	8.0	238.6	103.5
	10.0	149.8	101.6
CA60	12.5	161.4	171
	5.0	701.8	118

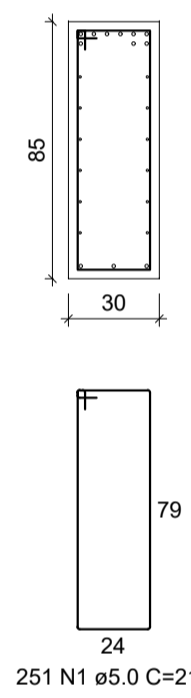
PESO TOTAL (kg)
CA50 425.5
CA60 119

Volume de concreto (C-30) = 6.55 m³
Área de forma = 58.91 m²

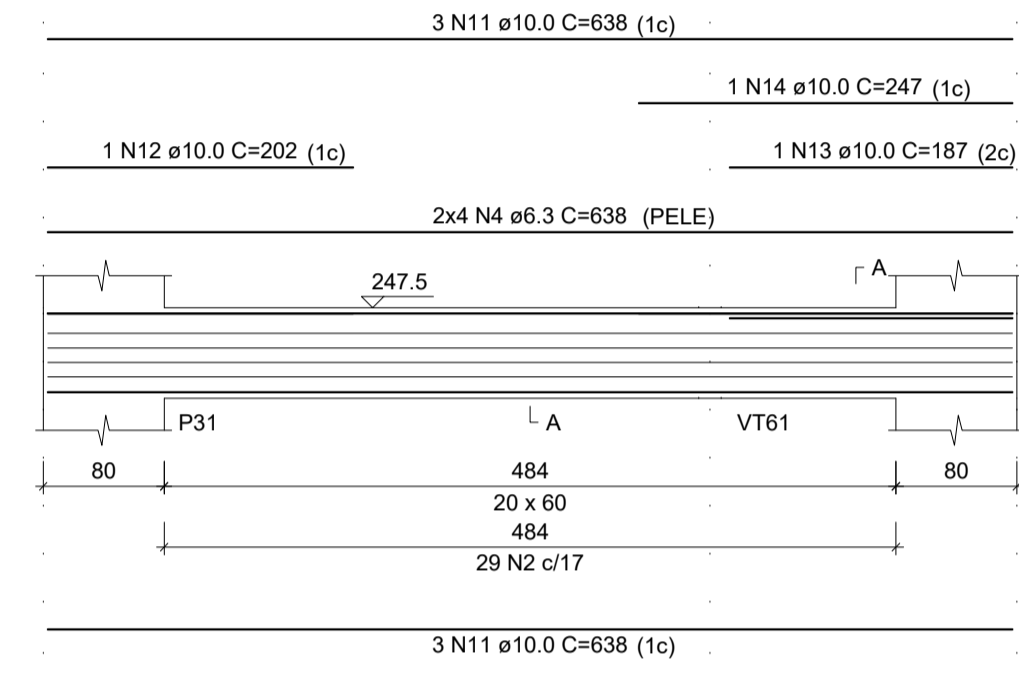
VT57
ESC 1:50



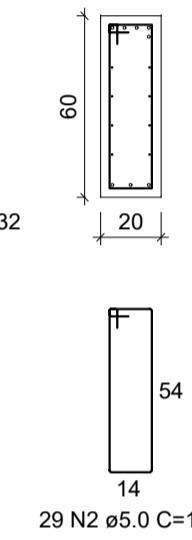
SEÇÃO A-A
ESC 1:25



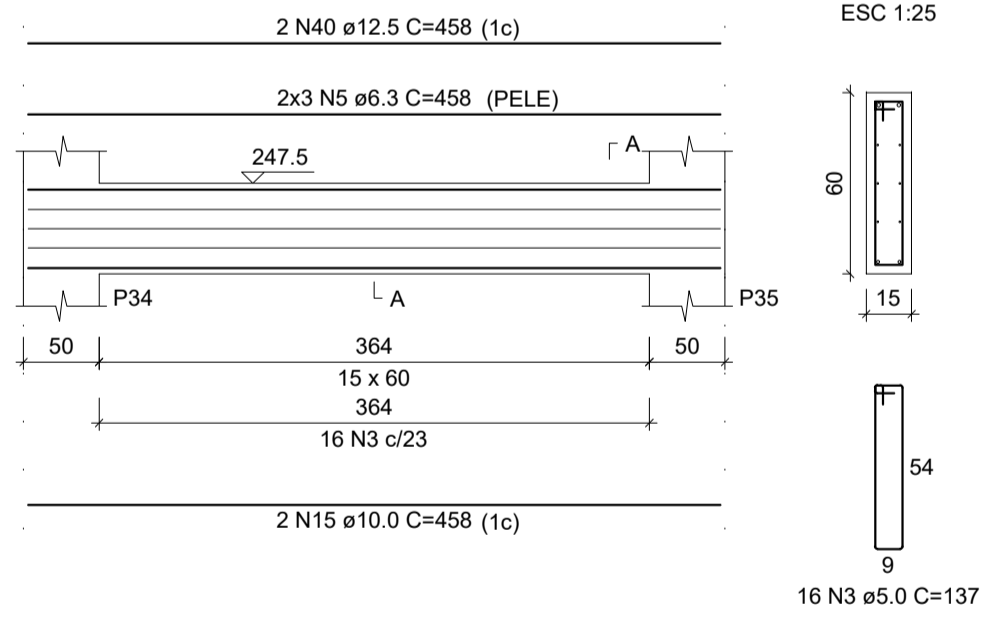
VT58
ESC 1:50



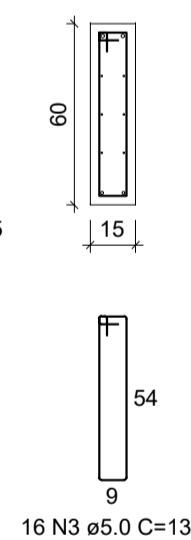
SEÇÃO A-A
ESC 1:25



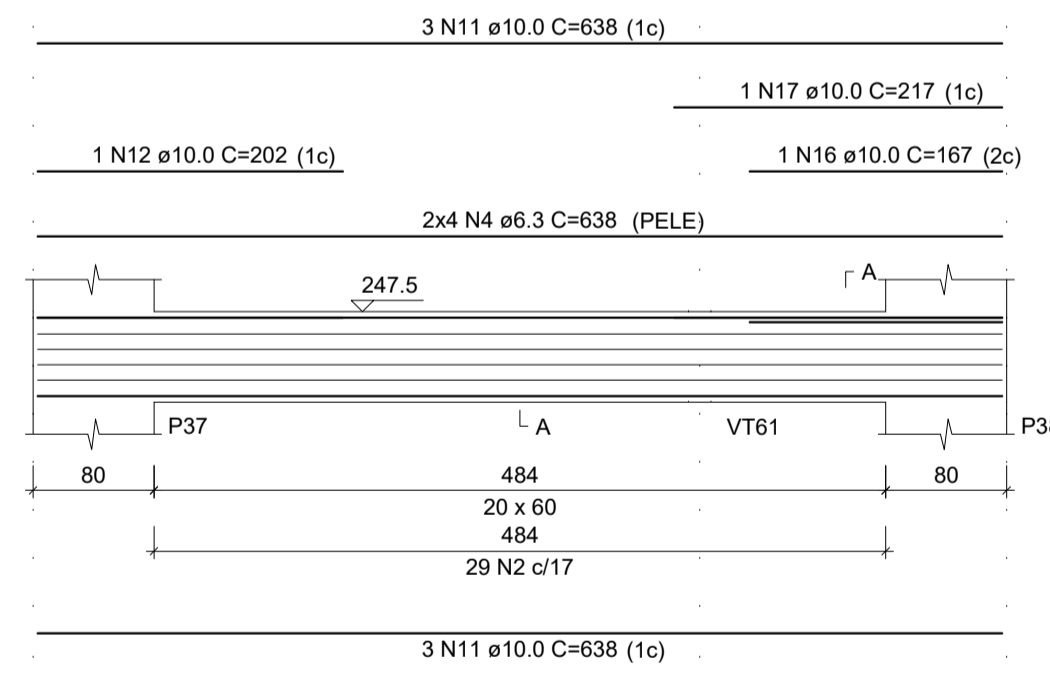
VT59
ESC 1:50



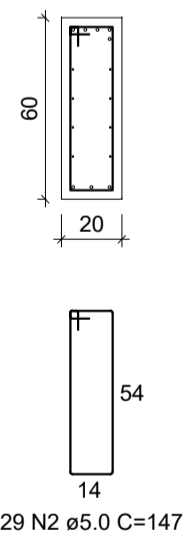
SEÇÃO A-A
ESC 1:25



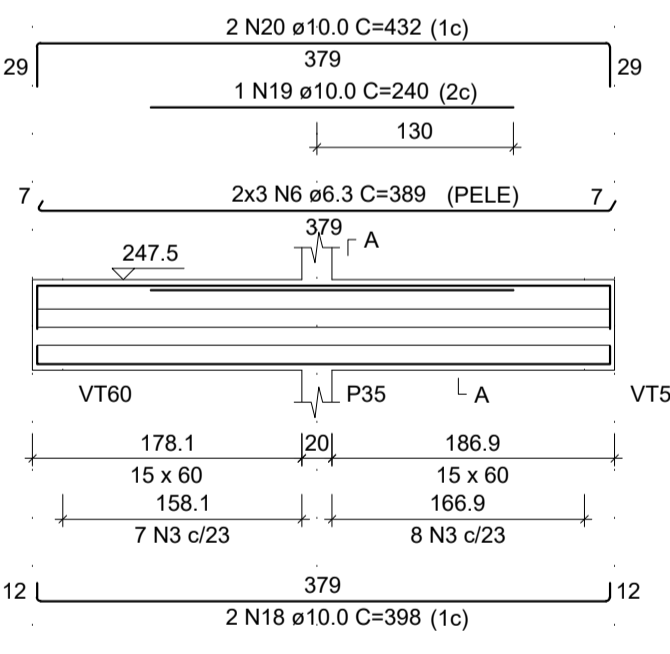
VT60
ESC 1:50



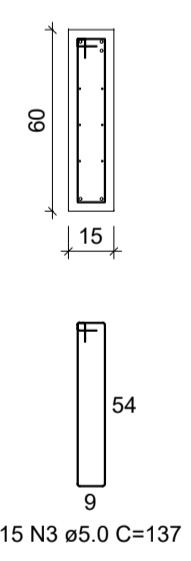
SEÇÃO A-A
ESC 1:25



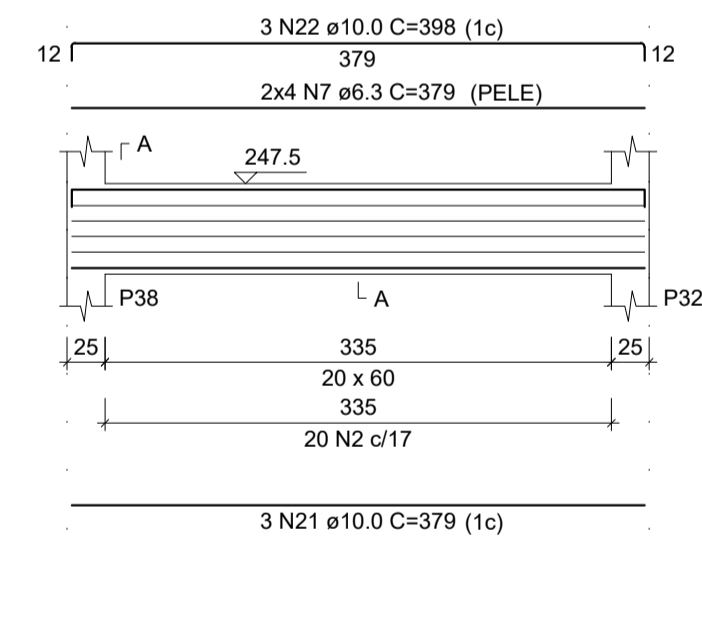
VT61
ESC 1:50



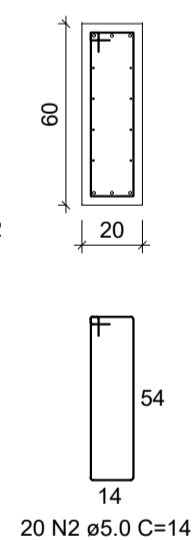
SEÇÃO A-A
ESC 1:25



VT62
ESC 1:50



SEÇÃO A-A
ESC 1:25



CONSTRUTORA STONE
Tudo pelo gol do cliente!

CONSTRUTORA STONE
Tudo pelo gol do cliente!

OBRA: NÚCLEO INFANTIL CANTINHO DO CÉU

LOCAL: BOM JESUS DO AMPARO - MG

PROPRIETARIO: PREFEITURA MUNICIPAL DE BOM JESUS DO AMPARO-MG
CNPJ: 18.317.693/0001-06

CONTEÚDO: VIGAS TÉRREO

ESCALA: INDICADA

DESENHISTA: STONE

DATA: FEV/2023

FOLHA: 38/66

ÁREA EXISTENTE: 0,00 m²

ÁREA A CONSTRUIR: 1.199,17 m²

EQUIPE TÉCNICA: CLAUDIONOR RODRIGUES
CREA-MG 165.439/0

RESP. TÉCNICO - ENGENHEIRO CIVIL: CLAUDIONOR RODRIGUES (STONE) CREA-MG 347/119

PROJETO: PROJETO ESTRUTURAL

DIREITOS AUTORAIS RESERVADOS. PROIBIDA A REPRODUÇÃO TOTAL OU PARCIAL.