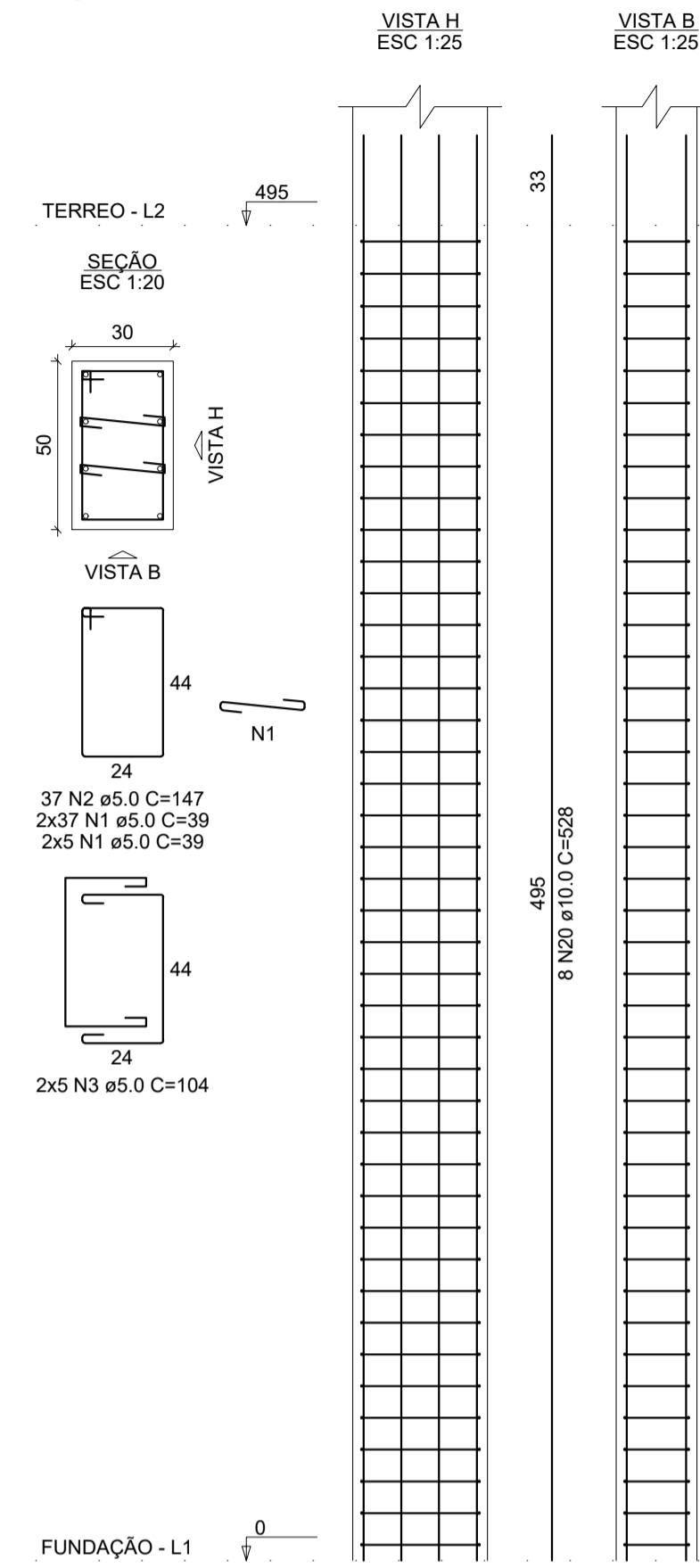
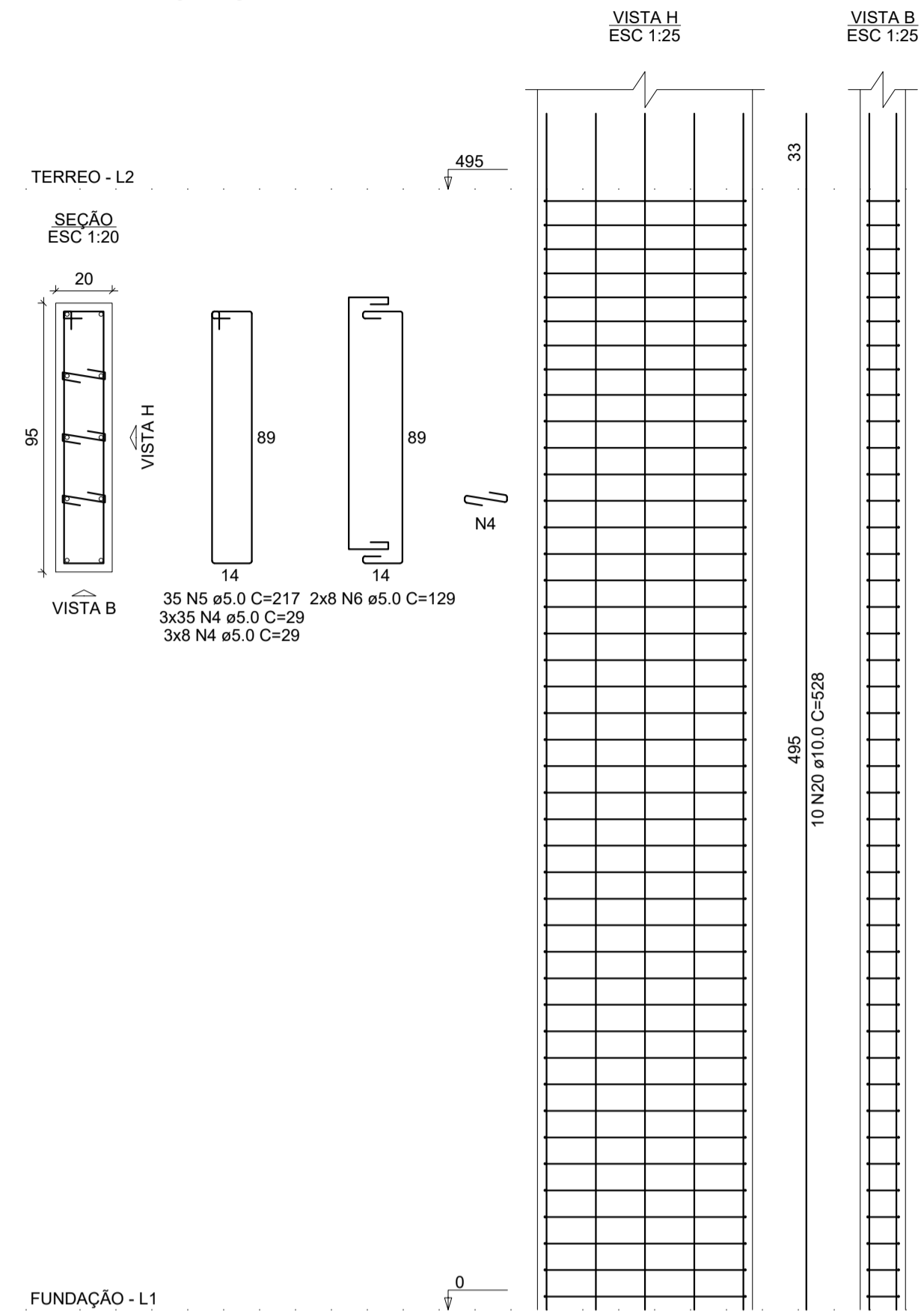


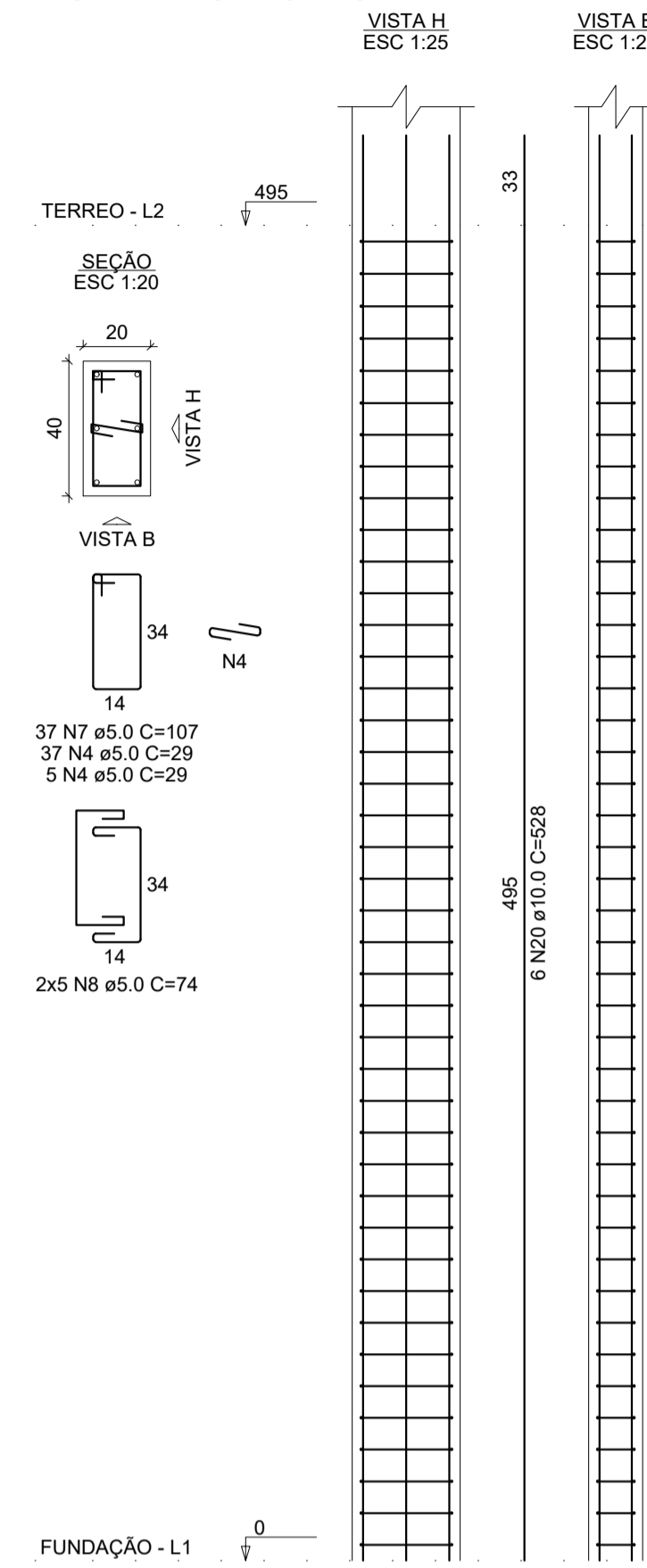
P10=P17=P27



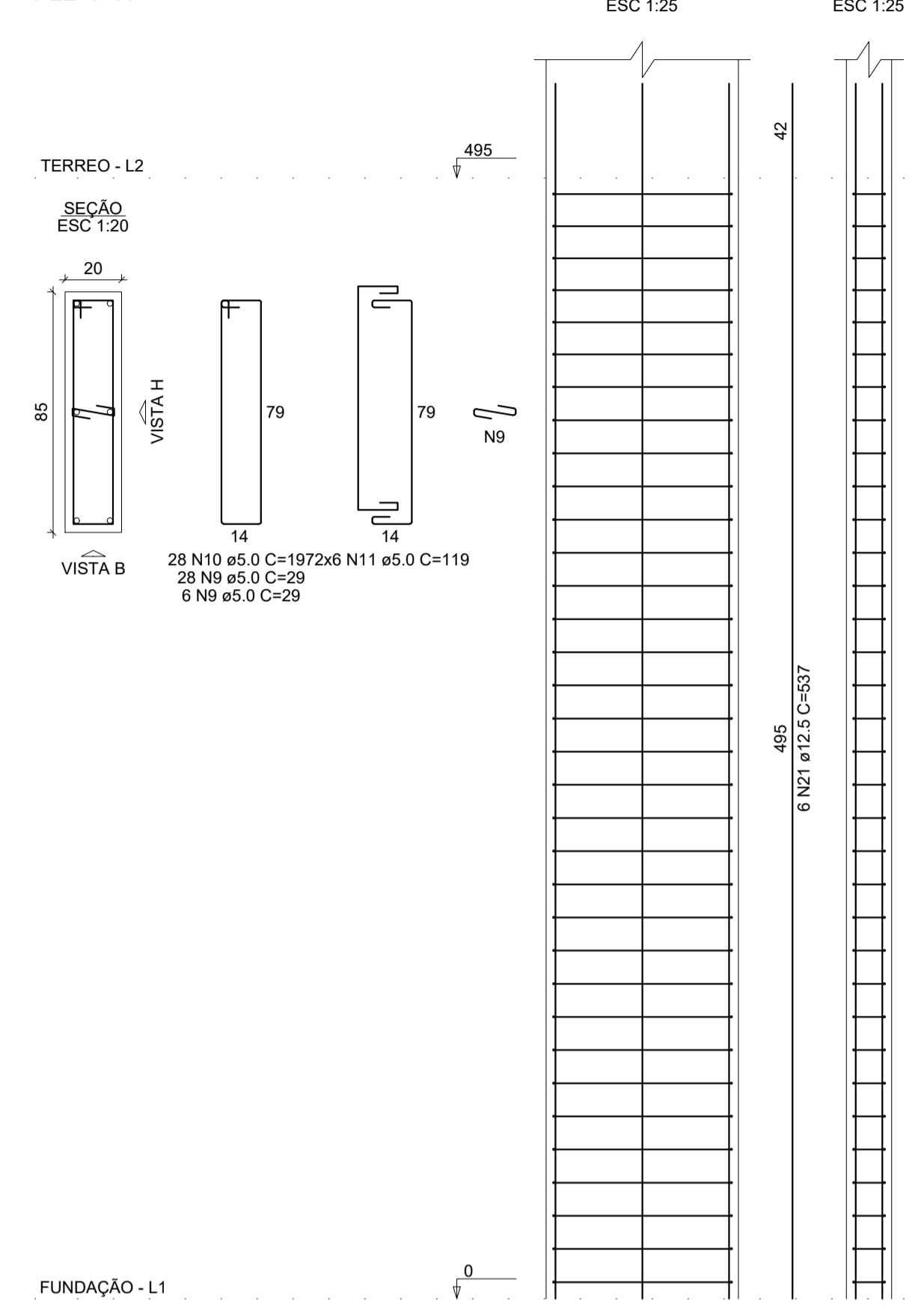
P11=P12=P15=P18=P21=P44



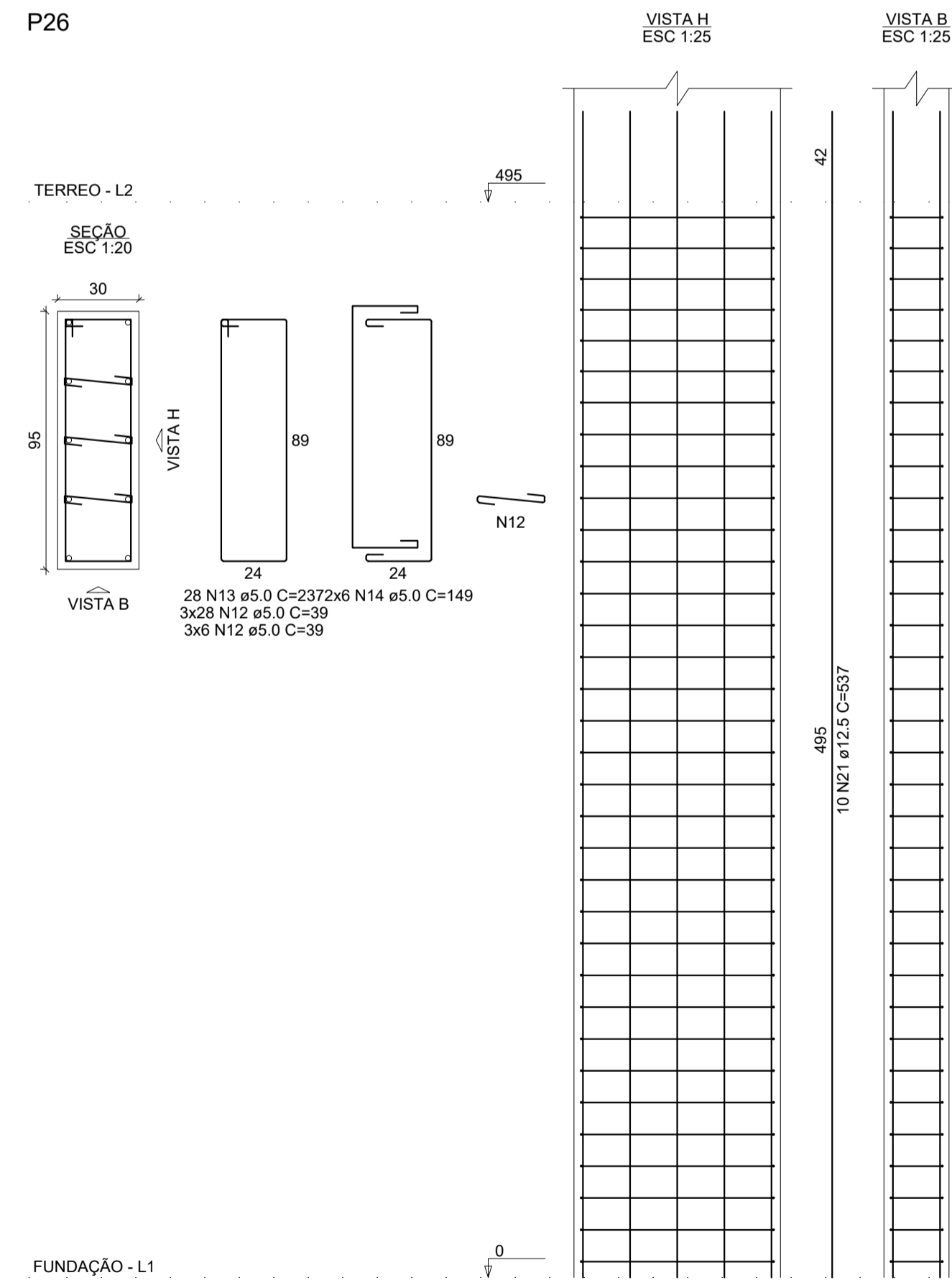
P13=P14=P19=P20=P43



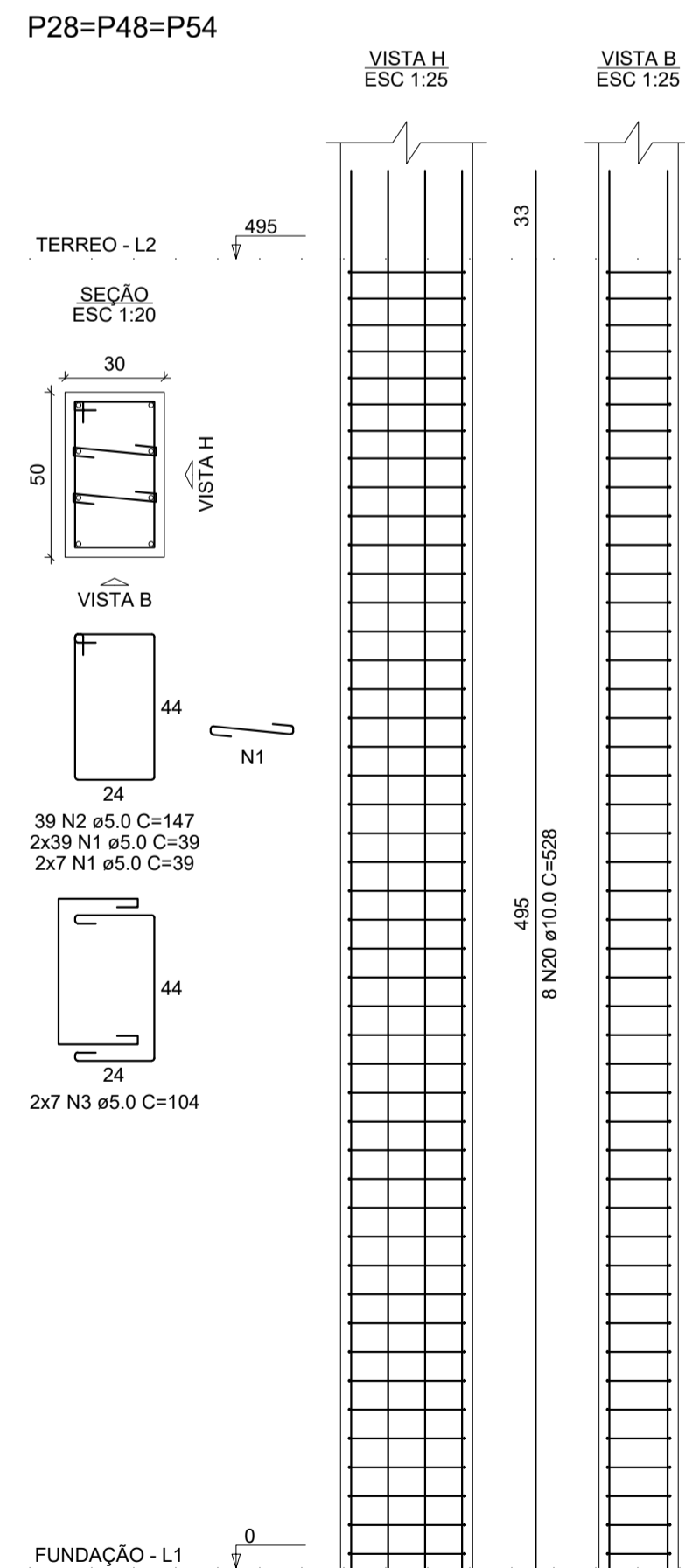
P22=P41



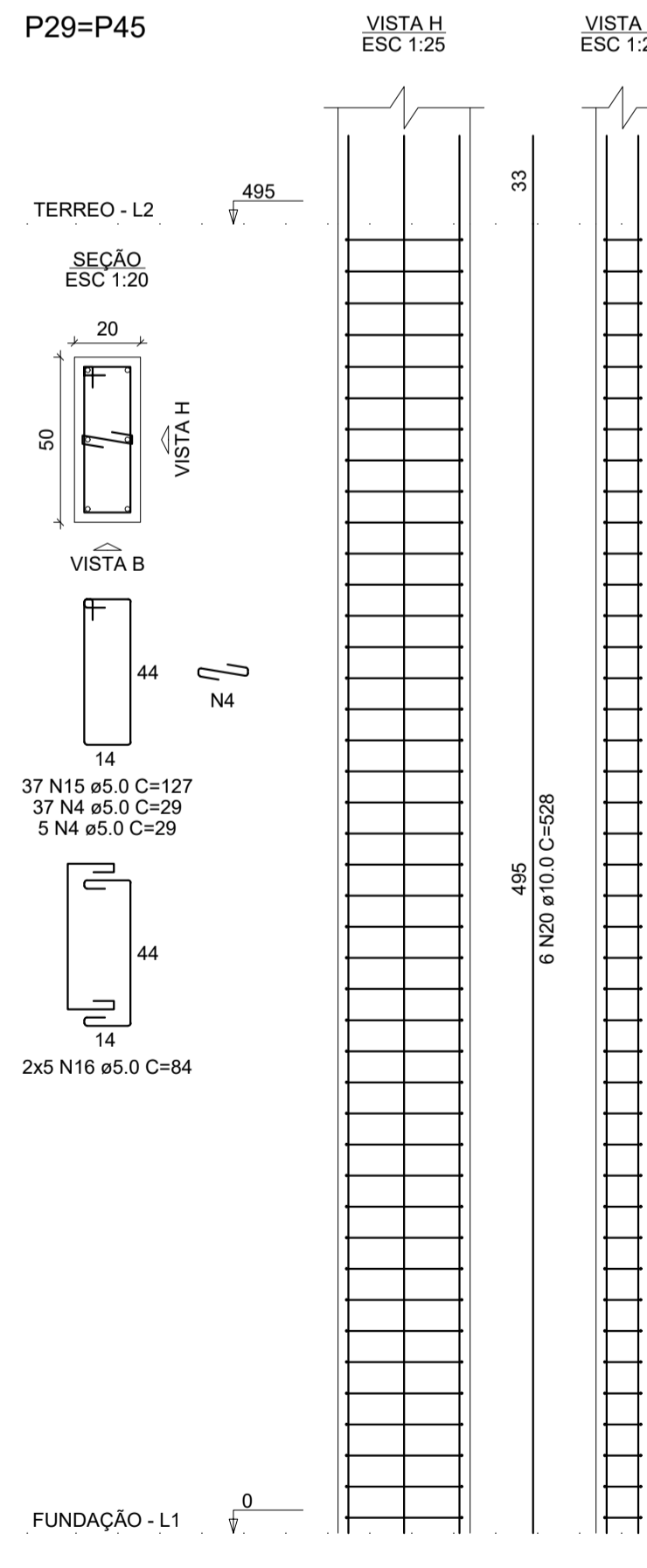
P26



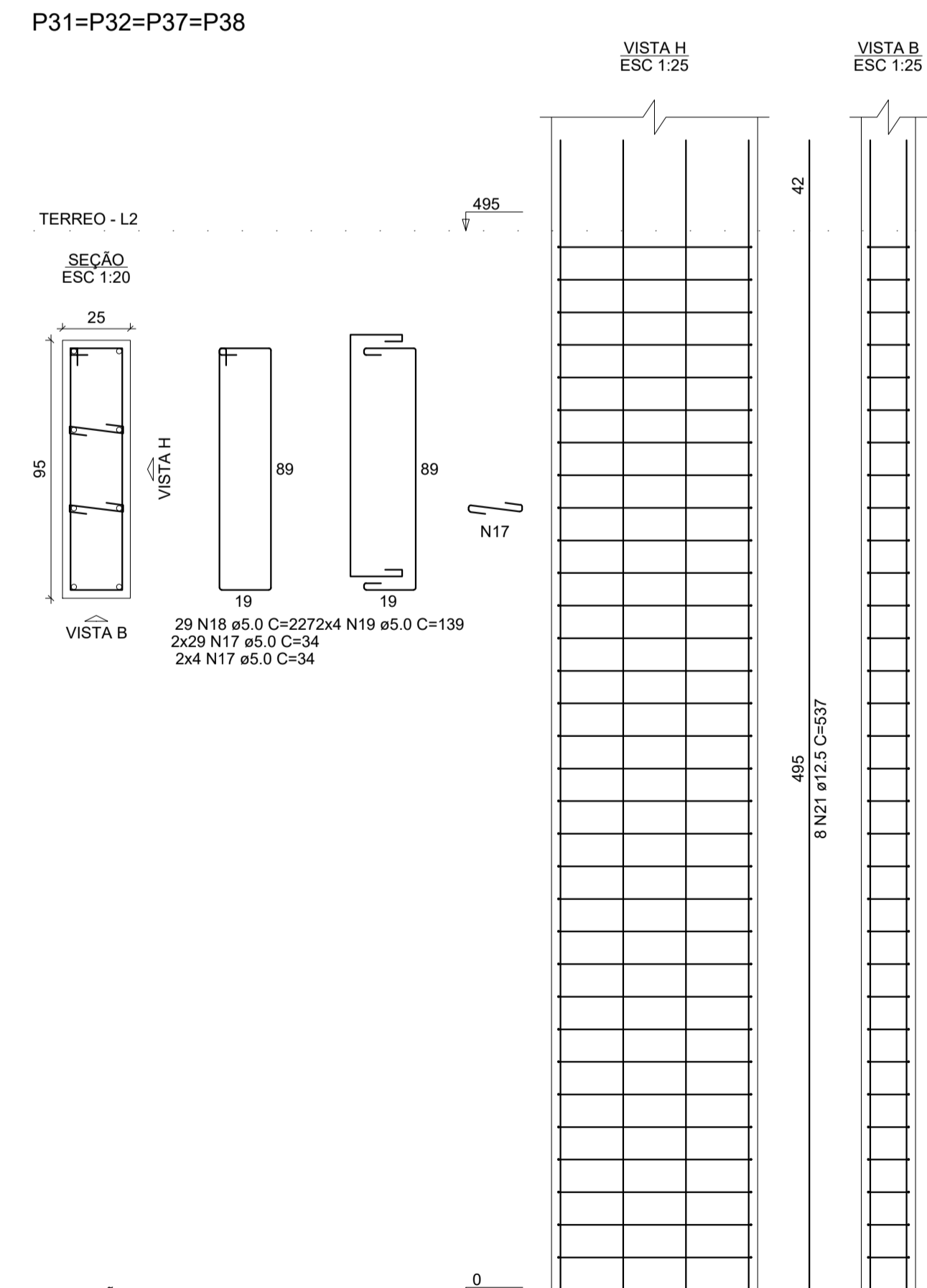
P28=P48=P54



P29=P45



P31=P32=P37=P38



RELAÇÃO DO AÇO

AÇO	N	DIAM (mm)	QUANT	C.UNIT (cm)	C.TOTAL (cm)
3xP10	1	5.0	528	39	20592
2xP22	2	5.0	228	147	33516
2xP29	3	5.0	72	104	7488
	4	5.0	1068	29	30972
	5	5.0	210	217	45570
	6	5.0	96	129	12384
	7	5.0	185	107	19795
	8	5.0	50	74	3700
	9	5.0	68	29	1972
	10	5.0	56	197	11032
	11	5.0	24	119	2856
	12	5.0	102	39	3978
	13	5.0	28	237	6636
	14	5.0	12	149	1788
	15	5.0	74	127	9398
	16	5.0	20	84	1680
	17	5.0	264	34	8976
	18	5.0	116	227	26332
	19	5.0	32	150	4448
	20	10.0	150	528	79200
CA50	21	12.5	54	537	28998

RESUMO DO AÇO

AÇO	DIAM (mm)	C.TOTAL (m)	PESO + 10% (kg)
CA50	10.0	792	537.1
CA60	5.0	2531.1	307.3
			429.1

PESO TOTAL (kg)

CA50	844.4
CA60	429.1

Volume de concreto (C-30) = 20.86 m³  
Área de forma = 240.08 m²



OBRA: NÚCLEO INFANTIL CANTINHO DO CÉU	ÁREA EXISTENTE: 0,00 m²	ÁREA A CONSTRUIR: 1.199,17m²
LOCAL: BOM JESUS DO AMPARO - MG	EQUIPE TÉCNICA: CLAUDIONOR RODRIGUES Eng. Civil CREA - MG 347.119	PROPRIETÁRIO: PREFEITURA MUNICIPAL DE BOM JESUS DO AMPARO-MG CNPJ: 18.317.693/0001-06
PROPRIETÁRIO: PREFEITURA MUNICIPAL DE BOM JESUS DO AMPARO-MG CNPJ: 18.317.693/0001-06	RESP. TÉCNICO - ENGENHEIRO CIVIL: CLAUDIONOR RODRIGUES (STONE) CREA -MG 347/119	CONTEÚDO: PILARES TERREO
ESCALA: INDICADA	DESENHISTA: STONE	PROJETO: PROJETO ESTRUTURAL
DATA: FEV/2023	FOLHA: 40/ 66	

DIREITOS AUTORAIS RESERVADOS. PROIBIDA A REPRODUÇÃO TOTAL OU PARCIAL.