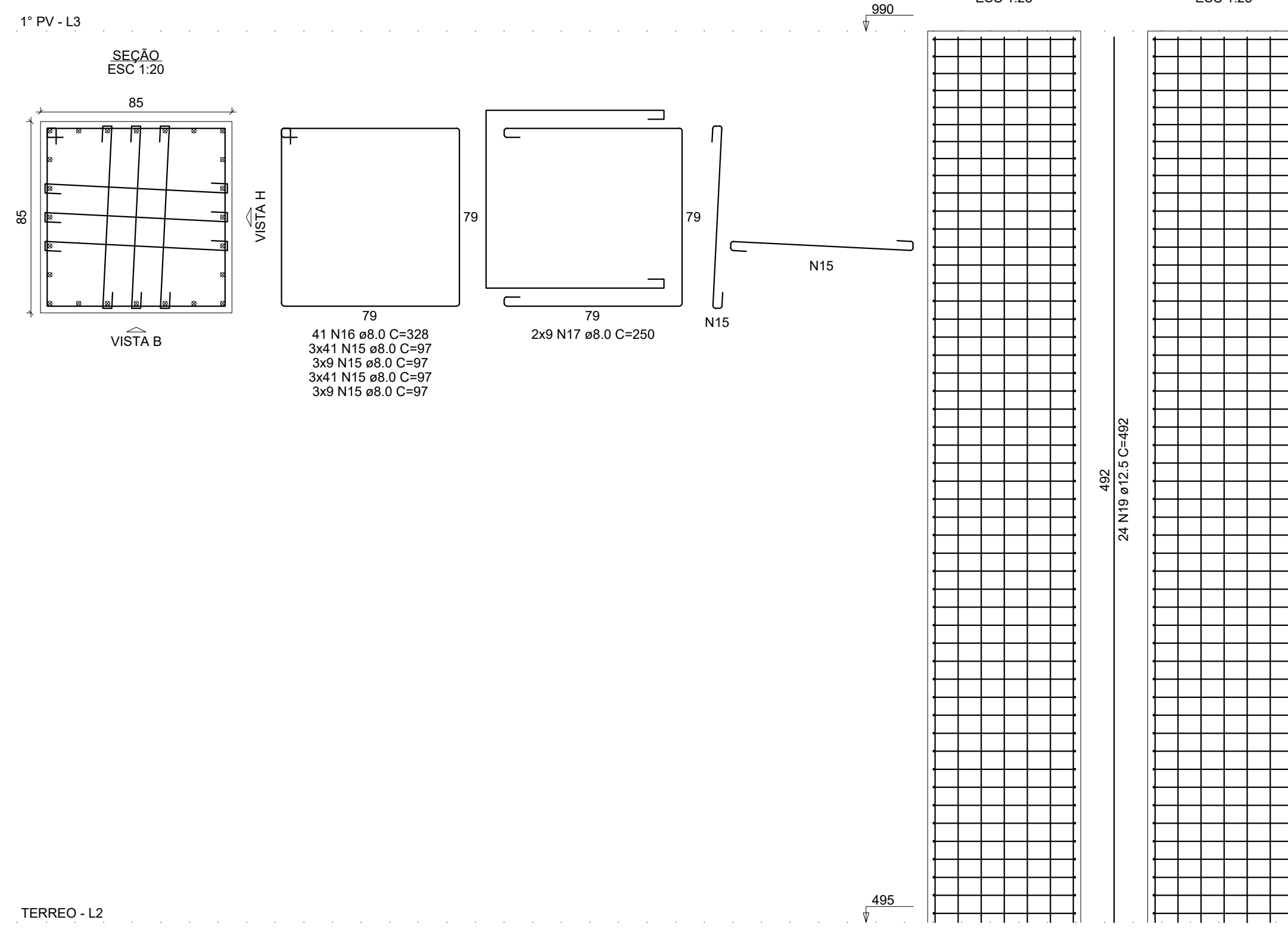
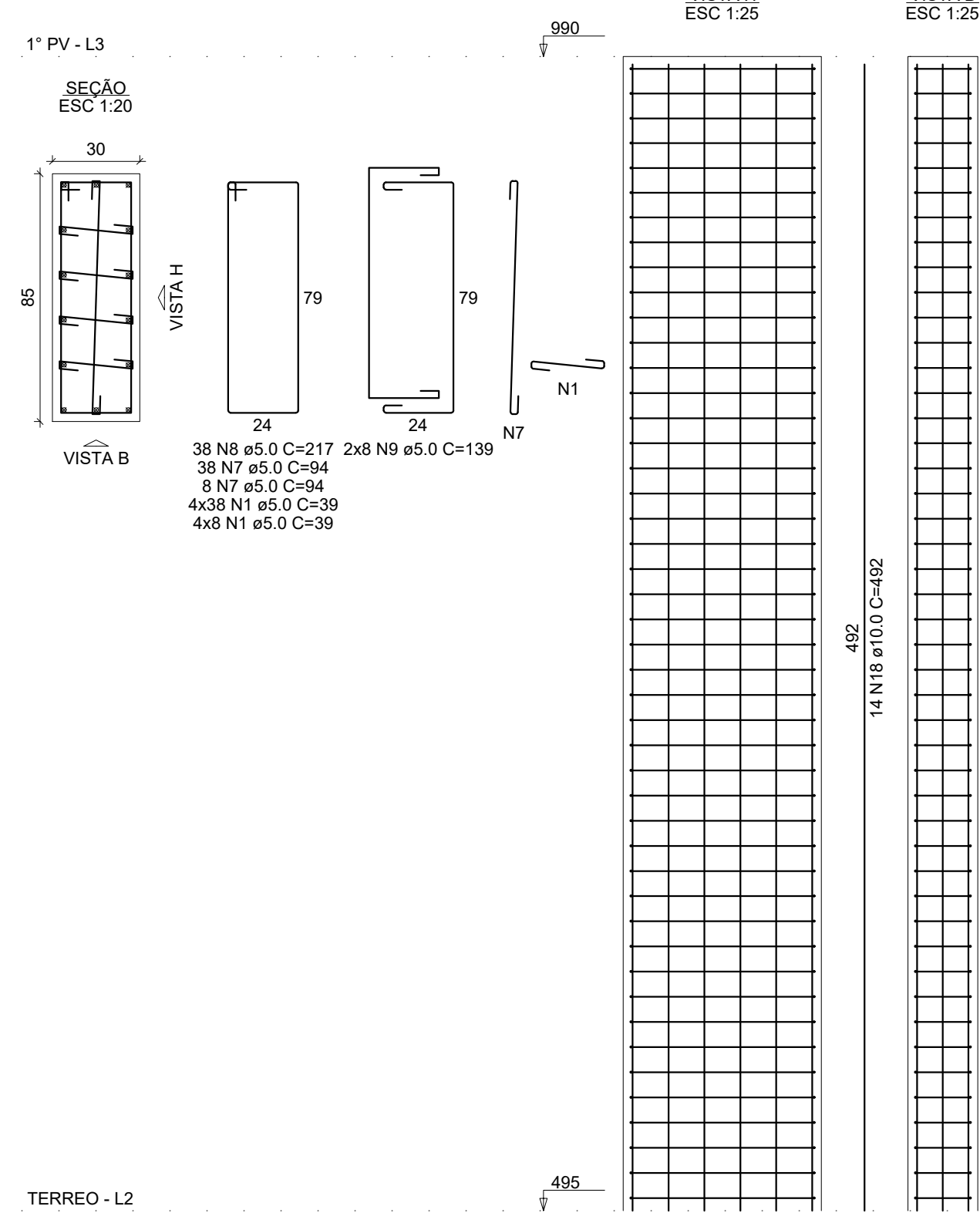


P1=P2=P8=P46=P51=P57=P59



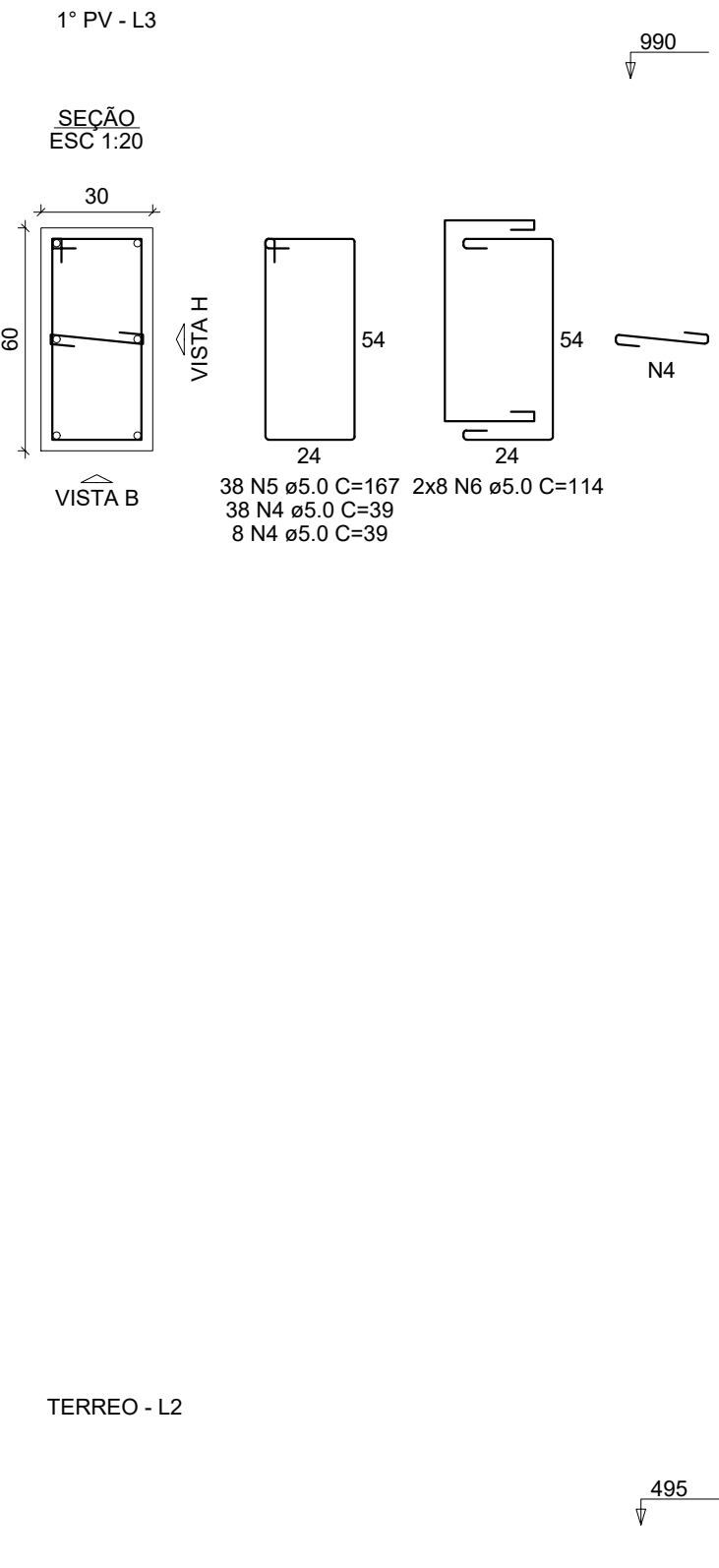
TERREO - L2

P6=P49=P55



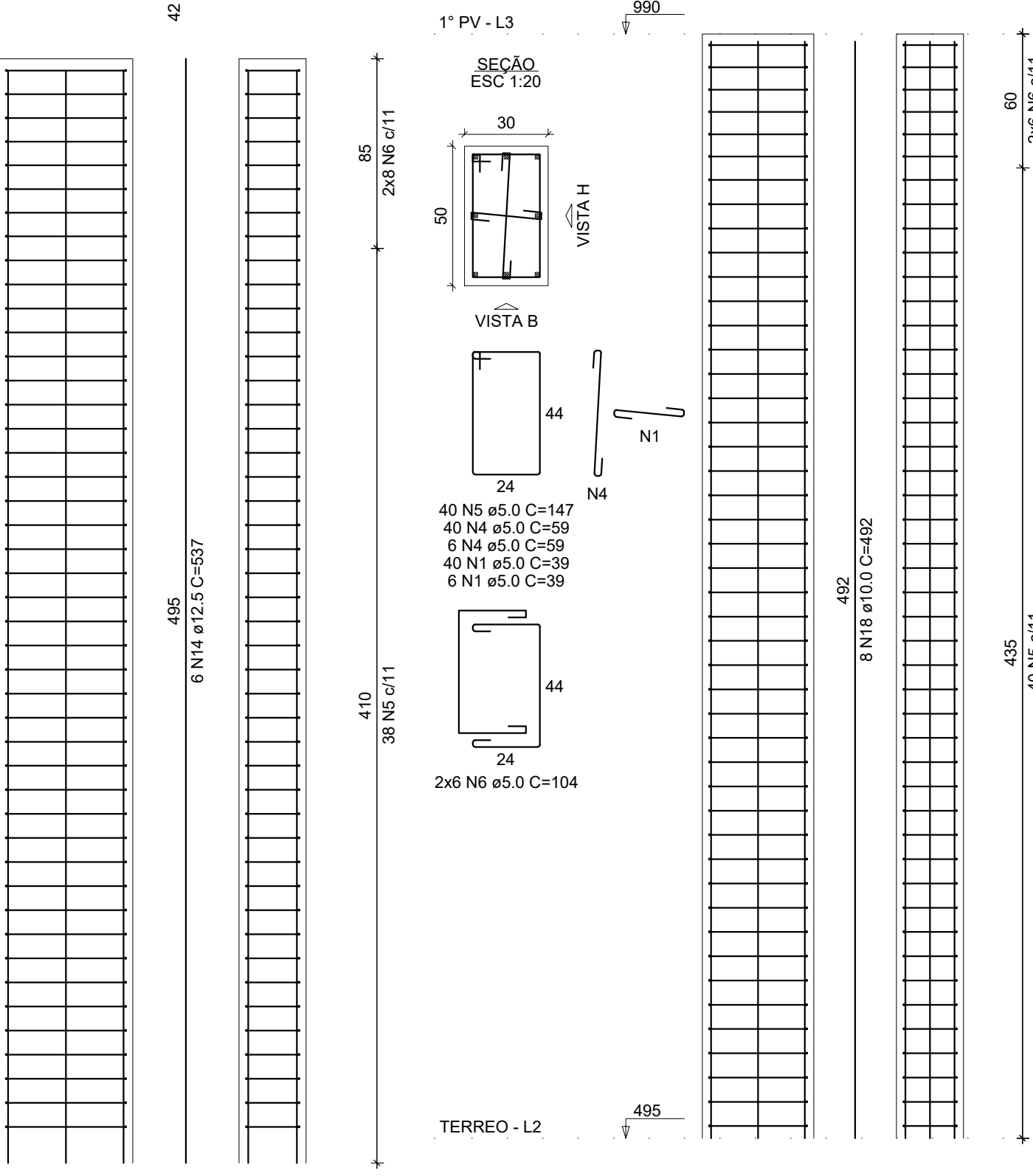
TERREO - L2

P3



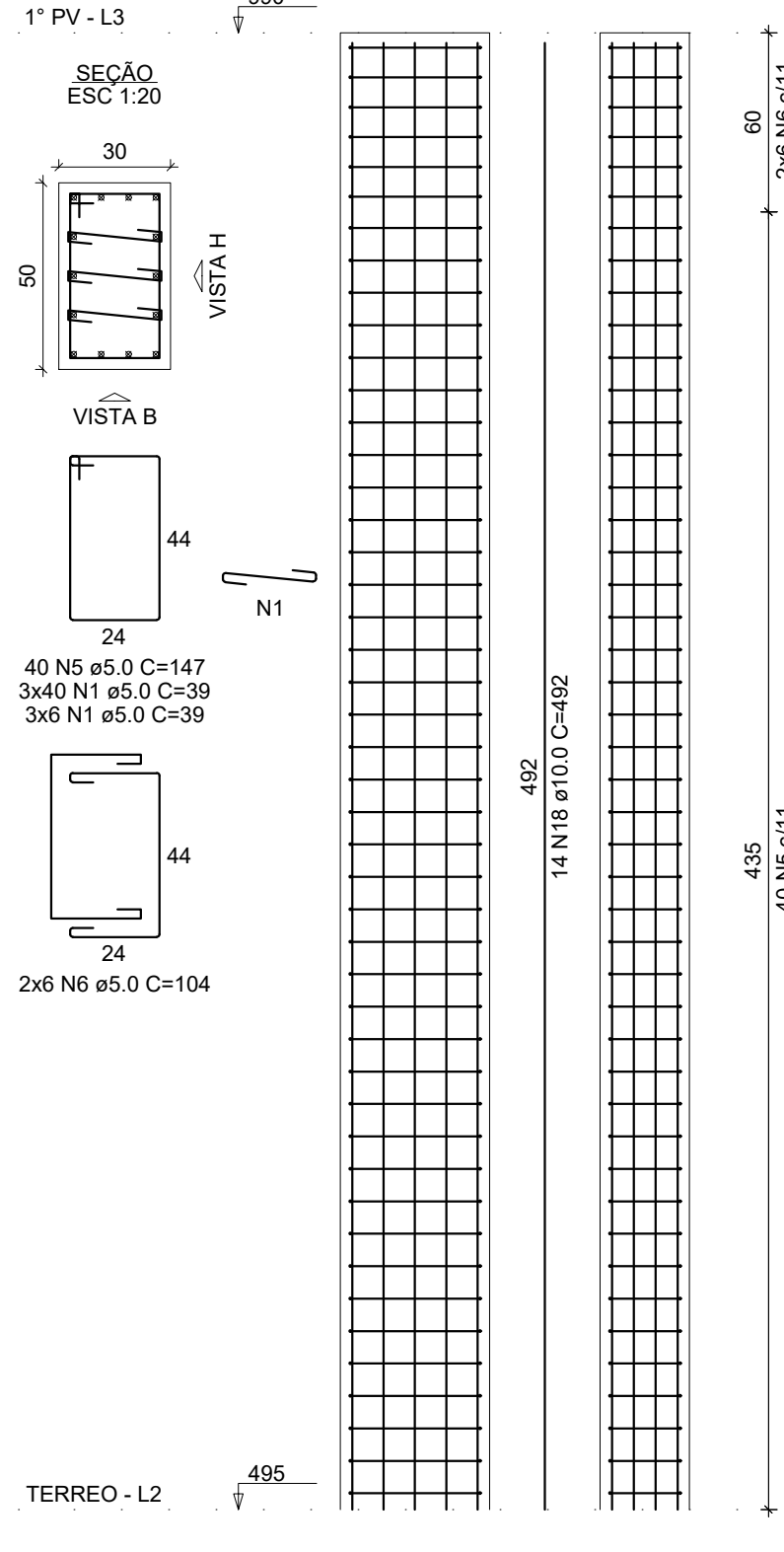
TERREO - L2

P4



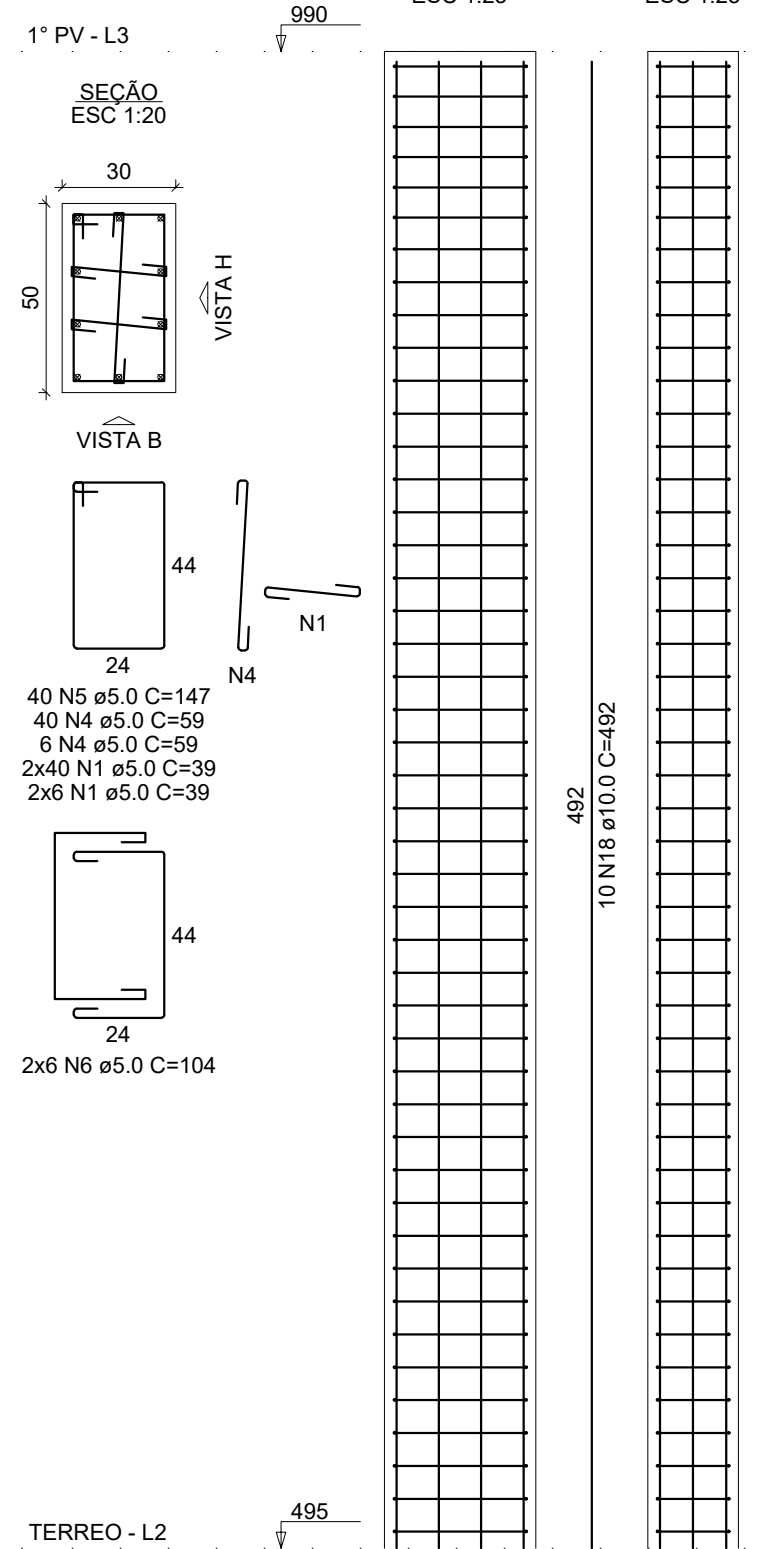
TERREO - L2

P9



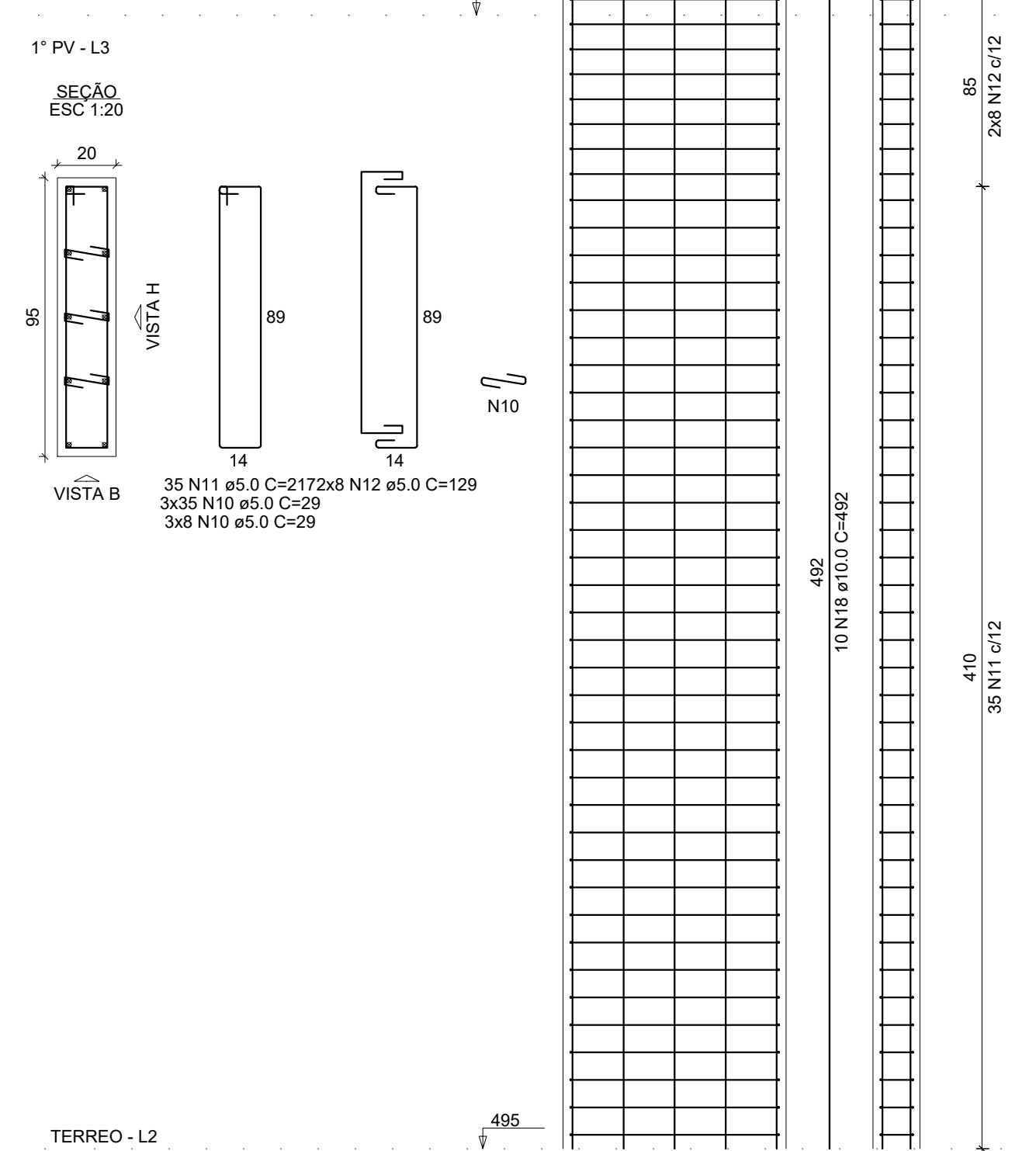
TERREO - L2

P10



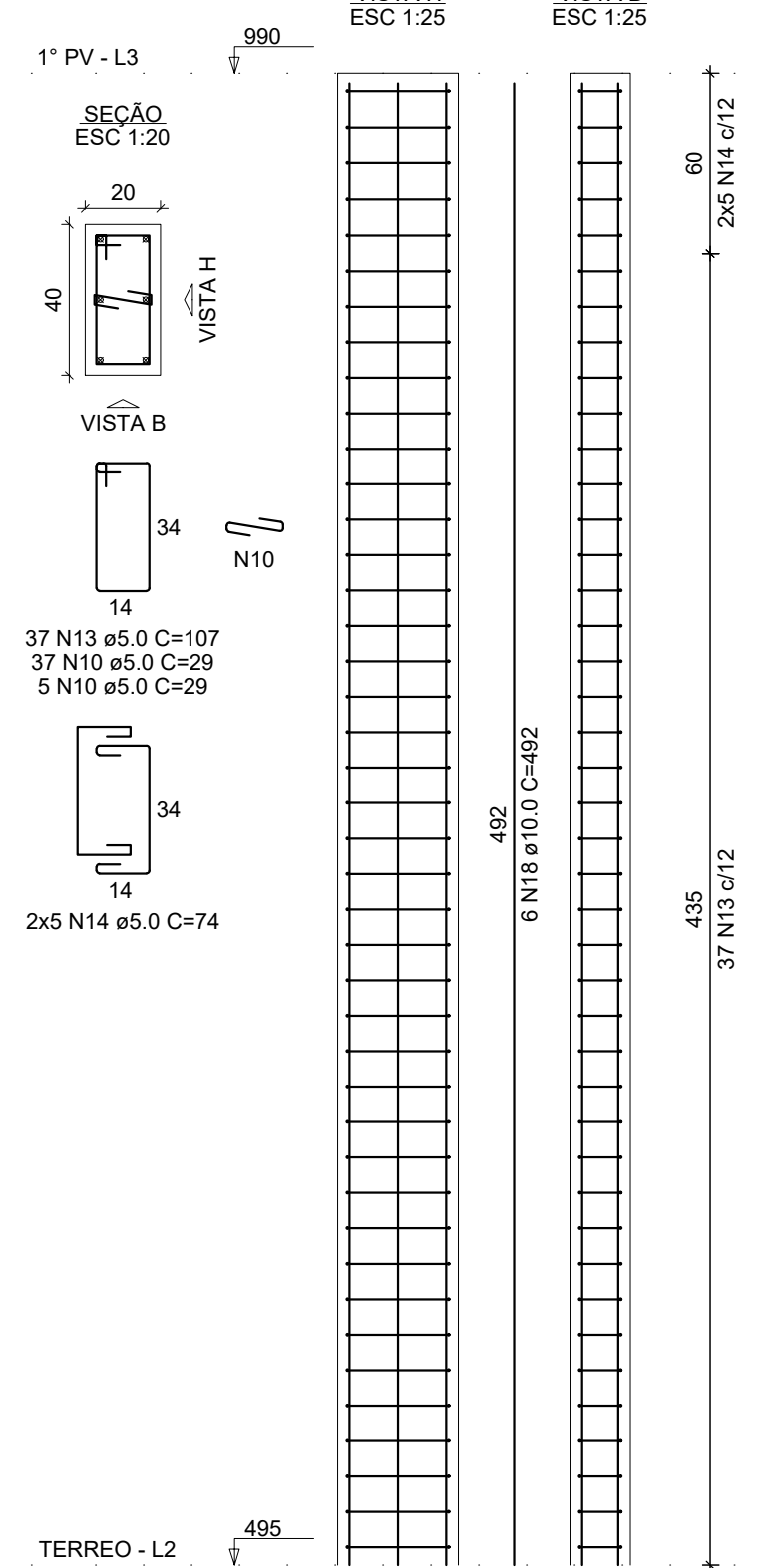
TERREO - L2

P11=P12=P15=P18=P21



TERREO - L2

P13=P14=P19=P20



TERREO - L2

RELAÇÃO DO AÇO

AÇO	N	DIAM (mm)	QUANT	C.UNIT (cm)	C.TOTAL (cm)
CA60	1	5.0	1150	39	44850
	2	5.0	40	167	6680
	3	5.0	12	114	1368
	4	5.0	92	59	5428
	5	5.0	120	147	17640
	6	5.0	36	104	3744
	7	5.0	138	94	12972
	8	5.0	114	217	24738
	9	5.0	48	139	6672
	10	5.0	813	29	23577
	11	5.0	175	217	37975
	12	5.0	80	129	10320
	13	5.0	148	107	15836
	14	5.0	40	74	2960
	15	8.0	2100	97	203700
	16	8.0	287	328	94136
	17	8.0	126	250	31500
	18	10.0	170	492	83640
	19	12.5	168	492	82656

RESUMO DO AÇO

AÇO	DIAM (mm)	C.TOTAL (m)	PESO + 10% (kg)
CA50	8.0	3293.4	1429.5
	10.0	836.4	567.2
	12.5	826.6	875.9
	5.0	2147.6	364.1
PESO TOTAL (kg)			
CA50		2872.6	
CA60		364.1	

Volume de concreto (C-30) = 38.23 m³  
Área de forma = 265.32 m²

**CONSTRUTORA STONE** CONSTRUTORA STONE ODPJ: 25.941.063/0001-11  
*Tudo pelo gol do cliente!*

OBRA: NÚCLEO INFANTIL CANTINHO DO CÉU

ÁREA EXISTENTE: 0,00 m²

ÁREA A CONSTRUIR: 1.199,17 m²

LOCAL: BOM JESUS DO AMPARO - MG

EQUIPE TÉCNICA: CLAUDIONOR RODRIGUES (CREA-MG 347/119)

PROPRIETÁRIO: PREFEITURA MUNICIPAL DE BOM JESUS DO AMPARO-MG (CNPJ: 18.317.693/0001-06)

RESP. TÉCNICO - ENGENHEIRO CIVIL: CLAUDIONOR RODRIGUES (STONE) CREA-MG 347/119

CONTEÚDO: PILARES 1º PV

PROJETO: PROJETO ESTRUTURAL

ESCALA: INDICADA

DESENHISTA: STONE

DATA: FEV/2023

FOLHA: 52/66

DIREITOS AUTORAIS RESERVADOS. PROIBIDA A REPRODUÇÃO TOTAL OU PARCIAL.