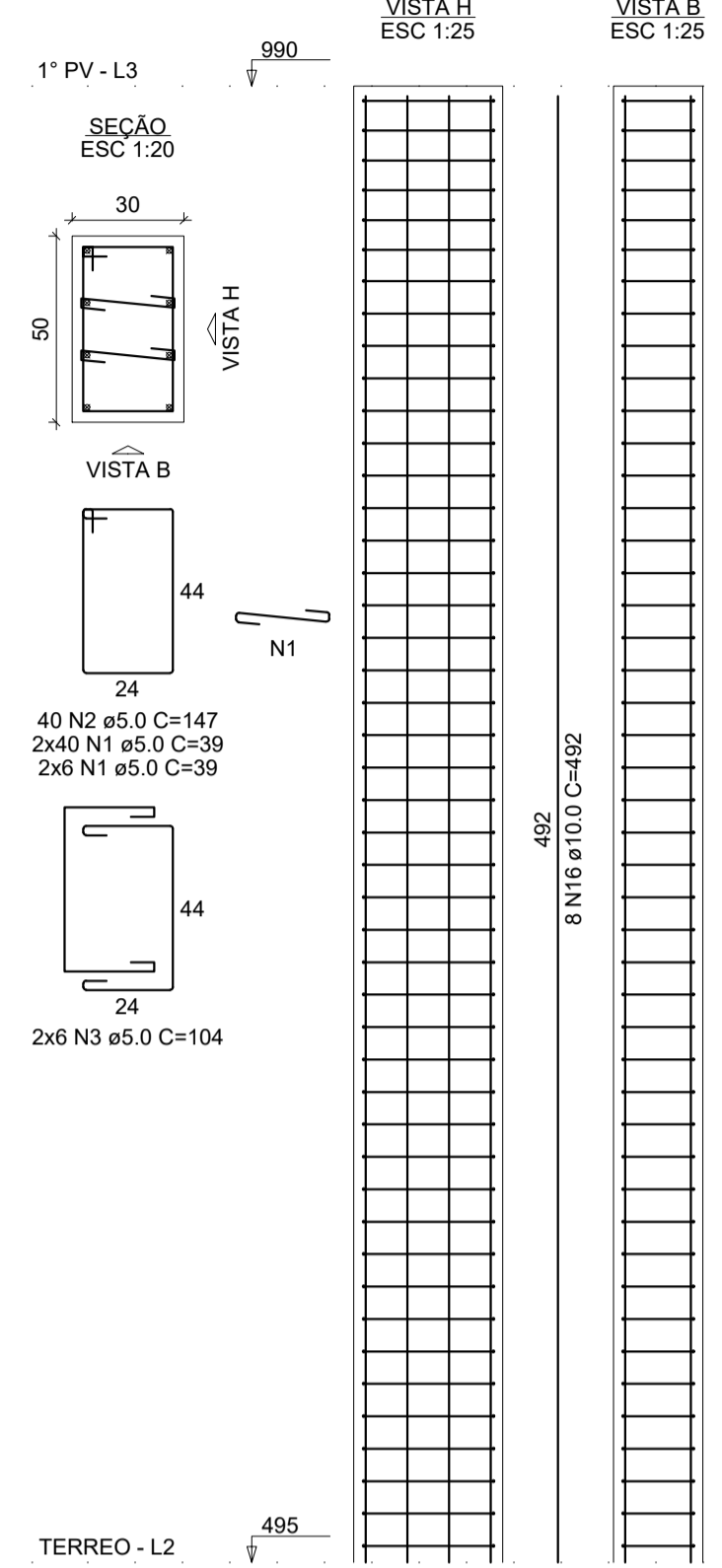
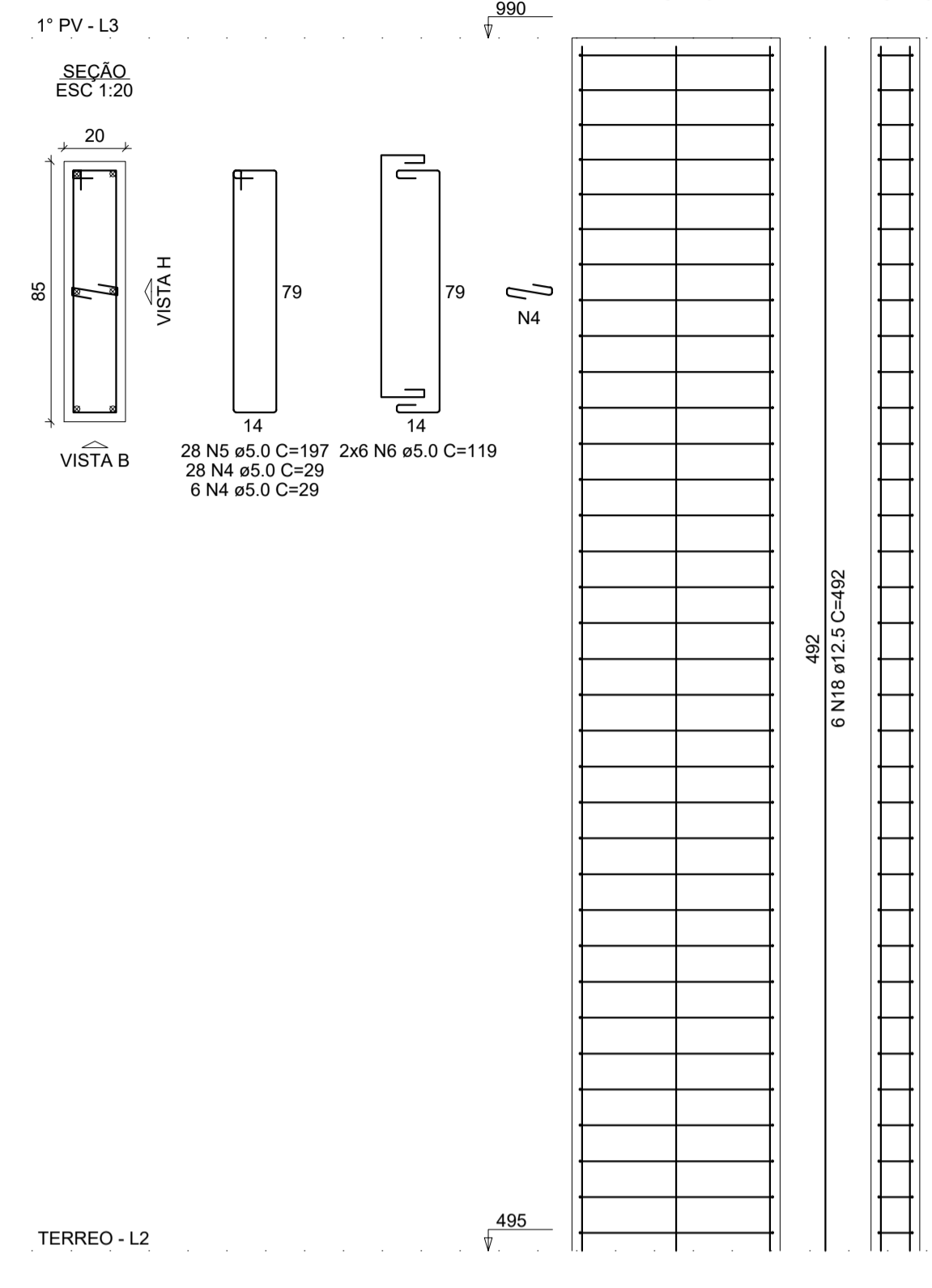


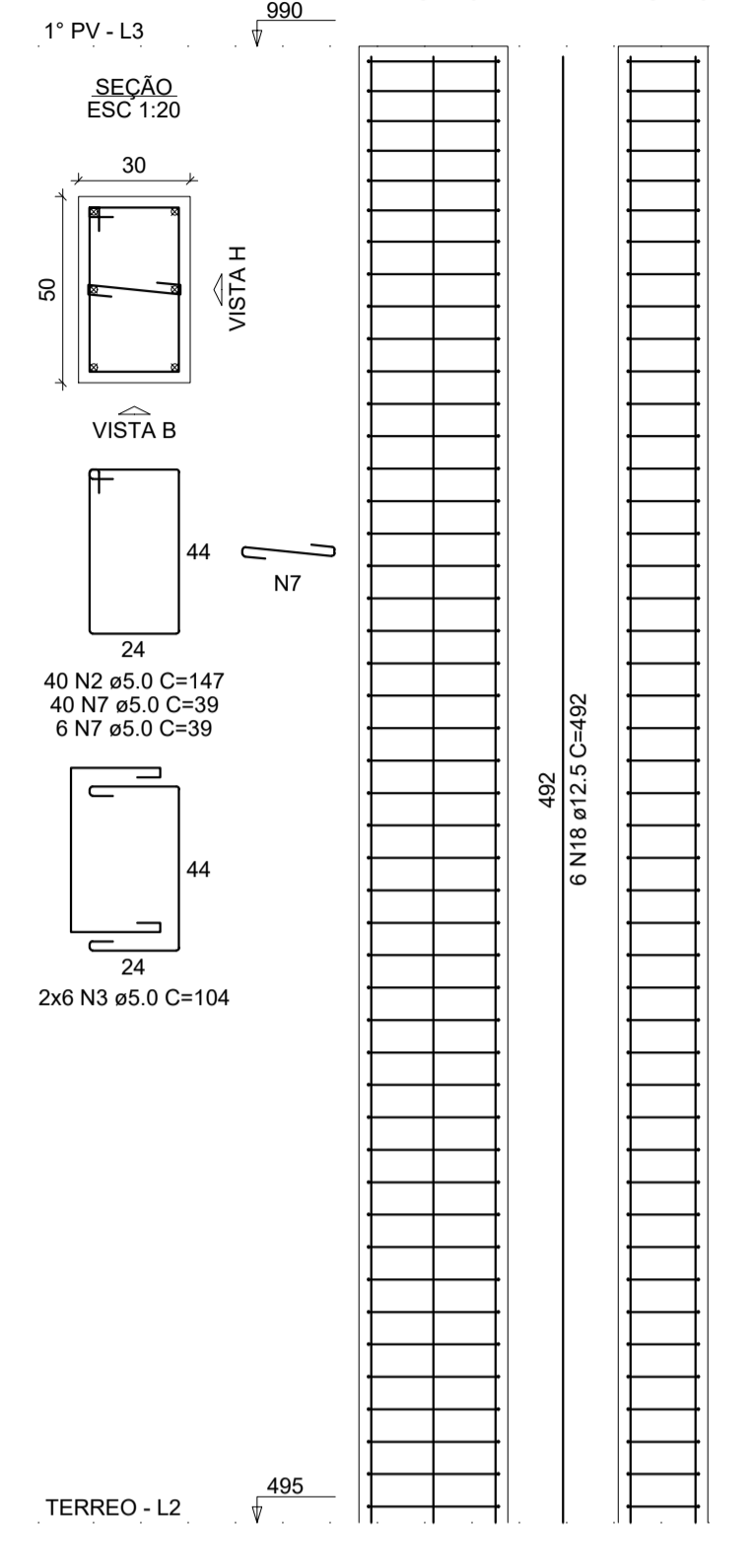
P16=P17=P54



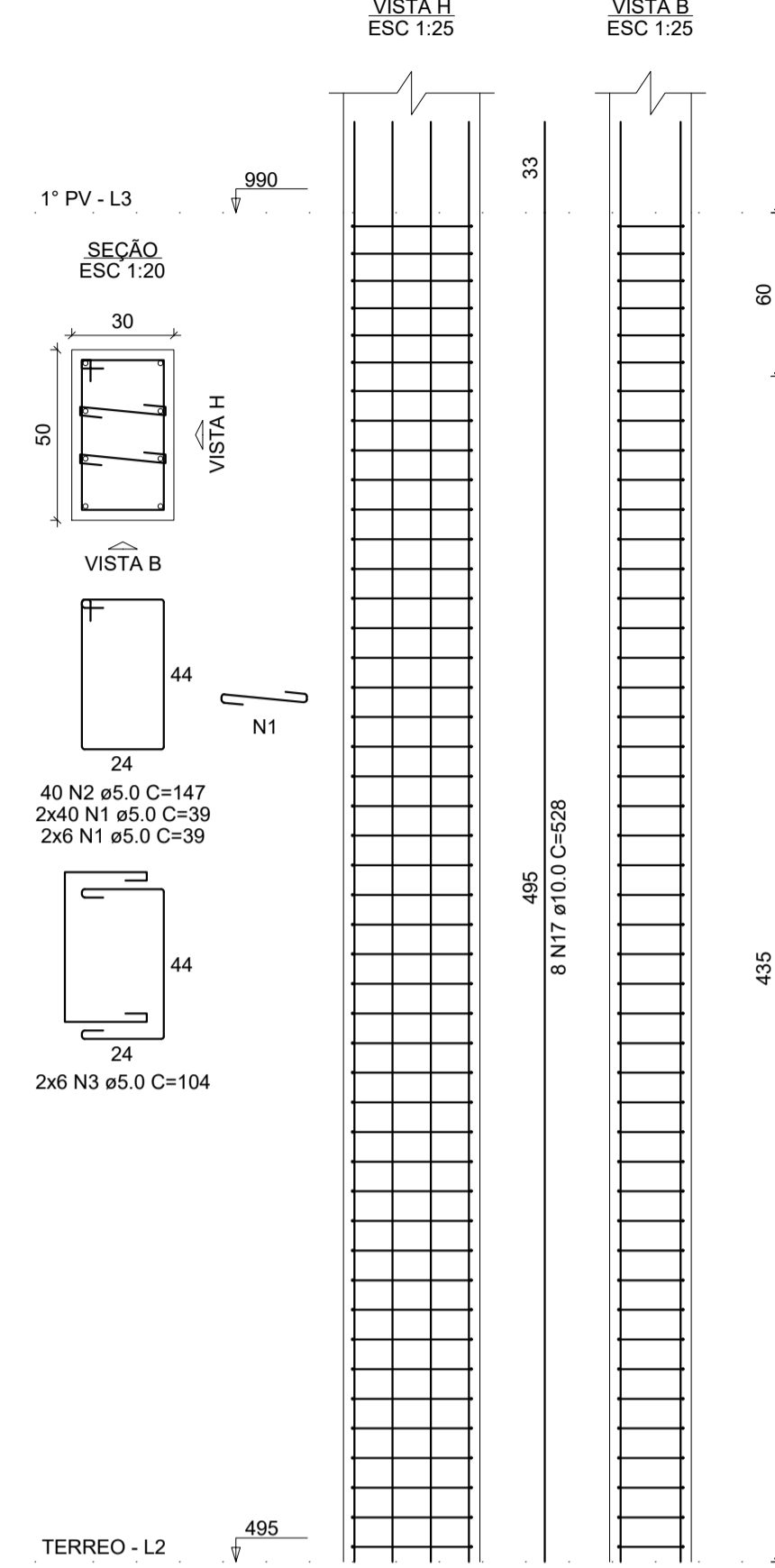
P22=P41



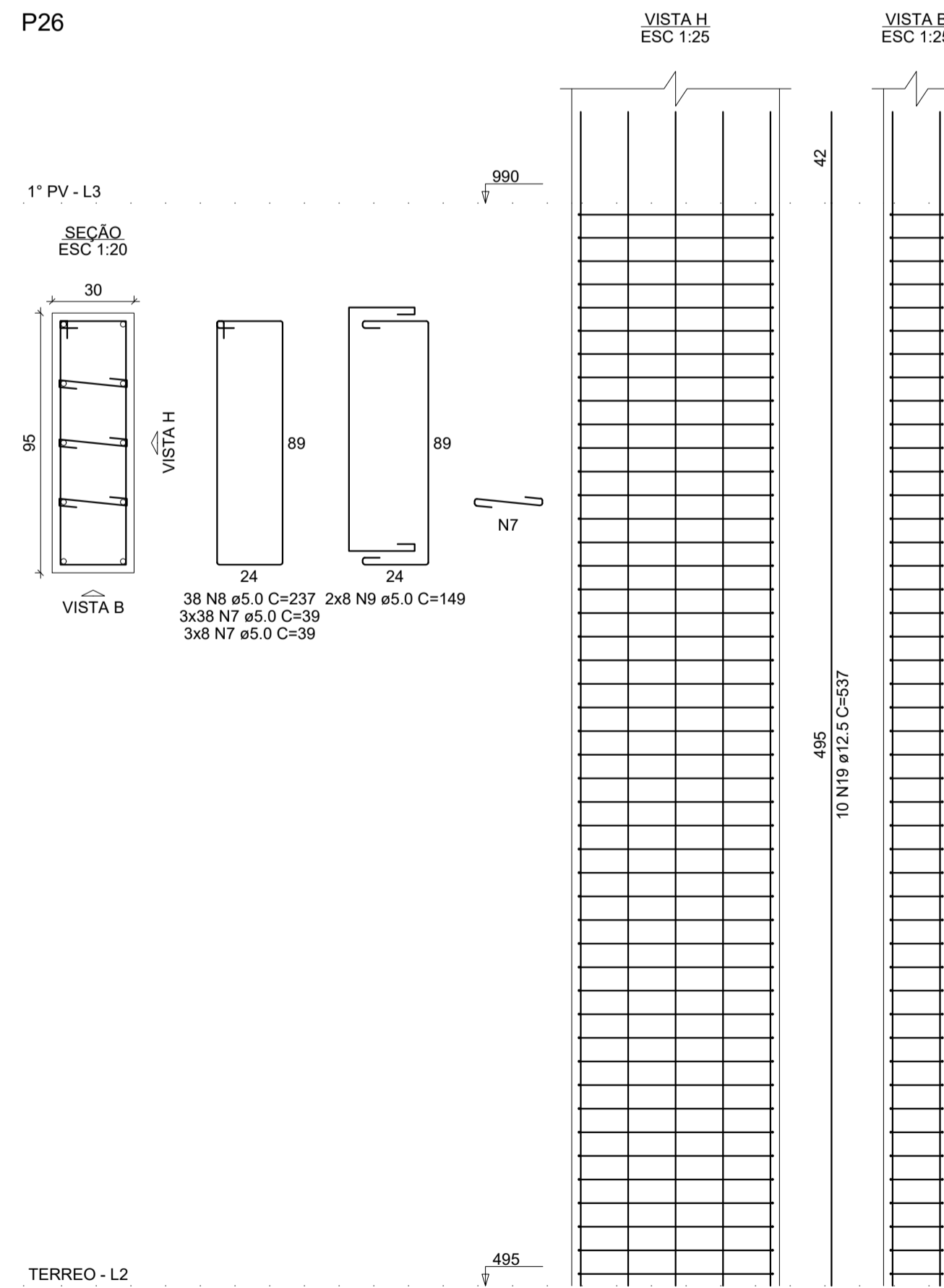
P23=P36



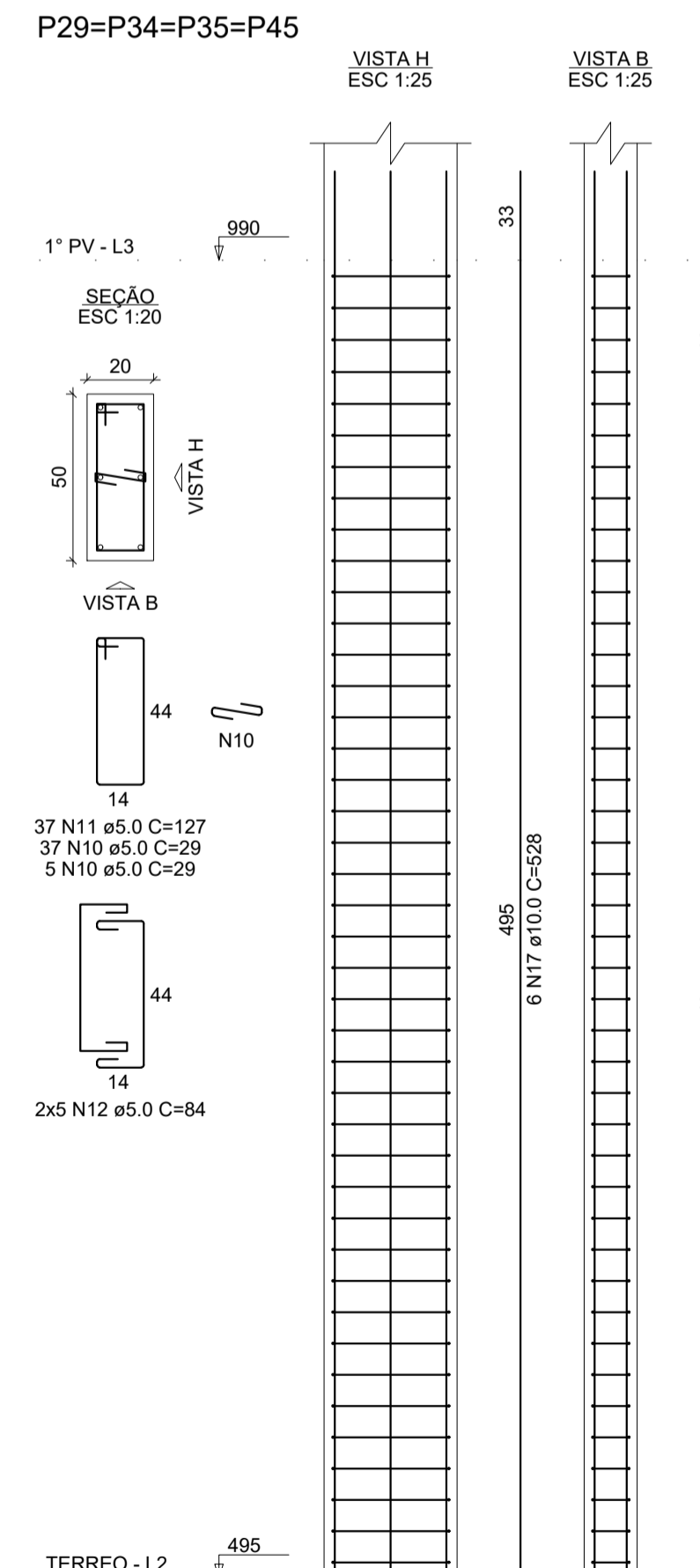
P24=P25=P27=P28



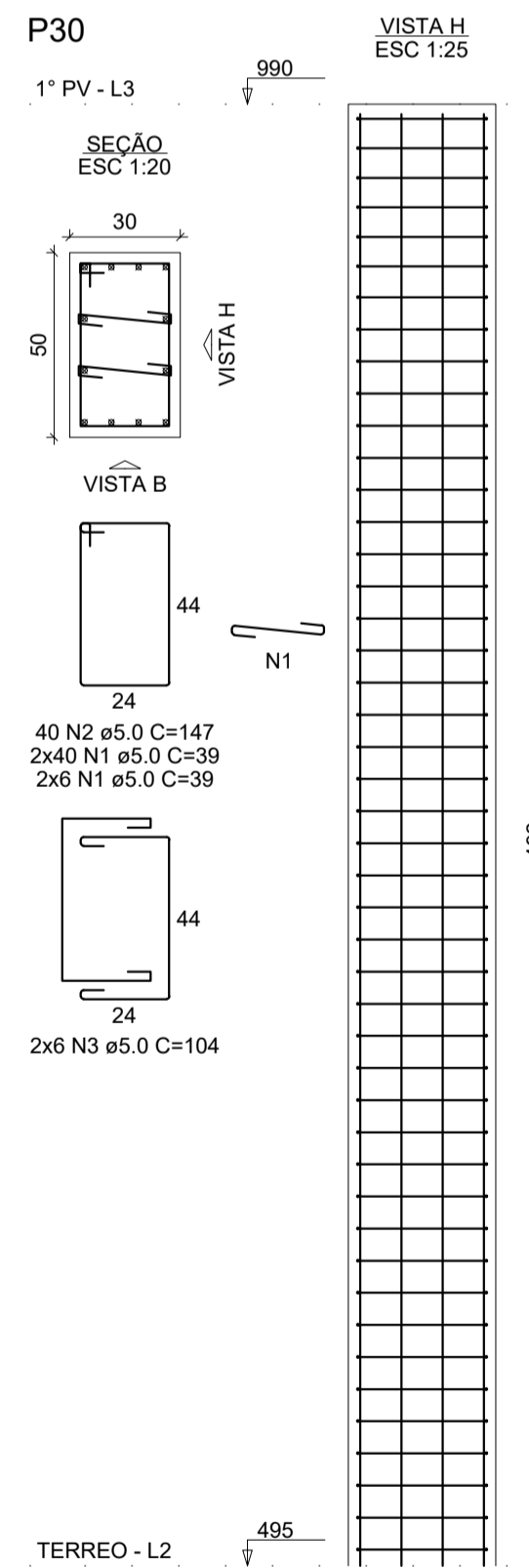
P26



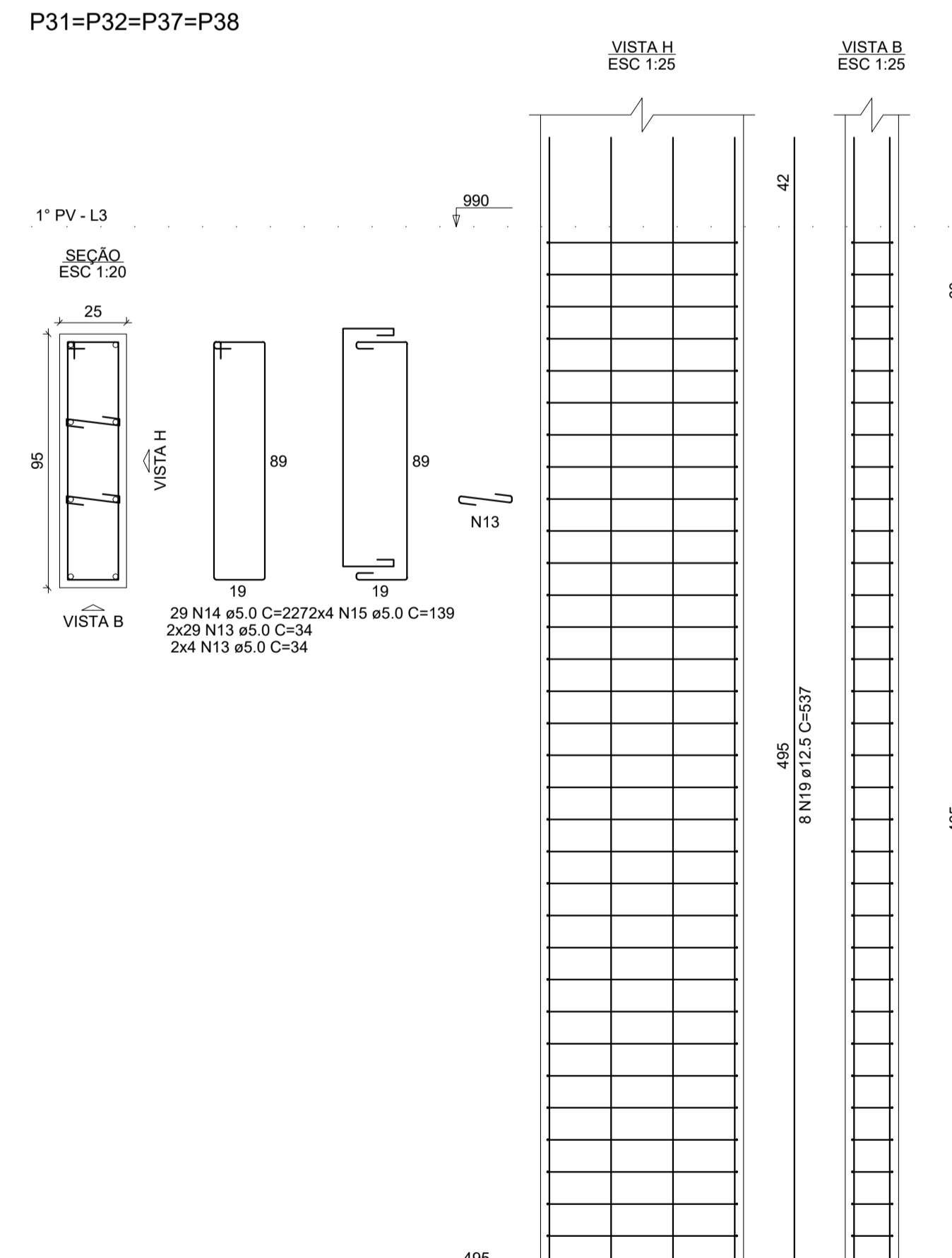
P29=P34=P35=P45



P30



P31=P32=P37=P38



RELAÇÃO DO AÇO

AÇO	N	DIAM (mm)	QUANT	C.UNIT (cm)	C.TOTAL (cm)
CA60	1	5.0	736	39	28704
	2	5.0	400	147	58800
	3	5.0	120	104	12480
	4	5.0	68	29	1972
	5	5.0	56	197	11032
	6	5.0	24	119	2856
	7	5.0	230	39	8970
	8	5.0	38	237	9006
	9	5.0	16	149	2384
	10	5.0	168	29	4872
	11	5.0	148	127	18796
	12	5.0	40	84	3360
	13	5.0	264	34	8976
	14	5.0	116	227	26332
	15	5.0	32	139	4448
	16	10.0	36	492	17712
	17	10.0	56	528	29568
	18	12.5	24	492	11808
	19	12.5	42	537	22554

RESUMO DO AÇO

AÇO	DIAM (mm)	C.TOTAL (m)	PESO + 10% (Kg)
CA50	10.0	472.8	320.6
CA60	12.5	343.6	364.1
CA60	5.0	2029.9	344.2

PESO TOTAL (Kg)
 CA50 684.8
 CA60 344.2

Volume de concreto (C-30) = 17.20 m³
 Área de forma = 187.61 m²



OBRA: NÚCLEO INFANTIL CANTINHO DO CÉU	ÁREA EXISTENTE: 0,00 m²	ÁREA A CONSTRUIR: 1.199,17m²
LOCAL: BOM JESUS DO AMPARO - MG	EQUIPE TÉCNICA: CLAUDIONOR RODRIGUES CREA - MG 347.119	
PROPRIETÁRIO: PREFEITURA MUNICIPAL DE BOM JESUS DO AMPARO-MG CNPJ: 18.317.693/0001-06	RESP. TÉCNICO - ENGENHEIRO CIVIL: CLAUDIONOR RODRIGUES (STONE) CREA -MG 347/119	
CONTEÚDO: PILARES 1º PV	PROJETO: PROJETO ESTRUTURAL	
ESCALA: INDICADA	DESENHISTA: STONE	DATA: FEV/2023
		FOLHA: 53/ 66

DIREITOS AUTORAIS RESERVADOS. PROIBIDA A REPRODUÇÃO TOTAL OU PARCIAL.